

ROTTERDAM/Rotterdam
STANDARD ARRIVAL CHART - INSTRUMENT

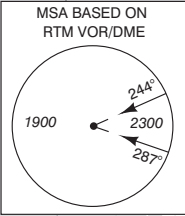
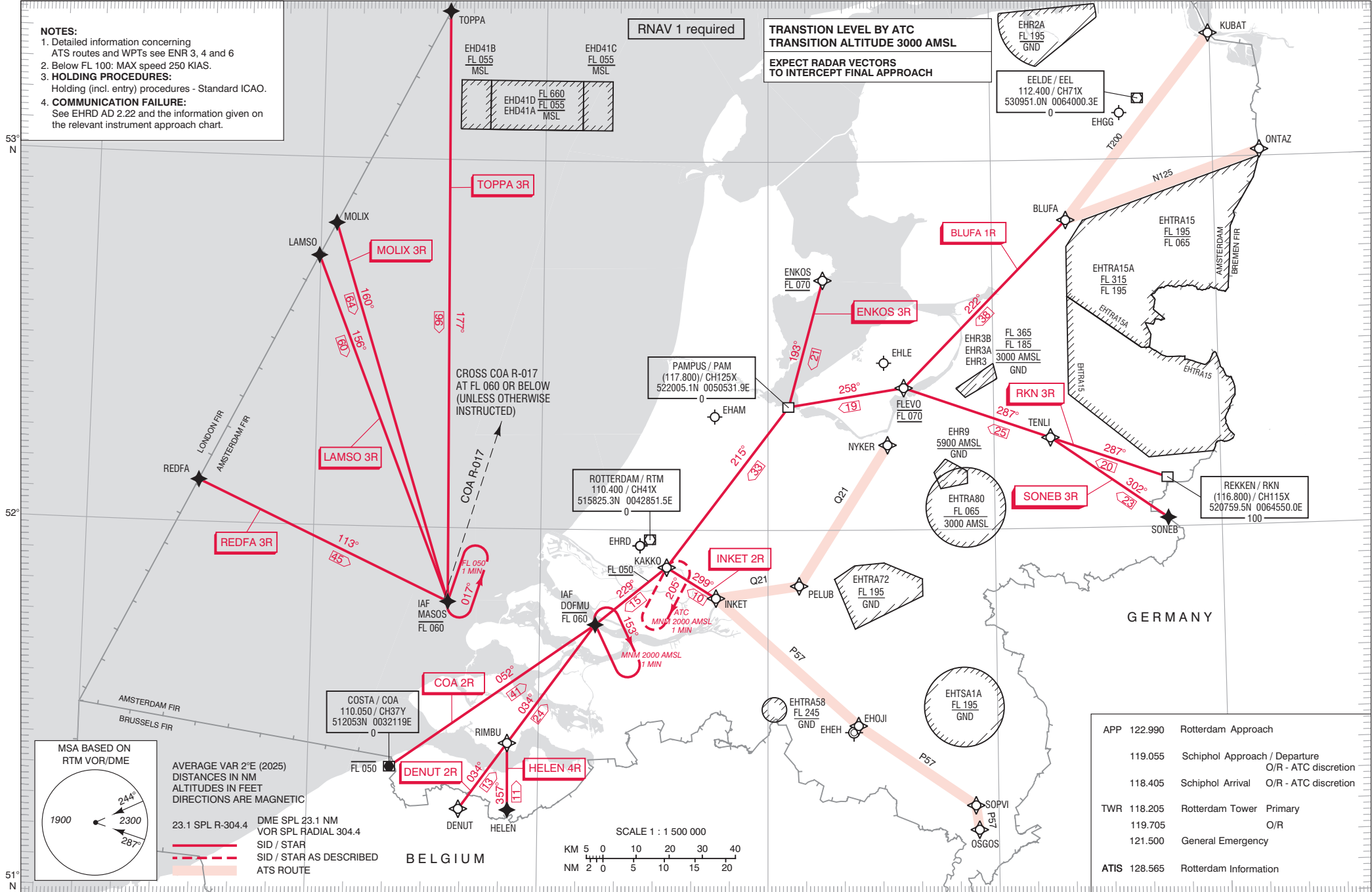
NOTES:

- Detailed information concerning ATS routes and WPTs see ENR 3, 4 and 6
- Below FL 100: MAX speed 250 KIAS.
- HOLDING PROCEDURES:**
Holding (incl. entry) procedures - Standard ICAO.
- COMMUNICATION FAILURE:**
See EHRD AD 2.22 and the information given on the relevant instrument approach chart.

RNAV 1 required

TRANSITION LEVEL BY ATC
TRANSITION ALTITUDE 3000 AMSL

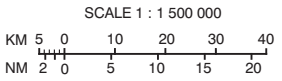
EXPECT RADAR VECTORS
TO INTERCEPT FINAL APPROACH



AVERAGE VAR 2°E (2025)
DISTANCES IN NM
ALTITUDES IN FEET
DIRECTIONS ARE MAGNETIC

23.1 SPL R-304.4
DME SPL 23.1 NM
VOR SPL RADIAL 304.4

— SID / STAR
- - - SID / STAR AS DESCRIBED
- - - - - ATS ROUTE



APP 122.990	Rotterdam Approach
119.055	Schiphol Approach / Departure O/R - ATC discretion
118.405	Schiphol Arrival O/R - ATC discretion
TWR 118.205	Rotterdam Tower Primary
119.705	O/R
121.500	General Emergency
ATIS 128.565	Rotterdam Information

CHANGE 0326: MAGVAR 2025; editorial.