

ROTTERDAM/Rotterdam
STANDARD DEPARTURE CHART - INSTRUMENT

Detailed information concerning ATS routes and WPTs see ENR 3, 4 and 6.
For ATS route restrictions see AD 2.22 paragraph 1.4.3.

TRANSITION ALTITUDE 3000 AMSL
MAX 250 KIAS below FL 100
unless otherwise instructed

EHD41B	FL 055	MSL
EHD41D	FL 660	
EHD41A	FL 055	MSL
EHD41C	FL 055	MSL

EELDE / EEL
112.400 / CH71X
530951.0N 0064000.3E

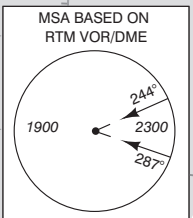
SCHIPHOL / SPL
108.400 / CH21X
521955.7N 0044459.6E

PAMPUS / PAM
(117.800) / CH125X
522005.1N 0050531.9E

ROTTERDAM / RTM
110.400 / CH41X
515825.3N 0042851.5E

COSTA / COA
110.050 / CH37Y
512053N 0032119E

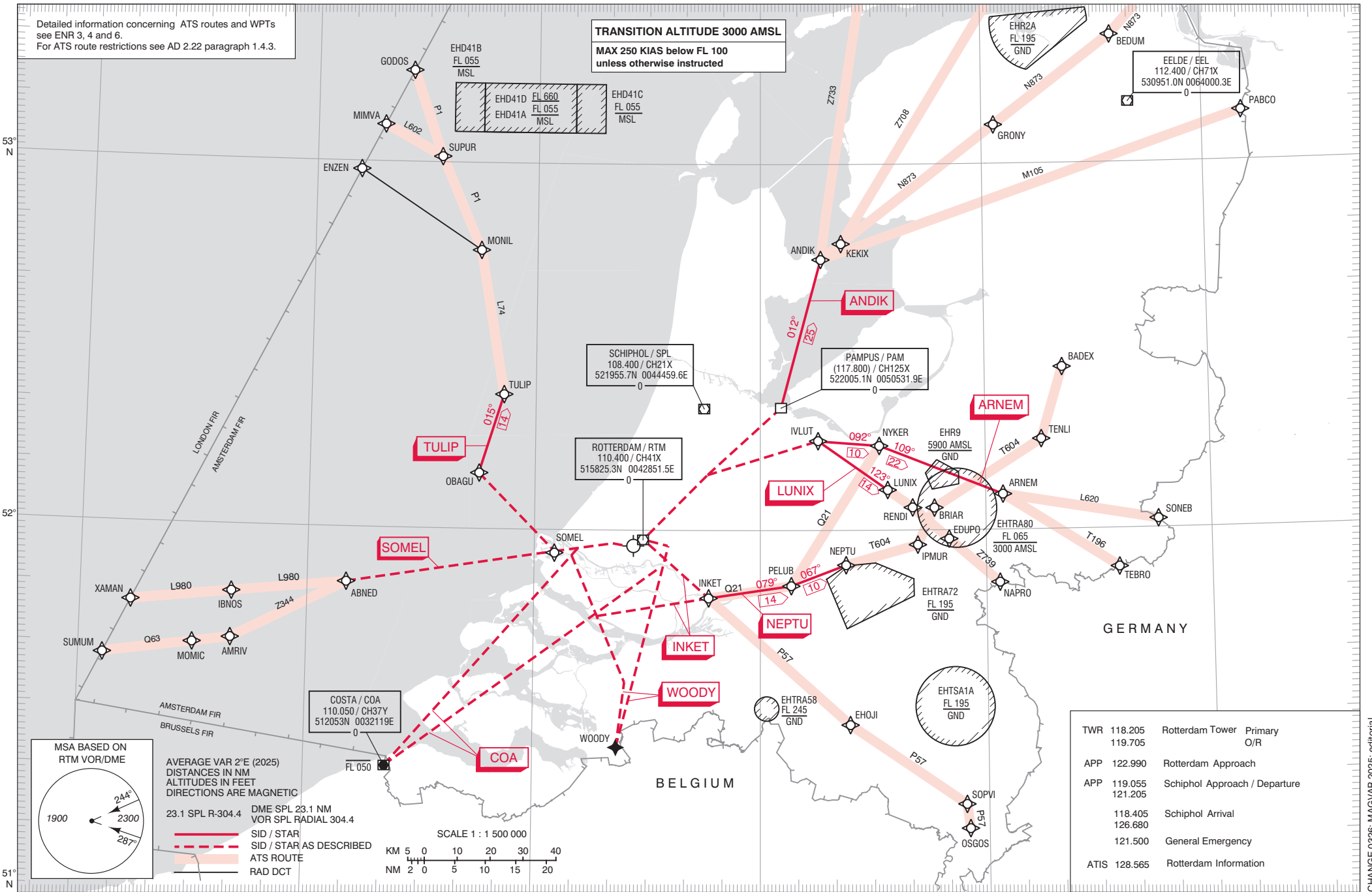
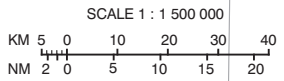
TWR	118.205	Rotterdam Tower	Primary
	119.705		O/R
APP	122.990	Rotterdam Approach	
APP	119.055	Schiphol Approach / Departure	
	121.205		
	118.405	Schiphol Arrival	
	126.680		
	121.500	General Emergency	
ATIS	128.565	Rotterdam Information	



AVERAGE VAR 2°E (2025)
DISTANCES IN NM
ALTITUDES IN FEET
DIRECTIONS ARE MAGNETIC

23.1 SPL R-304.4 DME SPL 23.1 NM
VOR SPL RADIAL 304.4

— SID / STAR
- - - SID / STAR AS DESCRIBED
— ATS ROUTE
- - - RAD DCT



CHANGE 0326: MAGVAR 2025; editorial.