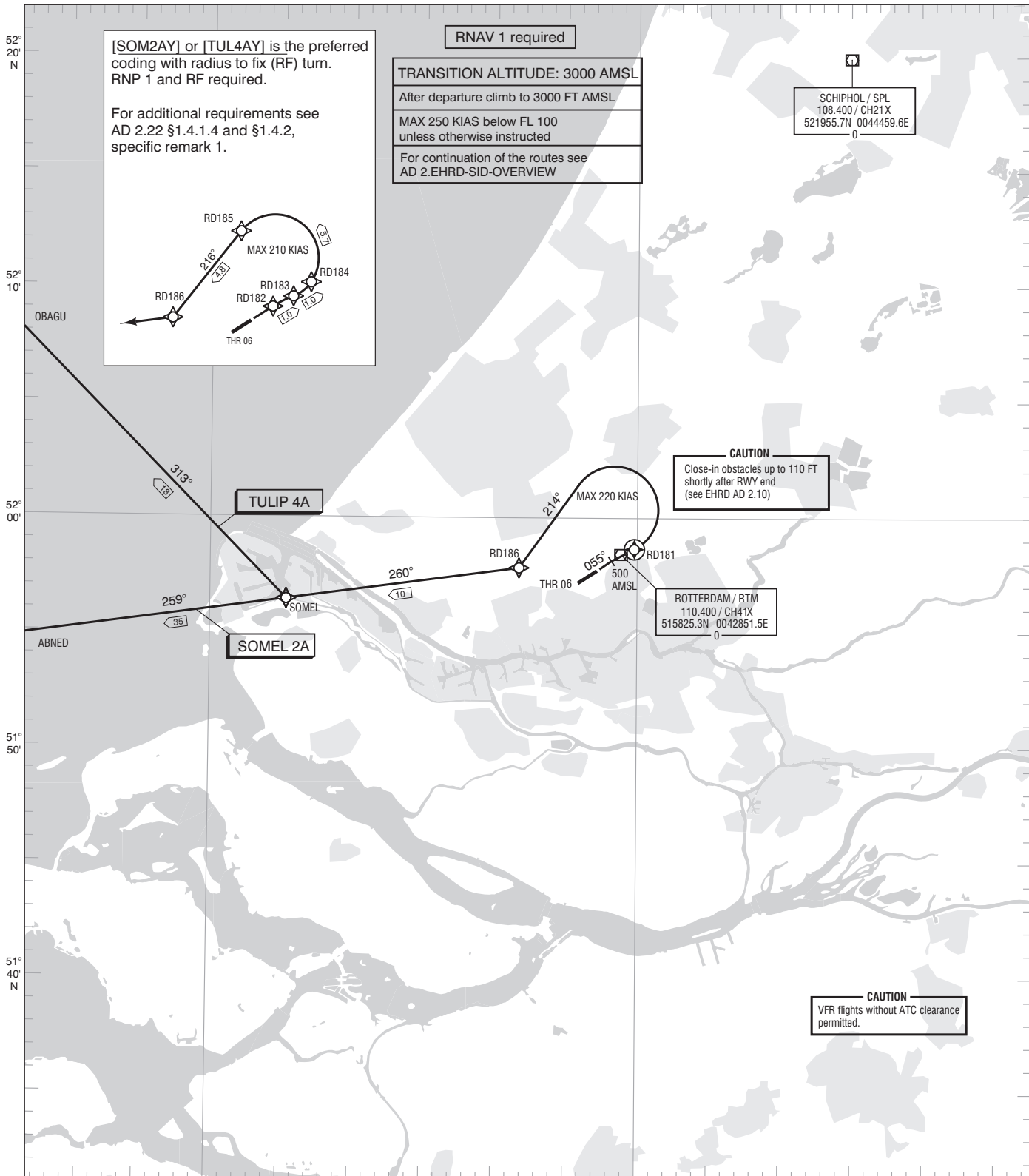


AIP NETHERLANDS



[SOM2AY] or [TUL4AY] is the preferred coding with radius to fix (RF) turn. RNP 1 and RF required.

For additional requirements see AD 2.22 §1.4.1.4 and §1.4.2, specific remark 1.

RNAV 1 required

TRANSITION ALTITUDE: 3000 FT AMSL

After departure climb to 3000 FT AMSL

MAX 250 KIAS below FL 100 unless otherwise instructed

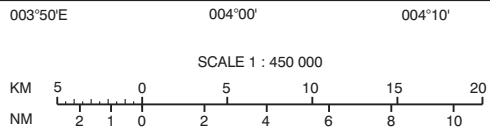
For continuation of the routes see AD 2.EHRD-SID-OVERVIEW

SCHIPHOL / SPL
108.400 / CH21X
521955.7N 0044459.6E

CAUTION
Close-in obstacles up to 110 FT shortly after RWY end (see EHRD AD 2.10)

ROTTERDAM / RTM
110.400 / CH41X
515825.3N 0042851.5E

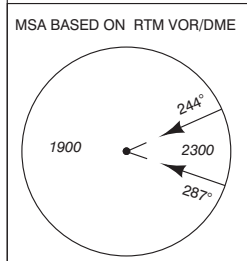
CAUTION
VFR flights without ATC clearance permitted.



RD181 515839.2N 0042947.5E
RD182 SEE SID DESCRIPTION
RD183 SEE SID DESCRIPTION
RD184 SEE SID DESCRIPTION
RD185 SEE SID DESCRIPTION
RD186 515749.6N 0042141.5E

TWR 118.205 Rotterdam Tower Primary
119.705 O/R

APP 122.990 Rotterdam Approach
119.055 Schiphol Approach / Departure
121.205
121.500 General Emergency
ATIS 128.565 Rotterdam Information



DISTANCES IN NM
ALTITUDES IN FEET
DIRECTIONS ARE MAGNETIC

AVERAGE VAR 2° E (2025)

— SID
— ATS ROUTE

CHANGE 0326: MAGVAR 2025; editorial.