

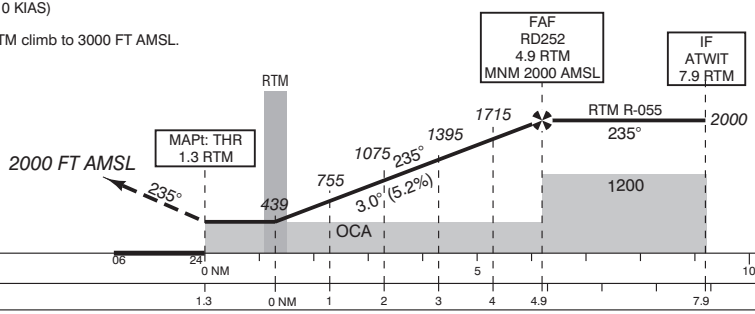
**NOTES:**  
1. VOR approach may be used at ATC discretion or in case of COM-failure when unable RNAV.  
2. DME required.

**CAUTION**  
Turn not later than 5 RTM on holding outbound.

**CAUTION**  
Circling approaches southeast of RWY 06/24 and extended centre line are prohibited (SE part of Rotterdam CTR).

Missed approach:  
- Climb on track 235° MAG to 2000 FT AMSL;  
- Inform ATC;  
- At 8.0 RTM turn right (MAX 210 KIAS) and maintain 2000 FT AMSL;  
- When established inbound RTM climb to 3000 FT AMSL.

TRANSITION LEVEL BY ATC  
TRANSITION ALTITUDE 3000 FT AMSL



DIST RELATED TO RTM DME	0.6	2.4	1.3	0 NM	1	2	3	4	4.9	7.9	10
-------------------------	-----	-----	-----	------	---	---	---	---	-----	-----	----

GS IN KT	60	80	100	120	140	160	180
VERTICAL SPEED	320 FT/MIN	425 FT/MIN	530 FT/MIN	635 FT/MIN	745 FT/MIN	850 FT/MIN	955 FT/MIN

OCA (OCH) ELEV THR 24: -14.6 FT				MSA BASED ON RTM VOR/DME	
ACFT CAT	VOR MAPt: THR	CIRCLING*	* Circling SE of RWY 06/24 is prohibited (see CAUTION).	THR 24	515742.7N 0042709.7E
A	430 (444)	490 (504)		RD252	520103.1N 0043532.9E
B		960 (974)			
C		1050 (1064)			
D		1050 (1064)			
CEILING AND VISIBILITY MINIMA				DIRECTIONS ARE MAGNETIC DISTANCES IN NM ALTITUDES AND ELEVATIONS IN FEET	
TAKE-OFF	DAY:	NA	NIGHT:	NA	
LANDING	DAY:		NIGHT:		

