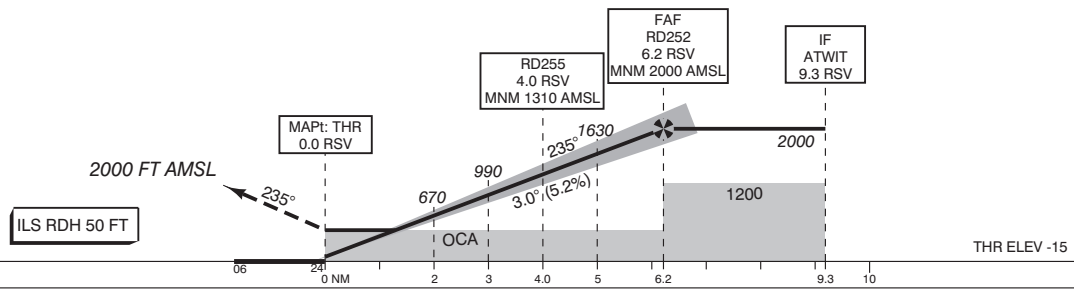


APP	122.990	Rotterdam Approach
TWR	118.205	Rotterdam Tower
	119.705	O/R
	121.500	General Emergency
ATIS	128.565	Rotterdam Information
LOC	110.900	RSV
DME	CH46X	RSV
GP	330.800	

Missed approach:
- Track 235° MAG to RD214 and climb to 2000 FT AMSL;
- Inform ATC;
- At RD214 turn left to DOFMU.

TRANSITION LEVEL BY ATC
TRANSITION ALTITUDE 3000 FT AMSL



DIST RELATED TO RSV DME	06	24	0 NM	2	3	4.0	5	6.2	9.3	10
-------------------------	----	----	------	---	---	-----	---	-----	-----	----

GS IN KT	60	80	100	120	140	160	180
VERTICAL SPEED	320 FT/MIN	425 FT/MIN	530 FT/MIN	635 FT/MIN	745 FT/MIN	850 FT/MIN	955 FT/MIN

OCA (OCH) ELEV THR 24: -14.6 FT				* Circling SE of RWY 06/24 is prohibited (see CAUTION).	THR 24 515742.7N 0042709.7E RD203 520257.6N 0044549.0E RD214 515014.2N 0040833.6E RD252 520103.1N 0043532.9E RD255 515952.7N 0043235.8E	MSA BASED ON RTM VOR/DME
ACFT CAT	CAT I	LOC MAPt: THR	CIRCLING*			
A	187 (202)	440 (454)	490 (504)			
B	197 (212)		960 (974)			
C	204 (219)		1050(1064)			
D	214 (229)		1050(1064)			
CEILING AND VISIBILITY MINIMA				DIRECTIONS ARE MAGNETIC DISTANCES IN NM ALTITUDES AND ELEVATIONS IN FEET		
TAKE-OFF	DAY:	NA	NIGHT:	NA		
LANDING	DAY:		NIGHT:			