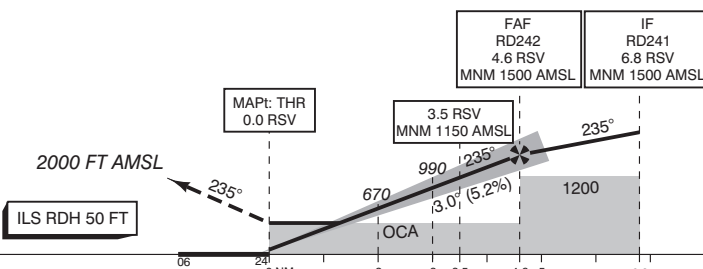


Missed approach:  
- Track 235° MAG to RD214 and climb to 2000 FT AMSL;  
- Inform ATC;  
- At RD214 turn left to DOFMU.

TRANSITION LEVEL BY ATC  
TRANSITION ALTITUDE 3000 FT AMSL

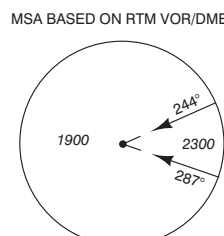


DIST RELATED TO RSV DME | 06 24 0 NM 2 3 3.5 4.6 5 6.8 10 | THR ELEV -15

GS IN KT	60	80	100	120	140	160	180
VERTICAL SPEED	320 FT/MIN	425 FT/MIN	530 FT/MIN	635 FT/MIN	745 FT/MIN	850 FT/MIN	955 FT/MIN

OCA (OCH) ELEV THR 24: -14.6 FT

ACFT CAT	CAT I	LOC MAPt: THR	CIRCLING*	* Circling SE of RWY 06/24 is prohibited (see CAUTION).	THR 24	515742.7N	0042709.7E
A	187 (202)	440 (454)	490 (504)		RD214	515014.2N	0040833.6E
B	197 (212)		960 (974)		RD241	520123.6N	0043624.4E
C	204 (219)		1050(1064)		RD242	520012.2N	0043324.8E
D	214 (229)		1050(1064)				



CEILING AND VISIBILITY MINIMA				DIRECTIONS ARE MAGNETIC DISTANCES IN NM ALTITUDES AND ELEVATIONS IN FEET
TAKE-OFF	DAY:	NIGHT:		
LANDING	DAY:	NA	NIGHT:	