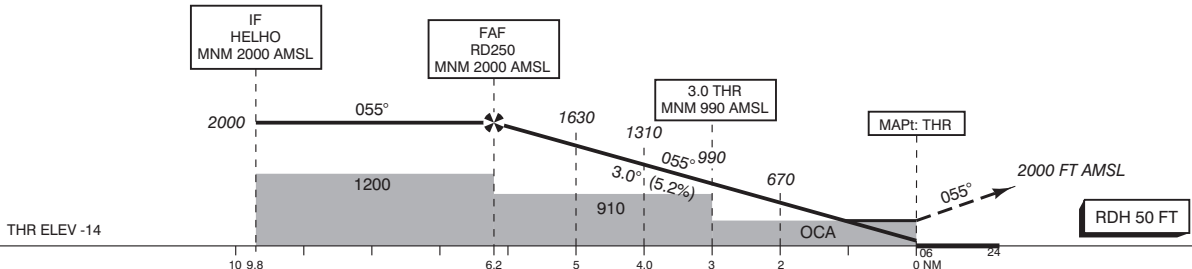


TRANSITION LEVEL BY ATC
TRANSITION ALTITUDE 3000 FT AMSL

Missed approach:
- Track 055° MAG to RD212 and climb to 2000 FT AMSL;
- Inform ATC;
- At RD212 turn right (MAX 210 KIAS) to RD213, then proceed via KAKKO to DOFMU.



GS IN KT	60	80	100	120	140	160	180
VERTICAL SPEED	320 FT/MIN	425 FT/MIN	530 FT/MIN	635 FT/MIN	745 FT/MIN	850 FT/MIN	955 FT/MIN

OCA (OCH) ELEV THR 06: -14.4 FT			
ACFT CAT	LPV	LNAV/VNAV MNM TEMP -20°C	LNAV
A	240 (255)	323 (337)	470 (484)
B	250 (265)	334 (348)	
C	259 (274)	344 (358)	
D	269 (284)	354 (368)	
CEILING AND VISIBILITY MINIMA			
TAKE-OFF	DAY:	NA	NIGHT: NA
LANDING	DAY:	NA	NIGHT: NA

MSA BASED ON RTM VOR/DME		
THR 06	515711.0N	0042550.4E
RD201	514806.4N	0041154.5E
RD212	520203.2N	0043804.7E
RD213	515736.4N	0044242.2E
RD250	515350.0N	0041728.8E
RD254	515138.8N	0035412.7E

