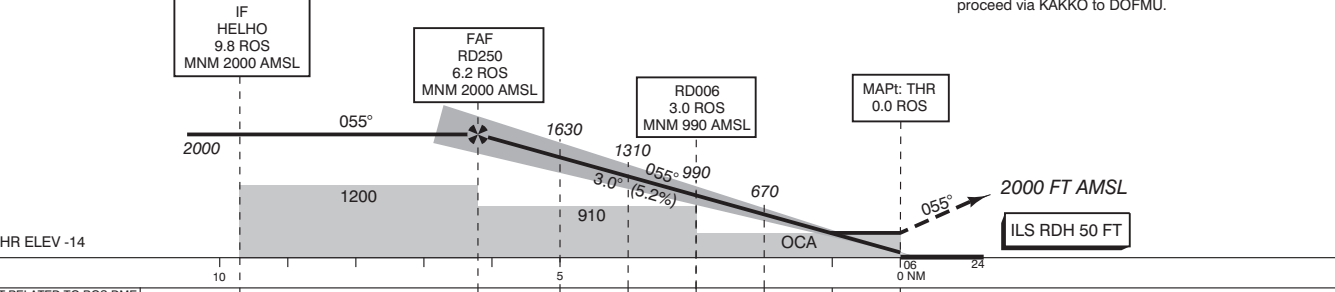


TRANSITION LEVEL BY ATC
TRANSITION ALTITUDE 3000 FT AMSL

Missed approach:
- Track 055° MAG to RD212 and climb to 2000 FT AMSL;
- Inform ATC;
- At RD212 turn right (MAX 210 KIAS) to RD213, then proceed via KAKKO to DOFMU.



GS IN KT	60	80	100	120	140	160	180
VERTICAL SPEED	320 FT/MIN	425 FT/MIN	530 FT/MIN	635 FT/MIN	745 FT/MIN	850 FT/MIN	955 FT/MIN

OCA(OCH) ELEV THR 06: -14.4 FT				* Circling SE of RWY 06/24 is prohibited (see CAUTION).	THR 06 515711.0N 0042550.4E RD201 514806.4N 0041154.5E RD212 520203.2N 0043804.7E RD213 515736.4N 0044242.2E RD250 515350.0N 0041728.8E RD254 515138.8N 0035412.7E	MSA BASED ON RTM VOR/DME
ACFT CAT	CAT I	LOC MAPT: THR	CIRCLING*			
A	178 (193)	470 (484)	490 (504)			
B	184 (199)		960 (974)			
C	194 (209)		1050 (1064)			
D	201 (216)		1050 (1064)			
CEILING AND VISIBILITY MINIMA				DIRECTIONS ARE MAGNETIC DISTANCES IN NM ALTITUDES AND ELEVATIONS IN FEET		
TAKE-OFF	DAY:	NA	NIGHT:	NA		
LANDING	DAY:	NA	NIGHT:	NA		