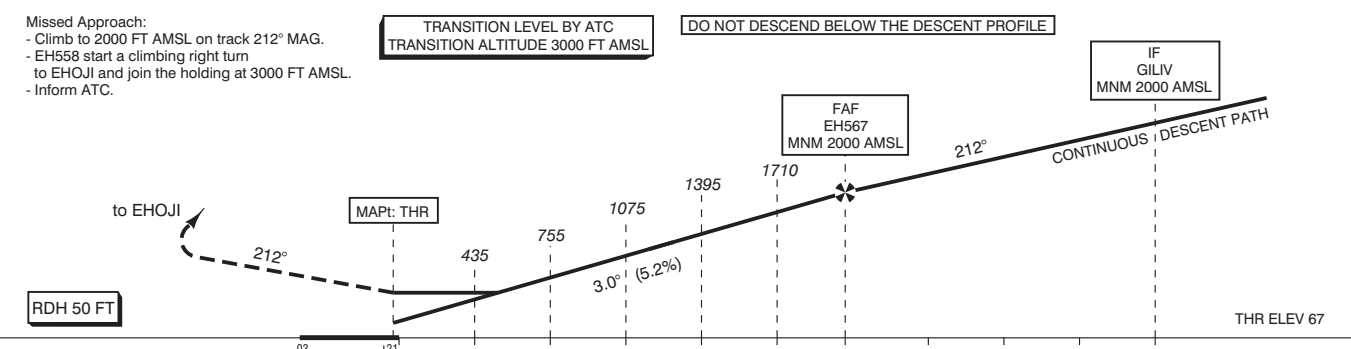
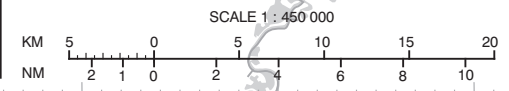


**NOTES:**  
 1. Continuous descent operation.  
 2. GNSS required.  
 3. When leaving the holding proceed direct to EH579.

**Altitudes / Speeds:**  
 When cleared for IPTAS / OKLOV / RUMER / SOPVI approach RWY 21:  
 - Continue to GILIV via the approach.  
 - Switch to QNH at EH594 / VENAV / DERUV.  
 - Establish a continuous descent path.  
 - The MNM altitudes shall be respected.  
 - Execute the LNAV/VNAV or LNAV approach RWY 21.

APP	123.180	RAPCON South
	124.530	Eindhoven Arrival
TWR	131.005	Eindhoven Tower
	122.100	
GND	121.930	Eindhoven Ground
	121.500	General Emergency
ATIS	126.030	Eindhoven Information



GS IN KT	60	80	100	120	140	160	180
VERTICAL SPEED	320 FT/MIN	425 FT/MIN	530 FT/MIN	635 FT/MIN	745 FT/MIN	850 FT/MIN	955 FT/MIN

OCA (OCH) ELEV THR 21: 66.6 FT				THR 21 512733.8N 0052305.6E		EH585 512028.2N 0055133.1E		MSA BASED ON ARP 1800
ACFT CAT	LNAV/VNAV MNM TEMP -20°C	LNAV MAPt: THR	CIRCLING	EH558 512428.9N 0051938.6E	EH589 513016.1N 0055348.7E	EH591 513611.7N 0055123.1E		
A	334 (267)	450 (390)	NOT ALLOWED	EH567 513223.9N 0052831.6E	EH594 513712.4N 0052041.6E	EH596 513038.4N 0054223.6E		
B	344 (277)			EH579 513427.3N 0052103.4E				
C	354 (287)			EH582 513719.3N 0051209.3E				
D	364 (297)							
CEILING AND VISIBILITY MINIMA				DIRECTIONS ARE MAGNETIC DISTANCES IN NM ALTITUDES AND ELEVATIONS IN FEET				
TAKE-OFF	DAY: NA	NIGHT: NA						
LANDING	DAY: NA	NIGHT: NA						