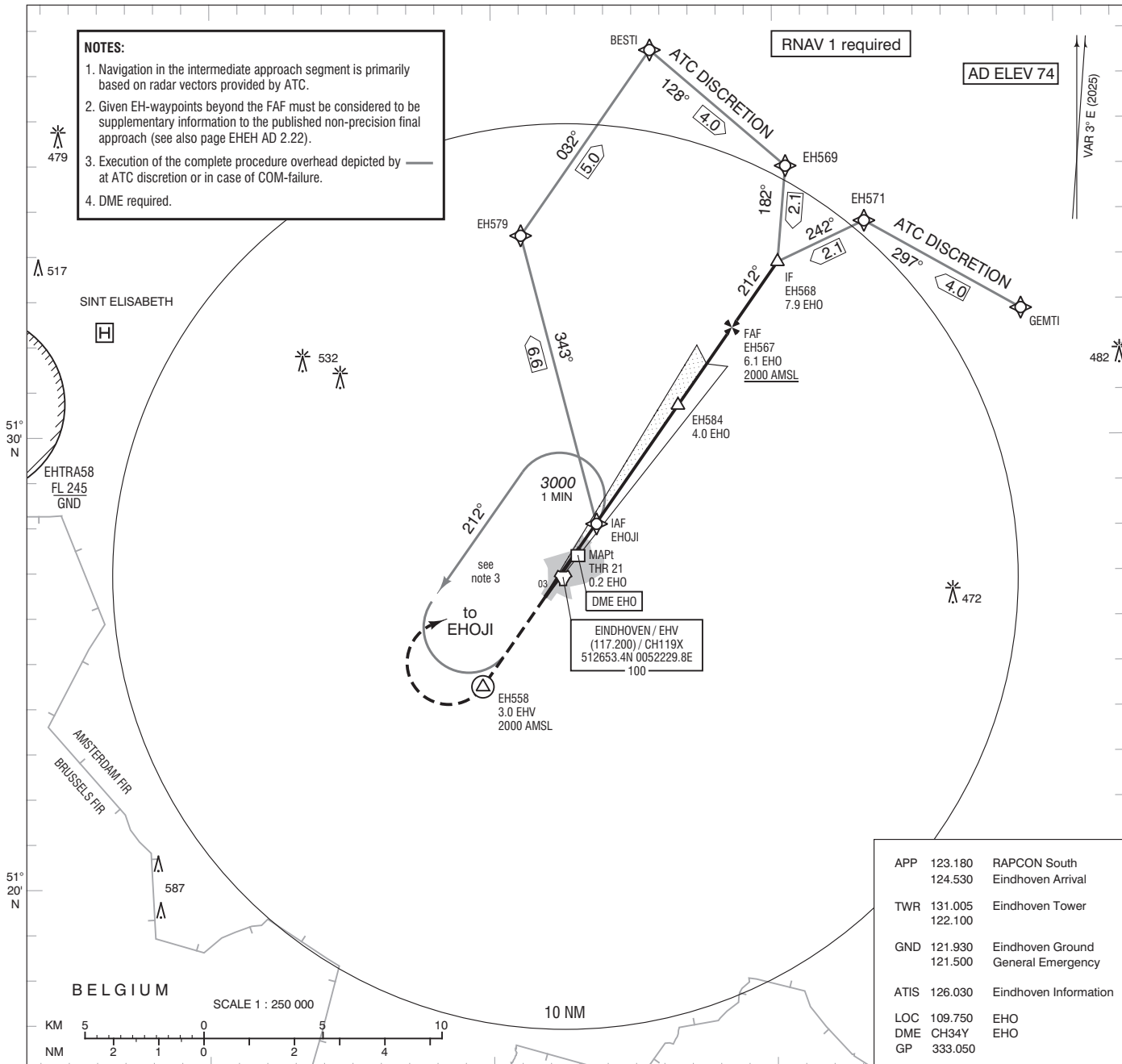


NOTES:

1. Navigation in the intermediate approach segment is primarily based on radar vectors provided by ATC.
2. Given EH-waypoints beyond the FAF must be considered to be supplementary information to the published non-precision final approach (see also page EHEH AD 2.22).
3. Execution of the complete procedure overhead depicted by — at ATC discretion or in case of COM-failure.
4. DME required.

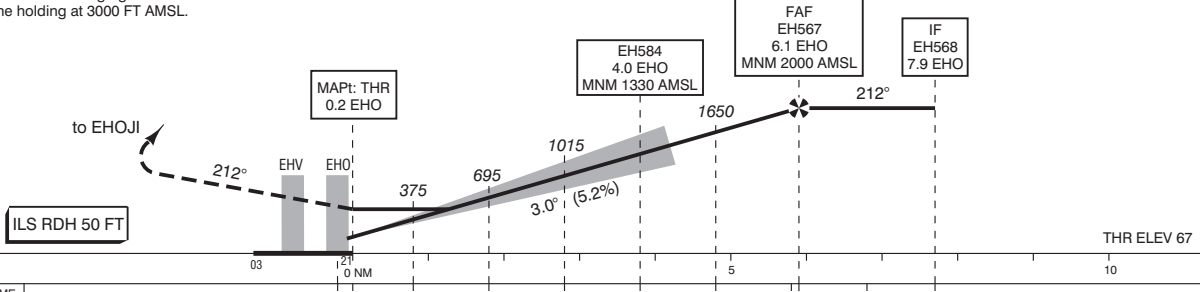


APP	123.180	RAPCON South
	124.530	Eindhoven Arrival
TWR	131.005	Eindhoven Tower
	122.100	
GND	121.930	Eindhoven Ground
	121.500	General Emergency
ATIS	126.030	Eindhoven Information
LOC	109.750	EHO
DME	CH34Y	EHO
GP	333.050	

Missed Approach:
 - Climb to 2000 FT AMSL on track 212° MAG.
 - At 3.0 EHV / EH558 start a climbing right turn to EHOJI and join the holding at 3000 FT AMSL.
 - Inform ATC.

TRANSITION LEVEL BY ATC
 TRANSITION ALTITUDE 3000 FT AMSL

DO NOT DESCEND BELOW THE DESCENT PROFILE



DIST RELATED TO EHO DME	0 NM	0.2	1	2	3	4.0	5	6.1	7.9	10
GS IN KT	60	80	100	120	140	160	180			
VERTICAL SPEED	320 FT/MIN	425 FT/MIN	530 FT/MIN	635 FT/MIN	745 FT/MIN	850 FT/MIN	955 FT/MIN			

OCA (OCH) ELEV THR 21: 66.6 FT				THR 21 512733.8N 0052305.6E EH558 512428.9N 0051938.6E EH567 513223.9N 0052831.6E EH568 513350.9N 0053009.6E EH569 513558.1N 0053027.3E EH571 513444.8N 0053314.2E EH579 513427.3N 0052103.4E EH584 513041.2N 0052635.9E	MSA BASED ON ARP 1800
ACFT CAT	CAT I	LOC MAPt: THR	CIRCLING		
A	227 (160)	500 (433)	NOT ALLOWED		
B	236 (169)				
C	246 (179)				
D	256 (189)				
CEILING AND VISIBILITY MINIMA				BEARINGS ARE MAGNETIC DISTANCES IN NM ALTITUDES AND ELEVATIONS IN FEET	
TAKE-OFF	DAY: NA	NIGHT: NA			
LANDING	DAY: NA	NIGHT: NA			