

NOTES:

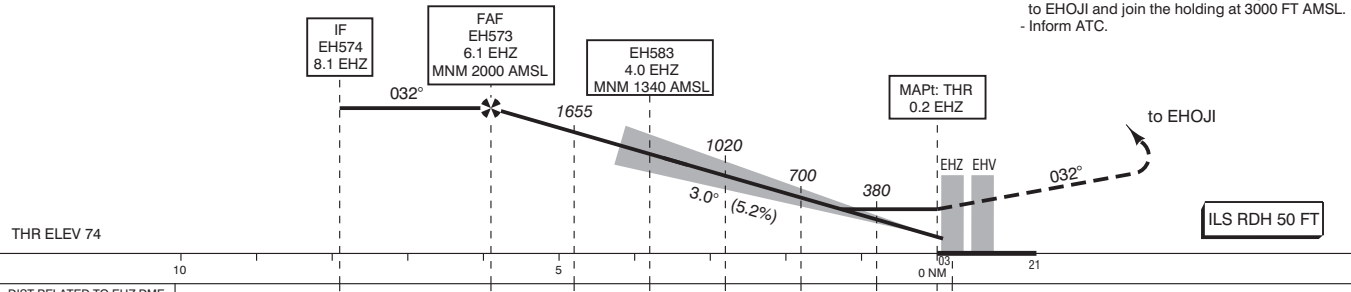
1. Navigation in the intermediate approach segment is primarily based on radar vectors provided by ATC.
2. Given EH-waypoints beyond the FAF must be considered to be supplementary information to the published non-precision final approach (see also page EHEH AD 2.22).
3. Execution of the complete procedure overhead depicted by — at ATC discretion or in case of COM-failure.
4. DME required.

APP	123.180	RAPCON South
	124.530	Eindhoven Arrival
TWR	131.005	Eindhoven Tower
	122.100	
GND	121.930	Eindhoven Ground
	121.500	General Emergency
ATIS	126.030	Eindhoven Information
LOC	109.750	EHZ
DME	CH34Y	EHZ
GP	333.050	

TRANSITION LEVEL BY ATC
TRANSITION ALTITUDE 3000 FT AMSL

DO NOT DESCEND BELOW THE DESCENT PROFILE

Missed Approach:
- Climb to 2000 FT AMSL on track 032° MAG.
- At 4.0 EHV / EH550 start a climbing left turn to EHOJI and join the holding at 3000 FT AMSL.
- Inform ATC.



DIST RELATED TO EHZ DME	8.1	6.1	5	4.0	3	2	1	0.2	0 NM	21
GS IN KT	60	80	100	120	140	160	180			
VERTICAL SPEED	320 FT/MIN	425 FT/MIN	530 FT/MIN	635 FT/MIN	745 FT/MIN	850 FT/MIN	955 FT/MIN			

OCA (OCH) ELEV THR 03: 73.3 FT				THR 03 512627.2N 0052151.0E EH550 513012.4N 0052603.7E EH573 512137.8N 0051627.5E EH574 511959.5N 0051437.9E EH578 512656.6N 0051239.0E EH583 512320.0N 0051821.6E	MSA BASED ON ARP 1800
ACFT CAT	CAT I	LOC MAPt: THR	CIRCLING		
A	239 (165)	420 (346)	NOT ALLOWED		
B	249 (175)				
C	259 (185)				
D	269 (195)				
CEILING AND VISIBILITY MINIMA				BEARINGS ARE MAGNETIC DISTANCES IN NM ALTITUDES AND ELEVATIONS IN FEET	
TAKE-OFF	DAY:	NA	NIGHT:	NA	
LANDING	DAY:		NIGHT:		