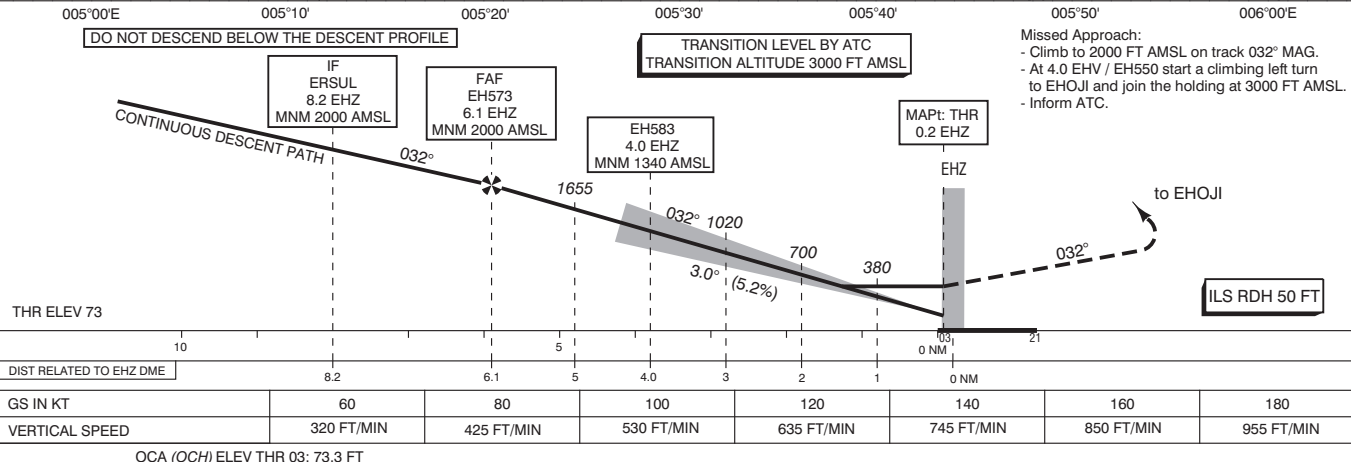


**NOTES:**

1. Continuous descent operation.
2. GNSS required.
3. LOC as MNM must be available.
4. DME required.
5. Given EH waypoints beyond the FAF must be considered to be supplementary information.
6. When leaving the holding proceed direct to EH578.

**Altitudes / Speeds:**  
When cleared for IPTAS / OKLOV / RUMER / SOPVI approach RWY 03:  
- Continue to ERSUL via the approach.  
- Switch to QNH at EH582 / SOMEM.  
- Establish a continuous descent path.  
- The MNM altitudes shall be respected.  
- Execute the ILS or LOC approach RWY 03.

APP	123.180	RAPCON South
	124.530	Eindhoven Arrival
TWR	131.005	Eindhoven Tower
	122.100	
GND	121.930	Eindhoven Ground
	121.500	General Emergency
ATIS	126.030	Eindhoven Information
LOC	109.750	EZH
DME	CH34Y	EZH
GP	333.050	



DO NOT DESCEND BELOW THE DESCENT PROFILE		TRANSITION LEVEL BY ATC TRANSITION ALTITUDE 3000 FT AMSL		Missed Approach: - Climb to 2000 FT AMSL on track 032° MAG. - At 4.0 EHV / EH550 start a climbing left turn to EHOJI and join the holding at 3000 FT AMSL. - Inform ATC.	
THR ELEV 73					
DIST RELATED TO EHZ DME	8.2	6.1	5	4.0	3
GS IN KT	60	80	100	120	140
VERTICAL SPEED	320 FT/MIN	425 FT/MIN	530 FT/MIN	635 FT/MIN	745 FT/MIN
OCA (OCH) ELEV THR 03: 73.3 FT					
ACFT CAT	CAT I	LOC MAPt: THR	CIRCLING	THR 03	512627.2N 0052151.0E
A	239 (165)	420 (346)	NOT ALLOWED	EH550	513012.4N 0052603.7E
B	249 (175)			EH587	511904.4N 0054157.0E
C	259 (185)			EH588	511810.0N 0052624.1E
D	269 (195)			EH589	513016.1N 0055348.7E
				EH590	513535.5N 0055220.5E
				EH583	512320.0N 0051821.6E
				EH595	513040.6N 0051015.7E
CEILING AND VISIBILITY MINIMA				MSA BASED ON ARP	
TAKE-OFF	DAY:	NA	NIGHT:	NA	1800
LANDING	DAY:	NA	NIGHT:	NA	