

Contact

Post: LVNL
Aeronautical Information Service
P.O. Box 75200
1117 ZT Schiphol
The Netherlands
Tel: +31 (0)20 406 3520
Email: ais@lvnl.nl

**AIP SUP
15/2025
Publication date 24 JUL 2025**

TEMPORARY RESTRICTED AREAS ZANDVOORT ABOVE FORMULA 1 DUTCH GRAND PRIX

1 INTRODUCTION

The Formula 1 Dutch Grand Prix event will take place at Zandvoort between Friday 29 August 2025 and Sunday 31 August 2025. During this event, and the day leading up to the event (28 August), a large number of helicopters will be engaged in (VIP) transport and filming the event. Surveillance and crowd control flights with UAS may take place. Other commercial flights for banner towing, photo flights or sightseeing are expected. Two temporary helicopter landing sites are established around the circuit. Zandvoort is located in uncontrolled airspace, bordering the Schiphol CTR.

In order to allow certain parties to carry out aviation activities related to this event in a structured manner in uncontrolled airspace, a number of additional regulations and restrictions are established, encompassing the wider Zandvoort area, by means of temporary restricted areas.

2 ADDITIONAL REGULATIONS

Between **Thursday 28 August 2025 and Sunday 31 August 2025** three temporary restricted areas are established. The dimensions and activation times of the areas are described and depicted in paragraph 3.

To operate in these areas the following regulations apply:

- The allocated VHF radio communication channel is 128.315.
- All aircraft flying in one of the restricted areas maintain an air-ground voice communication watch on 128.315 at all times;
- VFR rules remain applicable;
- Maintaining listening watch on Amsterdam Information 124.300 is not mandatory
- Overflying the race-circuit while the helicopter filming the event is flying, is prohibited, except when it concerns emergency services or military flights;
- For briefing and further information on possibilities to perform (commercial) flights on the coastal route contact Helicentre, TEL: +31 (0)88 122 1210.

Definitions

- Coordinated flight: flight movement communicated with the Aeronautical Station Operator on the VHF communication channel 128.315., or via telephone in case an aircraft is not equipped with a working radio.
- The Formula 1 organisation: the entity appointed by the organisers of the Formula 1 Heineken Dutch Grand Prix.

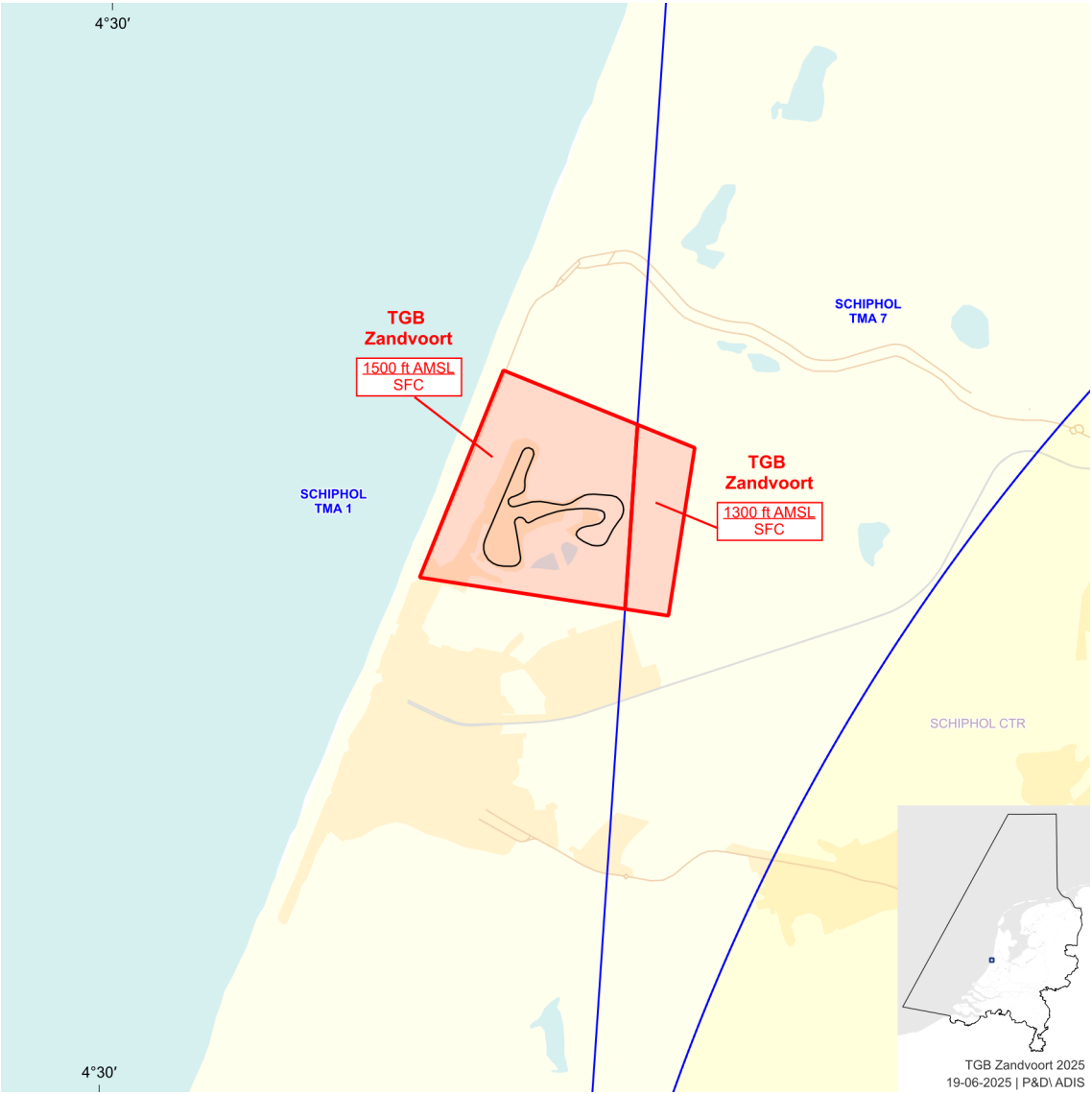
3 TEMPORARY RESTRICTED AREAS

3.1 Temporary restricted area Zandvoort (28 AUG 2025)

The area is prohibited for all civil aircraft, except:

- Coordinated flights operated by or on behalf of police, HEMS, SAR and fire brigade;
- Test flights by helicopter(s) appointed on behalf of the Formula 1 organisation to film the event;
- Coordinated helicopter flights to and from the temporary landing sites "Zandvoort Medical" and "Zandvoort Golfbaan";
- Coordinated UAS flights performing crowd-management tasks on behalf of the Formula 1 organisation;

The temporary restricted area is prohibited for all other aircraft; this includes, but is not limited to, all other UAS, model aircraft, manned balloons, parachutes and kites.



Name Lateral limits	Vertical limits	Remarks
Temporary restricted area Zandvoort 522348N 0043226E - 522331N 0043337E - 522253N 0043328E - 522301N 0043156E - 522348N 0043226E. Part overlapping Schiphol TMA 7 is excluded.	<u>1500 FT AMSL</u> SFC	28 AUG UDP

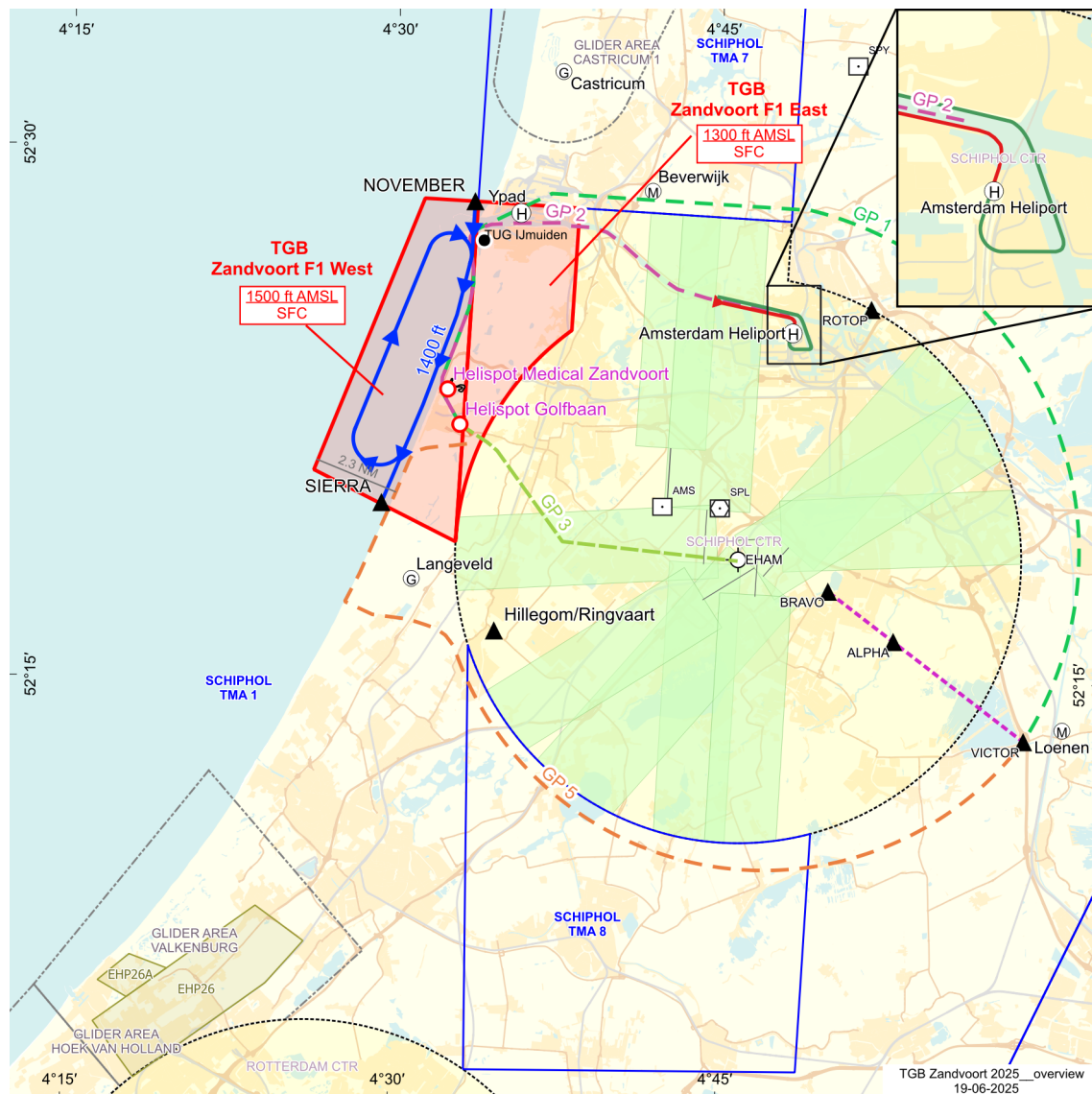
3.2 Temporary restricted areas Zandvoort F1 West and Zandvoort F1 East (29-31 AUG 2025)

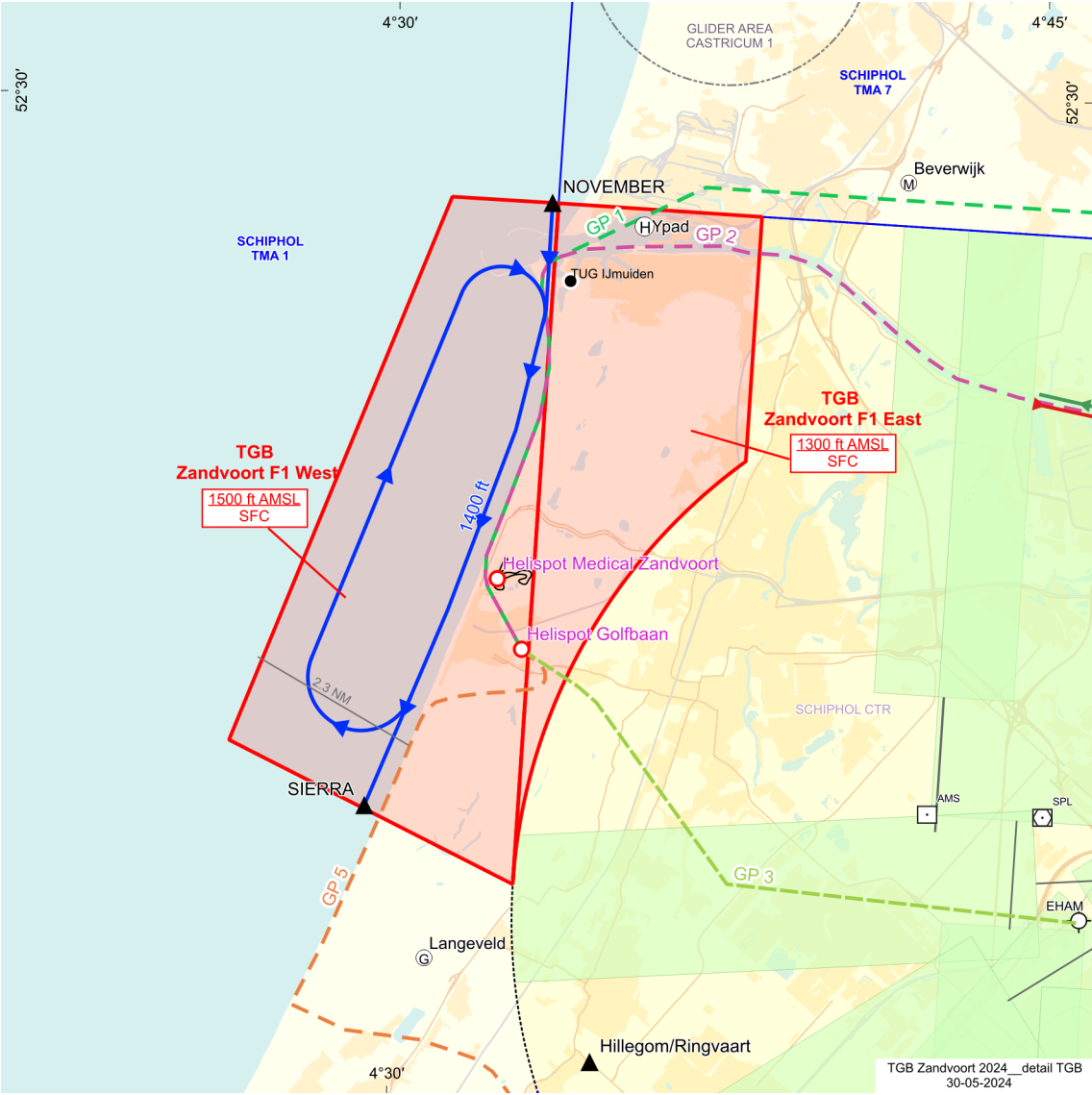
The area is prohibited for all civil aircraft, except:

- Coordinated flights operated by or on behalf of police, HEMS, SAR and fire brigade;
- Coordinated helicopter flights to and from the temporary landing sites "Zandvoort Medical" and "Zandvoort Golfbaan";
- Flights by the helicopter(s) appointed on behalf of the Formula 1 organization to film the event up to 1200 FT AMSL;
- Coordinated flights to and from EHYP (YPAD) helipad for the purpose of pilot services to ships;
- Coordinated UAS flights performing crowd management tasks on behalf of the Formula 1 organization;
- Coordinated drone show, part of the entertainment in the evening on behalf of the organization, only after helicopters stop flying to and from the temporary landing locations;
- Banner towing flights, commercial photo flights and commercial sightseeing flights are allowed, only on the therefore designated route and altitude, depicted in blue on the chart below:
 - Direction north to south along the coast, staying over or west of the beach;
 - Entry via NOVEMBER, exit via SIERRA;
 - Flight altitude is 1400 FT AMSL.

On **Sunday 31 August, between 1230-1300** only police, HEMS, SAR, fire brigade, military flights and flights by the helicopter appointed to film the event are allowed. The areas are closed to all other air traffic.

The temporary restricted areas are prohibited for all other aircraft; this includes, but is not limited to, all other UAS, model aircraft, manned balloons, parachutes and kites.





Name Lateral limits	Vertical limits	Remarks
Temporary restricted area Zandvoort F1 West 522831N 0043343E - 522550N 0043328E - 521855N 0043250E - 522054N 0042616E - 522835N 0043116E - 522831N 0043343E.	<u>1500 FT AMSL</u> SFC	29-31 AUG UDP
Temporary restricted area Zandvoort F1 East 522831N 0043343E - 522821N 0043824E - 522454N 0043805E - along anticlockwise arc (radius 8 NM, centre 521829N 0044551E - 521855N 0043250E - 522550N 0043328E - 522831N 0043343E.	<u>1300 FT AMSL</u> SFC	29-31 AUG UDP

4 DOCUMENT CONTROL

REF AIP ENR 5.1, AD 2.EHAM-VAC.1. Decision ILT-2025/17883 (in Dutch) is leading.
Consult NOTAM for latest information.

ISSN: 0165-7291