

AD ELEV -11

After landing contact Schiphol Ground:

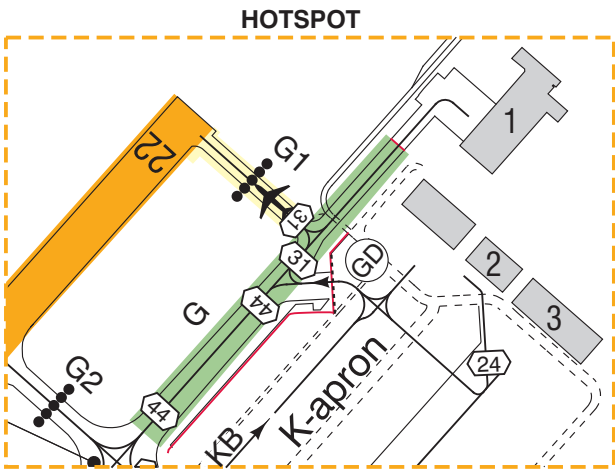
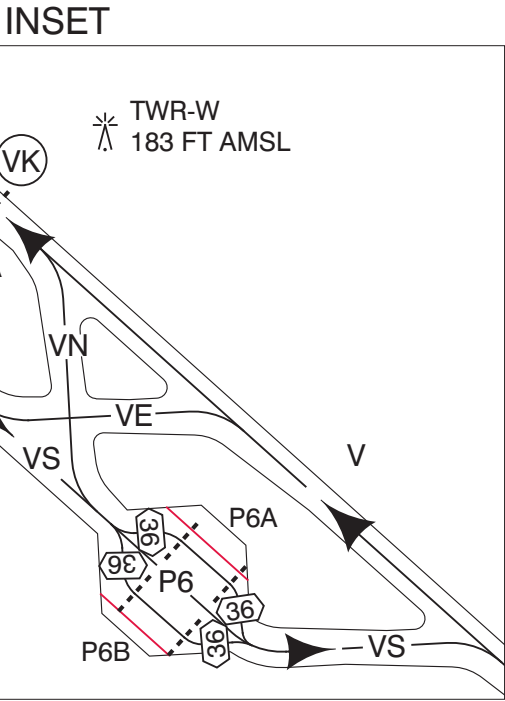
RWY	CHANNEL
04/22	121.805
06/24	121.705
09/27	121.805
18C/36C	121.905
18R	121.560
36R	121.805

B747-8

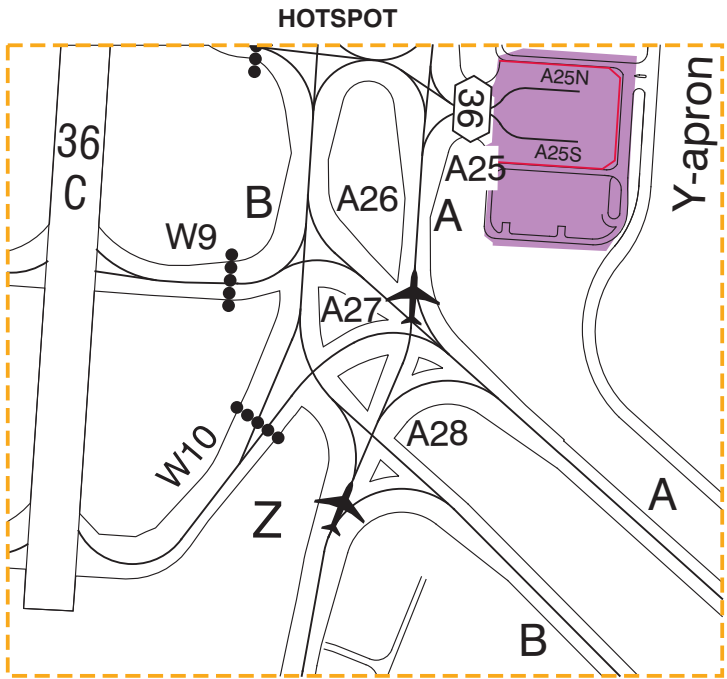
Operational restrictions.
For additional information
see AD 2.23.

Aircraft stands for parking the B747-8:

E18, E24
G9
J81
P10, P12, P14, P16
R72, R74, R77, R80
S64-S69, S77-S96



CAUTION:
TWY G1 IS LOCATED IN CLOSE PROXIMITY TO APRON EXIT GD.
HOLD SHORT OF RWY 22 UNLESS INSTRUCTED OTHERWISE BY SCHIPHOL TWR.



CAUTION:
1. PILOTS MUST CONTINUE ON TWY A OR B UNLESS INSTRUCTED OTHERWISE BY ATC.
2. PILOTS ON TWY Z THAT ARE INSTRUCTED BY ATC TO FOLLOW TWY A TO THE NORTH SHALL CONTINUE NORTHBOUND ON TWY A.
3. TURNING AT TWY A28 FROM TWY A TO TWY B AND VICE VERSA IS PROHIBITED.
4. AFTER VACATING RWY 18C VIA TWY W9 OR TWY W10, TAXIING IS ONLY POSSIBLE IN NON-STANDARD TAXI ROUTING EITHER TO TWY A SOUTHBOUND OR TWY B NORTHBOUND.

DIRECTIONS ARE MAGNETIC
ELEVATIONS IN FEET AMSL
DIMENSION IN METERS

General taxi instructions

RTF instruction inbound:
VIA NORTH: taxi via TWY A and north side of airport.
VIA SOUTH: taxi via TWY B and TWY Q.

RTF instruction outbound:
VIA NORTH: taxi via TWY B and north side of airport.
VIA SOUTH: taxi via TWY A and TWY Q.

CAUTION:

- 1 TWY S7W designated for crossing RWY 06/24 only.
- 2 Avoid holding on the upslope between A19 and A20 to prevent backward movement of the aircraft.
- 3 Oversteering required for aircraft with wingspan >= 36 M. On TWY N turning towards TWY G8 v.v., between TWY G2 and TWY G and between TWY G and TWY G5.
- 4 J-apron and K-apron is not controlled by ATC.
- 5 Towing only.
- 6 Vacating RWY 04 via TWY G1 is restricted to aircraft with a maximum wingspan of 31 M due to wingspan restriction on adjacent taxiways.
- 7 Standard taxi routing, unless otherwise instructed by ATC, for ACFT docking at ACFT stands specified below:
ACFT stands B15 - B35: TWY A4W.
ACFT stands C6 - C14: TWY A4E.
ACFT stand E24: aircraft with wingspan greater than 65 M: TWY A12.
ACFT stands G3 - G9 and H1 - H7, aircraft with wingspan 36 M or less: from TWY A/B via TWY A19E (orange line).
ACFT stands G71 - G79, aircraft with wingspan 36 M or less: from TWY A/B via TWY A19W (blue line).
ACFT stands G3 - G9 and G73 - G79, aircraft with wingspan greater than 36 M: from TWY A/B via TWY A19C.
- 8 To TWY A: diverge left on N3, enter TWY A14, turn left onto TWY A.
- 9 Displaced runway end RWY 36R is indicated by red lights across the runway. Do not cross displaced runway end RWY 36R.
- 10 TWY E8 MAX wingspan 36 M only applicable to aircraft vacating runway 36R or aircraft entering runway 18L.

SCALE 1 : 20 000
M 500 0 500
FT 1000 0 1000 2000

LEGEND

- No-entry: runway entry prohibited at this point.
TWY E1 from TWY A, A8 and B.
TWY G3 from TWY G.
TWY N8 from TWY A and B.
TWY W6 from TWY A, B and D.
- STOP BAR
- INTERMEDIATE HOLDING POSITION LIGHTED
MAX WINGSPAN 29 M
LIMITED ENTRY
- STANDARD TAXI ROUTING, UNLESS OTHERWISE INSTRUCTED BY ATC.
ALL OTHER ROUTES MAY BE USED TWO-WAY ON ATC DISCRETION ONLY.
- ATC SERVICE BDY
- BLAST FENCE
- HANGAR NO. 12
- FREIGHT STATION NO. III
- SERVICE ROAD
- NOT IN USE
- HOTSPOT
- RUNWAY
- ENTRY / EXIT
- TAXIWAY
- CODE LETTER F ACFT
- PROHIBITED
- RESTRICTED