

AD ELEV -11

AN124

Operational restrictions.  
For additional information  
see AD 2.23.

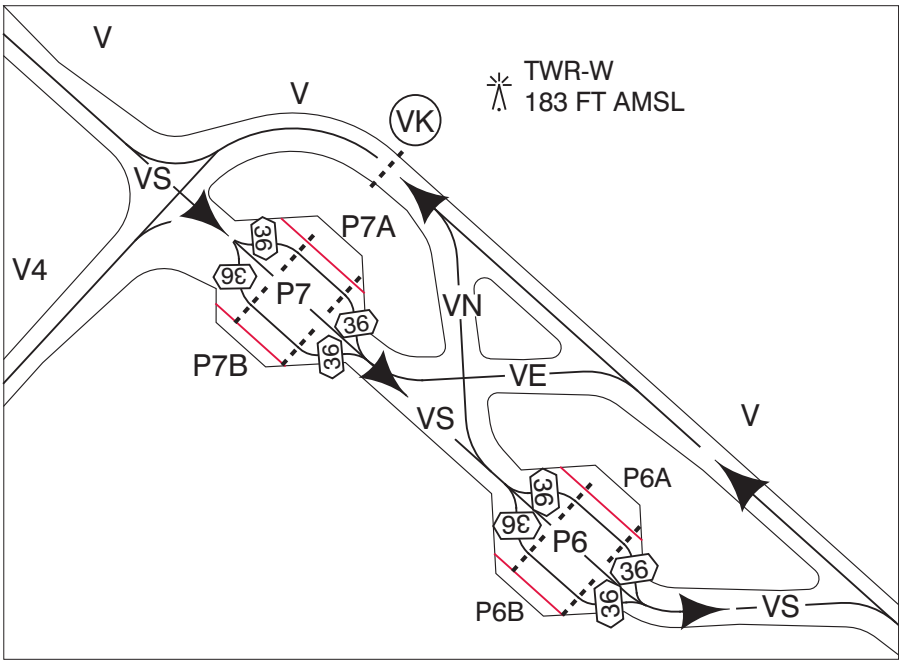
Aircraft stands for parking the AN124:

J81  
P10, P12, P14, P16  
R74  
S64, S67, S77-S96

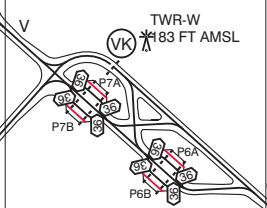
After landing contact Schiphol Ground:

RWY	CHANNEL
04/22	121.805
06/24	121.705
09/27	121.805
18C/36C	121.905
18R	121.560
36R	121.805

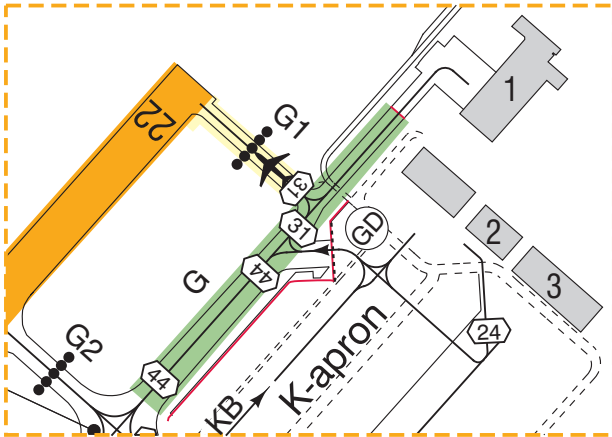
INSET



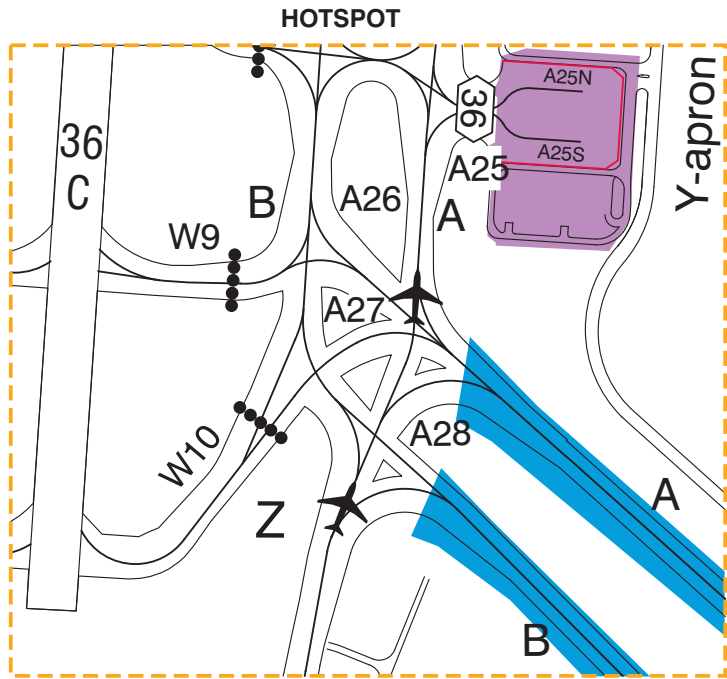
FOR TWY NAMES AND  
STANDARD TAXI ROUTING SEE INSET



HOTSPOT



CAUTION:  
TWY G1 IS LOCATED IN CLOSE PROXIMITY TO APRON EXIT GD.  
HOLD SHORT OF RWY 22 UNLESS INSTRUCTED OTHERWISE BY SCHIPHOL TWR.



CAUTION:  
1. PILOTS MUST CONTINUE ON TWY A OR B UNLESS INSTRUCTED OTHERWISE BY ATC.  
2. PILOTS ON TWY Z THAT ARE INSTRUCTED BY ATC TO FOLLOW TWY A TO THE NORTH SHALL CONTINUE NORTHBOUND ON TWY A.  
3. TURNING AT TWY A28 FROM TWY A TO TWY B AND VICE VERSA IS PROHIBITED.  
4. AFTER VACATING RWY 18C VIA TWY W9 OR TWY W10, TAXIING IS ONLY POSSIBLE IN NON-STANDARD TAXI ROUTING EITHER TO TWY A SOUTHBOUND OR TWY B NORTHBOUND.

DIRECTIONS ARE MAGNETIC  
ELEVATIONS IN FEET AMSL  
DIMENSION IN METERS

General taxi instructions

RTF instruction inbound:  
VIA NORTH: taxi via TWY A and north side of airport.  
VIA SOUTH: taxi via TWY B and TWY Q.

RTF instruction outbound:  
VIA NORTH: taxi via TWY B and north side of airport.  
VIA SOUTH: taxi via TWY A and TWY Q.

CAUTION:

- 1 TWY S7W designated for crossing RWY 06/24 only.
- 2 Avoid holding on the upslope between A19 and A20 to prevent backward movement of the aircraft.
- 3 Oversteering required for aircraft with wingspan  $\geq 36$  M. On TWY N turning towards TWY G8 v.v., between TWY G2 and TWY G and between TWY G and TWY G5.
- 4 J-apron and K-apron is not controlled by ATC.
- 5 Towing only.
- 6 Vacating RWY 04 via TWY G1 is restricted to aircraft with a maximum wingspan of 31 M due to wingspan restriction on adjacent taxiways.
- 7 Standard taxi routing, unless otherwise instructed by ATC, for ACFT docking at ACFT stands specified below:  
ACFT stands B15 - B35: TWY A4W.  
ACFT stands C6 - C14: TWY A4E.  
ACFT stand E24: aircraft with wingspan greater than 65 M: TWY A12.  
ACFT stands G3 - G9 and H1 - H7, aircraft with wingspan 36 M or less: from TWY A/B via TWY A19E (orange line).  
ACFT stands G71 - G79, aircraft with wingspan 36 M or less: from TWY A/B via TWY A19W (blue line).  
ACFT stands G3 - G9 and G73 - G79, aircraft with wingspan greater than 36 M: from TWY A/B via TWY A19C.  
8 To TWY A: diverge left on N3, enter TWY A14, turn left onto TWY A.  
9 Displaced runway end RWY 36R is indicated by red lights across the runway. Do not cross displaced runway end RWY 36R.  
10 TWY E8 MAX wingspan 36 M only applicable to aircraft vacating runway 36R or aircraft entering runway 18L.

SCALE 1 : 20 000  
M 500 0 500  
FT 1000 0 1000 2000

LEGEND

- No entry: runway entry prohibited at this point.  
TWY E1 from TWY A, A8 and B.  
TWY G3 from TWY G.  
TWY N8 from TWY A and B.  
TWY W6 from TWY A, B and D.
- STOP BAR
- INTERMEDIATE HOLDING POSITION LIGHTED  
MAX WINGSPAN 29 M  
LIMITED ENTRY
- STANDARD TAXI ROUTING, UNLESS OTHERWISE INSTRUCTED BY ATC.  
ALL OTHER ROUTES MAY BE USED TWO-WAY ON ATC DISCRETION ONLY.
- ATC SERVICE BDY
- BLAST FENCE
- HANGAR NO. 12
- FREIGHT STATION NO. III
- SERVICE ROAD
- NOT IN USE
- HOTSPOT
- RUNWAY
- ENTRY / EXIT
- TAXIWAY
- CODE LETTER F ACFT  
PROHIBITED
- RESTRICTED