

EHTL — TERLET

Note: the following sections in this chapter are intentionally left blank:

AD 2.4, AD 2.5, AD 2.6, AD 2.7, AD 2.8, AD 2.11, AD 2.12, AD 2.13, AD 2.14, AD 2.15, AD 2.16, AD 2.19, AD 2.20, AD 2.21, AD 2.22.

EHTL AD 2.1 AERODROME LOCATION INDICATOR AND NAME

EHTL — TERLET

EHTL AD 2.2 AERODROME GEOGRAPHICAL AND ADMINISTRATIVE DATA

1	ARP co-ordinates and site at AD	520326N 0055528E Midpoint between landing strips.
2	Direction and distance from (city)	2.5 NM north of Arnhem.
3	Elevation/reference temperature	276 FT AMSL (84 M)/Not AVBL.
4	Geoid undulation at AD ELEV PSN	Not AVBL.
5	MAG VAR/annual change	2°E (2020)/9'E.
6	AD operator, postal address, telephone, telefax, email, AFS, website	Post: Stichting Nationaal Zweefvliegcentrum Terlet Apeldoornseweg 203 6816 SM Arnhem Tel: +31 (0)6 1489 8818 +31 (0)6 1317 3525 (during OPR HR) Email: havenmeester@terlet.nl URL: http://www.terlet.nl
7	Types of traffic permitted (IFR/VFR)	VFR
8	Remarks	Aerodrome available for use by national civil air traffic with gliders, motor gliders and tugs. Flights between EHTL and Schengen Treaty countries permitted. Winch and tow starts.

EHTL AD 2.3 OPERATIONAL HOURS

1	AD operator	HO; for actual OPR HR contact airport authority (see EHTL AD 2.2).
2	Customs and immigration	NIL
3	Health and sanitation	NIL
4	AIS briefing office	H24 Tel: +31 (0)20 406 2315 URL: https://www.homebriefing.nl
5	ATS reporting office (ARO)	NIL
6	MET briefing office	NIL
7	ATS	NIL
8	Fuelling	NIL
9	Handling	NIL
10	Security	NIL
11	De-icing	NIL
12	Remarks	NIL

EHTL AD 2.9 SURFACE MOVEMENT GUIDANCE AND CONTROL SYSTEM AND MARKINGS

1	Use of aircraft stand ID signs, TWY guide lines and visual docking/parking guidance system at aircraft stands	NIL
2	RWY and TWY markings and LGT	For gliders landing area 75 x 30 M; marked. 6 winch launching tracks, MNM 550 M and MAX 1100 M. For motor gliders a strip for take-off and landing (T-strip). PPR only.
3	Stop bars	NIL

4	Remarks	NIL
---	---------	-----

EHTL AD 2.10 AERODROME OBSTACLES

For obstacles at and in the vicinity of the aerodrome see AD 2.EHTL-ADC.

EHTL AD 2.17 ATS AIRSPACE

1	Designation and lateral limits	NA
2	Vertical limits	NA
3	Airspace classification	D ¹⁾
4	ATS unit call sign Language(s)	NA
5	Transition altitude	IFR: 3000 FT AMSL; VFR: 3500 FT AMSL.
6	Hours of applicability	NA
7	Remarks	¹⁾ Terlet AD is situated in Deelen CTR (MIL, see ENR 2.1 for description).

EHTL AD 2.18 ATS COMMUNICATION FACILITIES

Service designation	Call sign	Channel(s)	SATVOICE NR	Logon address	Hours of operation	Remarks
1	2	3	4	5	6	7
Aerodrome information	Terlet Radio	130.130	INFO not AVBL	INFO not AVBL	See EHTL AD 2.3	AD Info and traffic on T-strip.
		123.380	INFO not AVBL	INFO not AVBL	See EHTL AD 2.3	Traffic on secondary strips during weekends.
TWR	Deelen Tower	129.930	INFO not AVBL	INFO not AVBL	HO	NIL

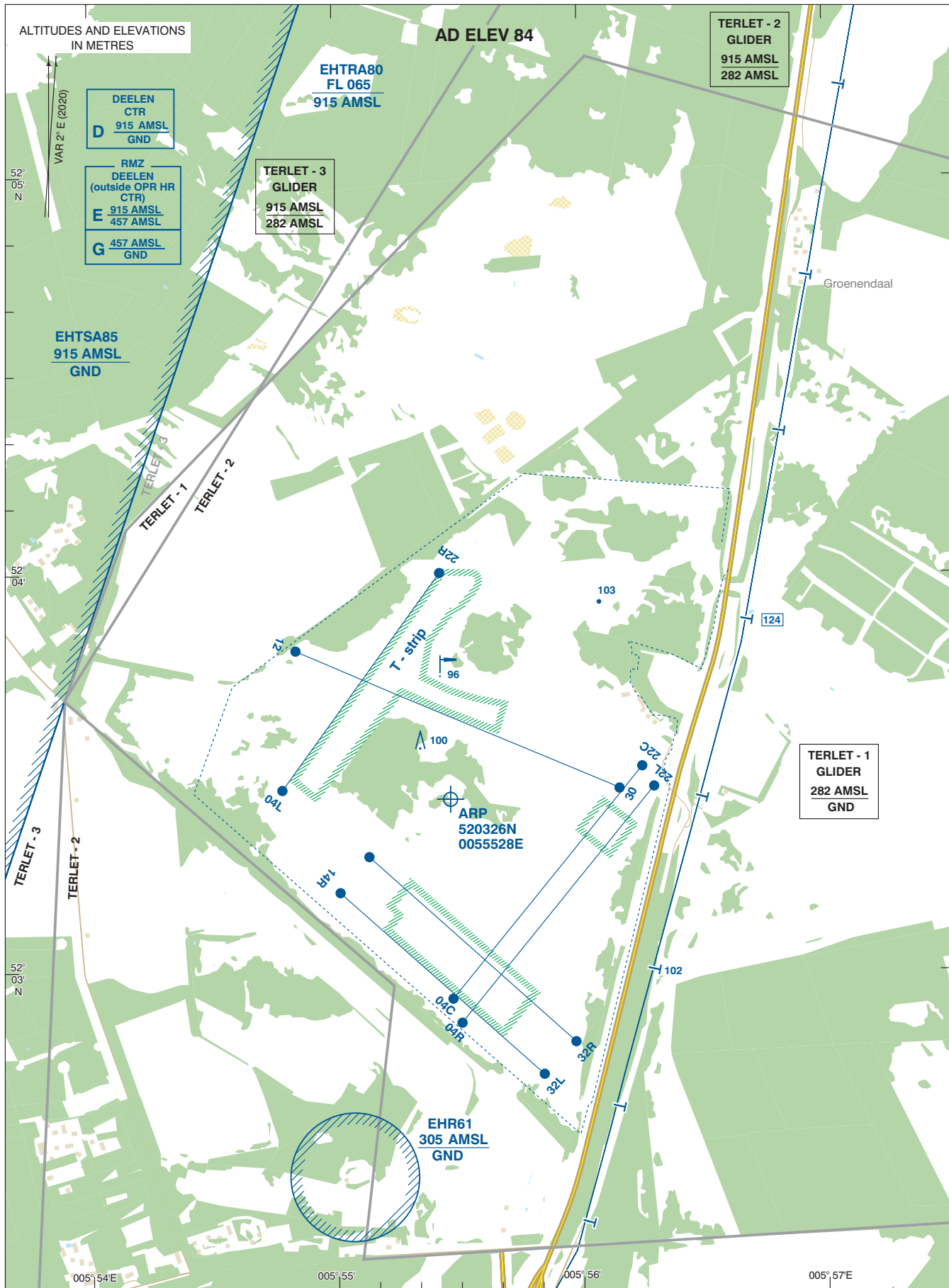
EHTL AD 2.23 ADDITIONAL INFORMATION

1 CAUTION AND ADDITIONAL INFORMATION

- Maximum height for releasing launching cable is 700 M / 2300 FT AAL (784 M / 2576 FT AMSL).
- Activation of area Terlet 1, 2 and 3 see ENR 1.2 paragraph 3.2.6.2.

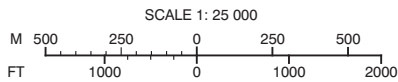
EHTL AD 2.24 CHARTS RELATED TO AN AERODROME

Type of chart	Page
Aerodrome chart	AD 2.EHTL-ADC
Visual approach chart/VFR procedures	AD 2.EHTL-VAC



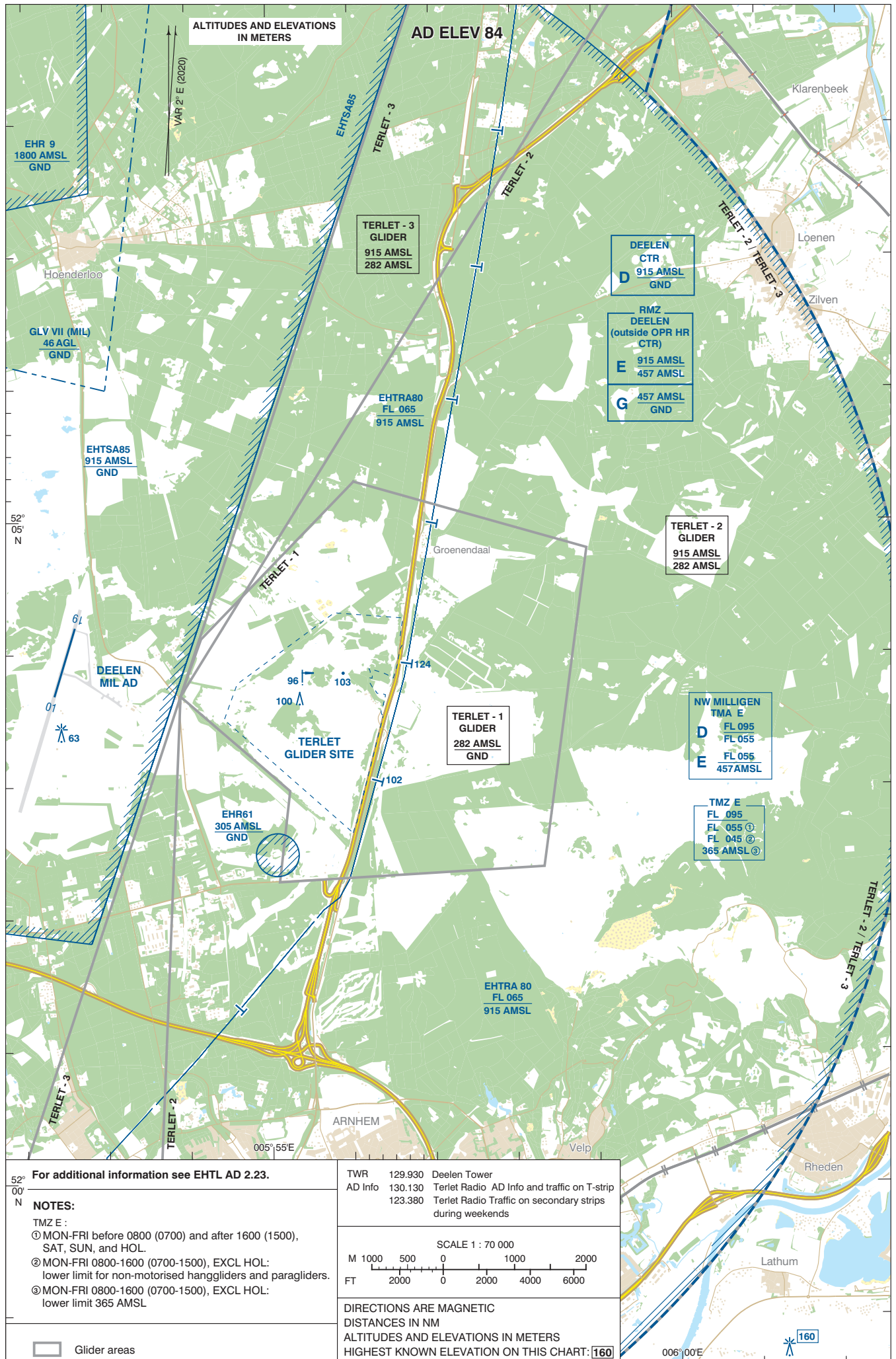
For additional information see EHTL AD 2.23.

- Landing strip/grass
- Winch launching track
- Glider areas



DIRECTIONS ARE MAGNETIC
DISTANCES IN NM
ALTITUDES AND ELEVATIONS
IN METRES
HIGHEST KNOWN ELEVATION
ON THIS CHART: 124

TWR	129.930	Deelen Tower	
AD Info	130.130	Terlet Radio	AD Info and traffic on T-strip
	123.380	Terlet Radio	Traffic on secondary strips during weekends



52° 00' N

For additional information see EHTL AD 2.23.

NOTES:

TMZ E :

① MON-FRI before 0800 (0700) and after 1600 (1500), SAT, SUN, and HOL.

② MON-FRI 0800-1600 (0700-1500), EXCL HOL: lower limit for non-motorised hanggliders and paragliders.

③ MON-FRI 0800-1600 (0700-1500), EXCL HOL: lower limit 365 AMSL

□ Glider areas

TWR	129.930	Deelen Tower
AD Info	130.130	Terlet Radio AD Info and traffic on T-strip
	123.380	Terlet Radio Traffic on secondary strips during weekends

SCALE 1 : 70 000

M 1000 500 0 1000 2000

FT 2000 0 2000 4000 6000

DIRECTIONS ARE MAGNETIC
DISTANCES IN NM
ALTITUDES AND ELEVATIONS IN METERS
HIGHEST KNOWN ELEVATION ON THIS CHART: 160



CHANGE: lower limit glider area TERLET - 2; editorial.

