

**EHTX — TEXEL/Texel**

Note: the following sections in this chapter are intentionally left blank:  
AD 2.7, AD 2.8, AD 2.11, AD 2.14, AD 2.19, AD 2.20, AD 2.21.

**EHTX AD 2.1 AERODROME LOCATION INDICATOR AND NAME**

EHTX — TEXEL/Texel

**EHTX AD 2.2 AERODROME GEOGRAPHICAL AND ADMINISTRATIVE DATA**

1	ARP co-ordinates and site at AD	530655N 0045001E
2	Direction and distance from (city)	3.5 NM NNE from Den Burg.
3	Elevation/reference temperature	2 FT AMSL/19.5°C.
4	Geoid undulation at AD ELEV PSN	Not AVBL.
5	MAG VAR/annual change	2°E(2020)/10°E.
6	AD operator, postal address, telephone, telefax, email, AFS, website	Post: Texel Airport Ltd. Postweg 120 1795 JS De Cocksdorp, Texel The Netherlands Tel: +31 (0)222 311267 Email: info@texelairport.nl URL: https://www.texelairport.nl
7	Types of traffic permitted (IFR/VFR)	VFR
8	Remarks	1. Aerodrome available for national and international civil air traffic with all types of aircraft up to 6000 KG AUW and gliders. 2. Aerodrome authority can admit aircraft with higher AUW.

**EHTX AD 2.3 OPERATIONAL HOURS**

1	AD operator	MON-SAT: 0800-1800 (0700-1700), SUN and HOL: 0900-1800 (0800-1700) or end of UDP, whichever is earlier. Outside AD OPR HR: O/R.
2	Customs and immigration	Customs: AD OPR HR, 2 HR PN <sup>1)</sup> . Immigration: AD OPR HR, 2 HR PN <sup>1)</sup> .
3	Health and sanitation	NA
4	AIS briefing office	H24 Tel: +31 (0)20 406 2315 URL: https://www.homebriefing.nl
5	ATS reporting office (ARO)	Competent ATS unit: ARO Schiphol, see EHAM AD 2.3.
6	MET briefing office	Self briefing, AD OPR HR.
7	ATS	NA
8	Fuelling	AD OPR HR.
9	Handling	NA
10	Security	NA
11	De-icing	NA
12	Remarks	<sup>1)</sup> PN means permission from and/or in case of customs etc. notification other than by (VFR) flight plans to aerodrome authority as appropriate.

**EHTX AD 2.4 HANDLING SERVICES AND FACILITIES**

1	Cargo-handling facilities	NIL
2	Fuel/oil types	AVGAS 100LL, Jet A-1, Mogas Euro 98 / -.
3	Fuelling facilities/capacity	AVGAS 100LL: 50 000 litres, Jet A-1: 50 000 litres, Mogas Euro 98: 500 litres.
4	De-icing facilities	NIL

5	Hangar space for visiting aircraft	Limited AVBL.
6	Repair facilities for visiting aircraft	AVBL O/R.
7	Remarks	NIL

### EHTX AD 2.5 PASSENGER FACILITIES

1	Hotels	10 rooms at the aerodrome. Sufficient accommodation in Den Burg and De Koog.
2	Restaurants	At the aerodrome.
3	Transportation	Taxi (on request), bus and bicycle.
4	Medical facilities	First aid AVBL.
5	Bank and post office	AVBL in Den Burg.
6	Tourist office	AVBL in Den Burg.
7	Remarks	NIL

### EHTX AD 2.6 RESCUE AND FIRE FIGHTING SERVICES

1	AD category for fire fighting	CAT 3.
2	Rescue equipment	2 fire trucks.
3	Capability for removal of disabled aircraft	Limited AVBL.
4	Remarks	NIL

### EHTX AD 2.9 SURFACE MOVEMENT GUIDANCE AND CONTROL SYSTEM AND MARKINGS

1	Use of aircraft stand ID signs, TWY guide lines and visual docking/parking guidance system at aircraft stands	NIL
2	RWY and TWY markings and LGT	<p><b>RWY markings</b></p> <ul style="list-style-type: none"> <li>white cones.</li> <li>black/white markers.</li> <li>take-off position orange cones.</li> </ul> <p><b>RWY LGT</b></p> <ul style="list-style-type: none"> <li>runway threshold identification lights (FLG W, weather depending).</li> </ul> <p><b>TWY markings</b></p> <ul style="list-style-type: none"> <li>blue cones.</li> </ul> <p><b>TWY LGT</b></p> <ul style="list-style-type: none"> <li>NIL</li> </ul>
3	Stop bars	NIL
4	Remarks	NIL

### EHTX AD 2.10 AERODROME OBSTACLES

For obstacles at and in the vicinity of the aerodrome see AD 2.EHTX-ADC.

### EHTX AD 2.12 RUNWAY PHYSICAL CHARACTERISTICS

Designations RWY NR	True BRG	Dimensions of RWY (M)	Strength (PCN) and sur- face of RWY and SWY	THR co-ordinates RWY end co-ordinates THR GUND	THR elevation and highest elevation of TDZ of precision APCH RWY
1	2	3	4	5	6
03	036°	1109 x 40	6000 KG <sup>(1)2)3)</sup> grass	Not AVBL	NA
21	216°	1109 x 40	6000 KG <sup>(1)2)3)</sup> grass	Not AVBL	NA
12	126°	592 x 30	6000 KG <sup>(1)2)3)</sup> grass	Not AVBL	NA
30	306°	592 x 30	6000 KG <sup>(1)2)3)</sup> grass	Not AVBL	NA

Designations RWY NR	Slope of RWY- SWY	SWY dimensions (M)	CWY dimensions (M)	Strip dimensions (M)	RESA dimensions (M)	Location and type of arresting system	OFZ
1	7	8	9	10	11	12	13
03	NA	NA	60 x 80	1169 x 80	30 x 80	NIL	NA
21	NA	NA	60 x 80	1169 x 80	30 x 80	NIL	NA
12	NA	NA	30 x 60	622 x 60	30 x 60	NIL	NA
30	NA	NA	30 x 60	622 x 60	30 x 60	NIL	NA

## Remarks

14

- <sup>1)</sup> Bearing strength.  
<sup>2)</sup> MAX tyre pressure 0.56 MPa.  
<sup>3)</sup> When surface conditions so permit, the aerodrome manager can admit aircraft with a higher AUW and a higher tyre pressure.

## EHTX AD 2.13 DECLARED DISTANCES

RWY Designator	TORA (M)	TODA (M)	ASDA (M)	LDA (M)	Remarks
1	2	3	4	5	6
03	1109	1169	1109	1049	DTHR 60 M. For take-off line up BTN orange cones.
21	1109	1169	1109	1049	DTHR 60 M. For take-off line up BTN orange cones.
12	592	622	592	562	DTHR 30 M. For take-off line up BTN orange cones.
30	592	622	592	562	DTHR 30 M. For take-off line up BTN orange cones.

## EHTX AD 2.15 OTHER LIGHTING, SECONDARY POWER SUPPLY

1	ABN/IBN location, characteristics and hours of operation	Information not AVBL.
2	LDI location and LGT Anemometer location and LGT	LDI and anemometer: 60 M N from helicopter parking area.
3	TWY edge and centre line lighting	NIL
4	Secondary power supply Switch-over time	NIL
5	Remarks	NIL

## EHTX AD 2.16 HELICOPTER LANDING AREA

1	Co-ordinates TLOF or THR of FATO Geoid undulation	NIL
2	TLOF and/or FATO elevation m/ft	NIL
3	TLOF and FATO area dimensions, surface, strength, marking	NIL
4	True BRG of FATO	NIL
5	Declared distances available	NIL
6	APCH and FATO lighting	NIL
7	Remarks	Helicopter parking area 400 M N from THR RWY 03, lighted.

## EHTX AD 2.17 ATS AIRSPACE

1	Designation and lateral limits	NA
2	Vertical limits	NA
3	Airspace classification	G

4	ATS unit call sign Language(s)	NA
5	Transition altitude	IFR: 3000 FT AMSL; VFR: 3500 FT AMSL.
6	Hours of applicability	NA
7	Remarks	NIL

**EHTX AD 2.18 ATS COMMUNICATION FACILITIES**

Service designation	Call sign	Channel/ Frequency (MHz)	Hours of operation	Remarks
1	2	3	4	5
Aerodrome information	Texel Radio	119.305	See EHTX AD 2.3	NIL

## EHTX AD 2.22 FLIGHT PROCEDURES

### 1 VFR FLIGHT PROCEDURES AND REGULATIONS

**Note:** for visual approach chart and traffic circuits see AD 2.EHTX-VAC.1, AD 2.EHTX-VAC.2 and AD 2.EHTX-VAC.3.

1. The minimum approach altitude is 1500 FT AMSL.
2. The circuit altitude is 1000 FT AMSL.
3. The visual traffic circuit must be carried out within the lateral limits of the circuit area associated with the runway in use.
4. Joining and leaving the circuit shall take place in accordance with the rules of the standard circuit (see ENR 1.2 paragraph 8), except as described for the following runways:
  - **RWY 03:** after take-off climb to 1000 FT on runway heading and leave the circuit as indicated in the chart.
  - **RWY 21:** after take-off climb on runway heading. At orange circuit marker make lefthand turn to crosswind and leave the circuit as indicated in the chart.
  - **RWY 30:** leave the circuit as indicated in the chart.
5. The circuit area may not be overflown below an altitude of 1500 FT AMSL.
6. For motorised civil air traffic above the natural area Waddenzee the following applies:
  - a. flights below 1500 FT AGL are not allowed;
  - b. when ceiling < 1500 FT AGL or flight visibility < 8 KM, flights between 1000 FT AGL and 1500 FT AGL are allowed within the corridors depicted on chart ENR 6-5.3 (see ENR 5.6 paragraph 2).
  - c. If weather conditions permit, pass the Texel coast at 1500 FT AMSL or above.
  - d. Descend to circuit altitude after passing the villages Oosterend and Oost.
7. Built-up areas and dunes shall be avoided as much as possible.
8. Marked areas must be avoided.

### 2 SEASONAL ARRIVAL AND DEPARTURE PROCEDURES

Yearly from 01 April until 01 October, seasonal arrival and departure procedures will be in force on saturday, sunday and public holidays (see AIP GEN 2.1).

1. For these procedures the following limits apply: visibility  $\geq$  5 KM and ceiling  $\geq$  1500 FT AGL. Below these limits the normal circuit procedures are applicable.
2. Approaches to the aerodrome shall be made at 1500 FT AMSL.
3. Circuit altitude is 1000 FT AMSL.
4. Two-way radio contact on 119.305.
5. During OPR HR De Kooy TWR request for crossing clearance De Kooy CTR.
6. Built-up and shaded areas shall be avoided as much as possible.
7. Parachute jumping may take place.
8. Be aware of circuit training flights during the weekend.
9. Reporting points:
  - Point A: 3 NM SE of Oosterend.
  - Point B: 2 NM SW of Oosterend.
  - Point C: 4 NM SW of threshold RWY 03.
  - Point D: Coast 2 NM NE of Oosterend.
  - Point E: 3 NM NE of threshold RWY 21.

#### 2.1 Arrival RWY 03/21

**Note:** for visual arrival chart and traffic circuits RWY 03/21, see AD 2.EHTX-VAC.2.

1. Pilots are requested to report over the reporting points mentioned hereafter, including final.
2. RWY 03, arriving from SE:
  - Report over point A at 1500 FT AMSL.
  - Proceed direct to point B; past B execute a continuous descent to final RWY 03.
3. RWY 03, arriving from SW:
  - Report over point C at 1500 FT AMSL.
  - Start the descent for final RWY 03.
4. RWY 21, arriving from SE (and De Kooy):
  - Report over point A at 1500 FT AMSL.
  - Proceed via coastline to point D.
  - Turn left on a direct left hand base leg and execute a continuous descent to final RWY 21.
5. RWY 21 arriving from NE:
  - Report over point E at 1500 FT AMSL.
  - Stay well clear of built-up area (De Cocksdorp).
  - Proceed direct for a straight-in RWY 21.

#### 2.2 Departure RWY 03/21

**Note:** for visual departure chart and traffic circuits RWY 03/21, see AD 2.EHTX-VAC.3.

1. Reporting points are on request.
2. RWY 03, departing to the NE:
  - Climb on runway heading to 1500 FT AMSL.
  - Avoid built-up areas.
3. RWY 03, departing to the SE:

- Climb on runway heading to 1200 FT AMSL.
  - Make a climbing right turn out to 1500 FT AMSL.
  - Avoid built-up areas.
4. RWY 21, departing to the SW:
- Climb on runway heading to 1500 FT AMSL.
  - Avoid built-up areas , especially Den Burg.
  - Contact De Kooy TWR for crossing the CTR.
5. RWY 21, departing to the SE:
- Climb on runway heading to 1000 FT AMSL.
  - Make a climbing left turn out to 1500 FT AMSL or above.
  - Avoid the built-up areas.

**2.3 Arrival RWY 12/30**

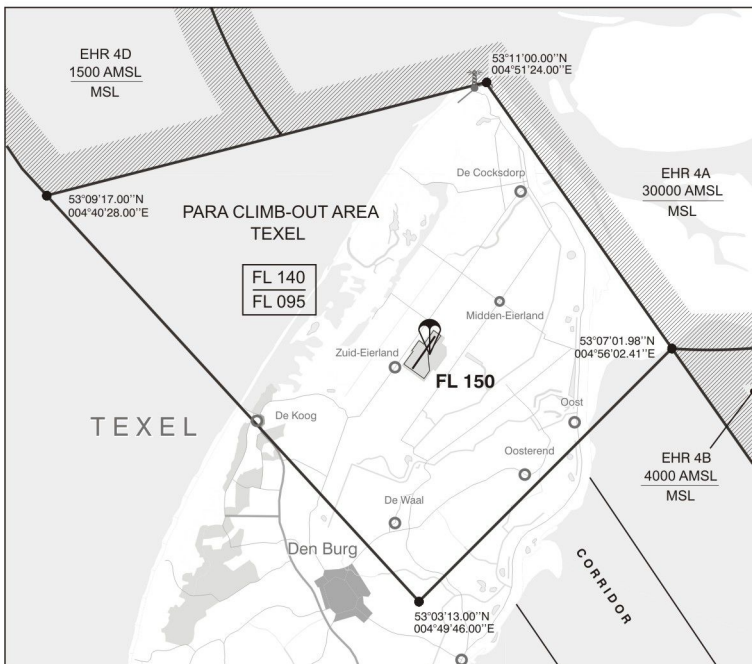
- Proceed to the aerodrome at 1500 FT AMSL or above.
- Avoid built-up areas.
- Join the standard circuit procedure.
- Circuit altitude is 1000 FT AMSL.

**EHTX AD 2.23 ADDITIONAL INFORMATION**

**1 CAUTIONS AND ADDITIONAL INFORMATION**

1. Parachute jumping may take place as stated in ENR 5.5 and/or as promulgated by NOTAM.
2. To accommodate parachute jumping from MAX FL 140 the para climb-out area Texel is established in EHTRA 10.

Area	Lateral Limits	Upper limit Lower limit
Para climb-out area Texel	530917.00N 0044028.00E; 531100.00N 0045124.00E; 530701.98N 0045602.41E; 530313.00N 0044946.00E; 530917.00N 0044028.00E.	FL 140 FL 095

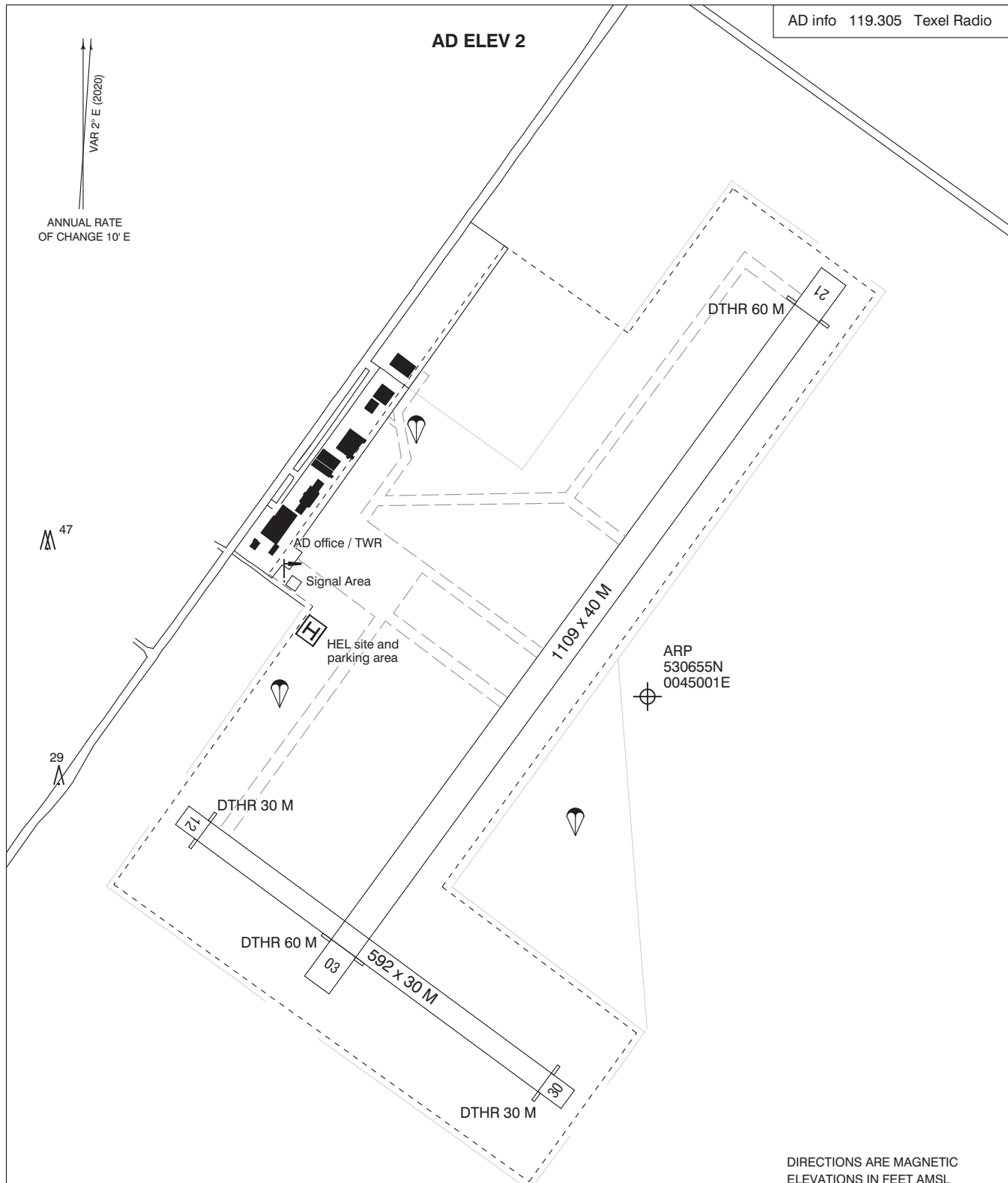


3. Grass cutting may take place at irregular times.

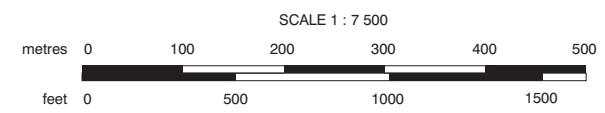
**EHTX AD 2.24 CHARTS RELATED TO AN AERODROME**

Type of chart	Page
Aerodrome chart	AD 2.EHTX-ADC
Visual approach chart/VFR procedures	AD 2.EHTX-VAC.1
Seasonal VFR arrival procedures RWY 03/21	AD 2.EHTX-VAC.2
Seasonal VFR departure procedures RWY 03/21	AD 2.EHTX-VAC.3

AD info 119.305 Texel Radio



DIRECTIONS ARE MAGNETIC  
ELEVATIONS IN FEET AMSL  
DIMENSIONS IN METRES



PHYSICAL CHARACTERISTICS		BEARING STRENGTH		
RWY	DIRECTION	MAX A UW*	MAX TYRE PRESS*	SURFACE
03	034°	6000 KG	0.56 MPa	GRASS
21	214°	6000 KG	0.56 MPa	GRASS
12	124°	6000 KG	0.56 MPa	GRASS
30	304°	6000 KG	0.56 MPa	GRASS

\* When surface conditions so permit, the aerodrome manager can admit aircraft with a higher A UW and a higher tyre pressure.

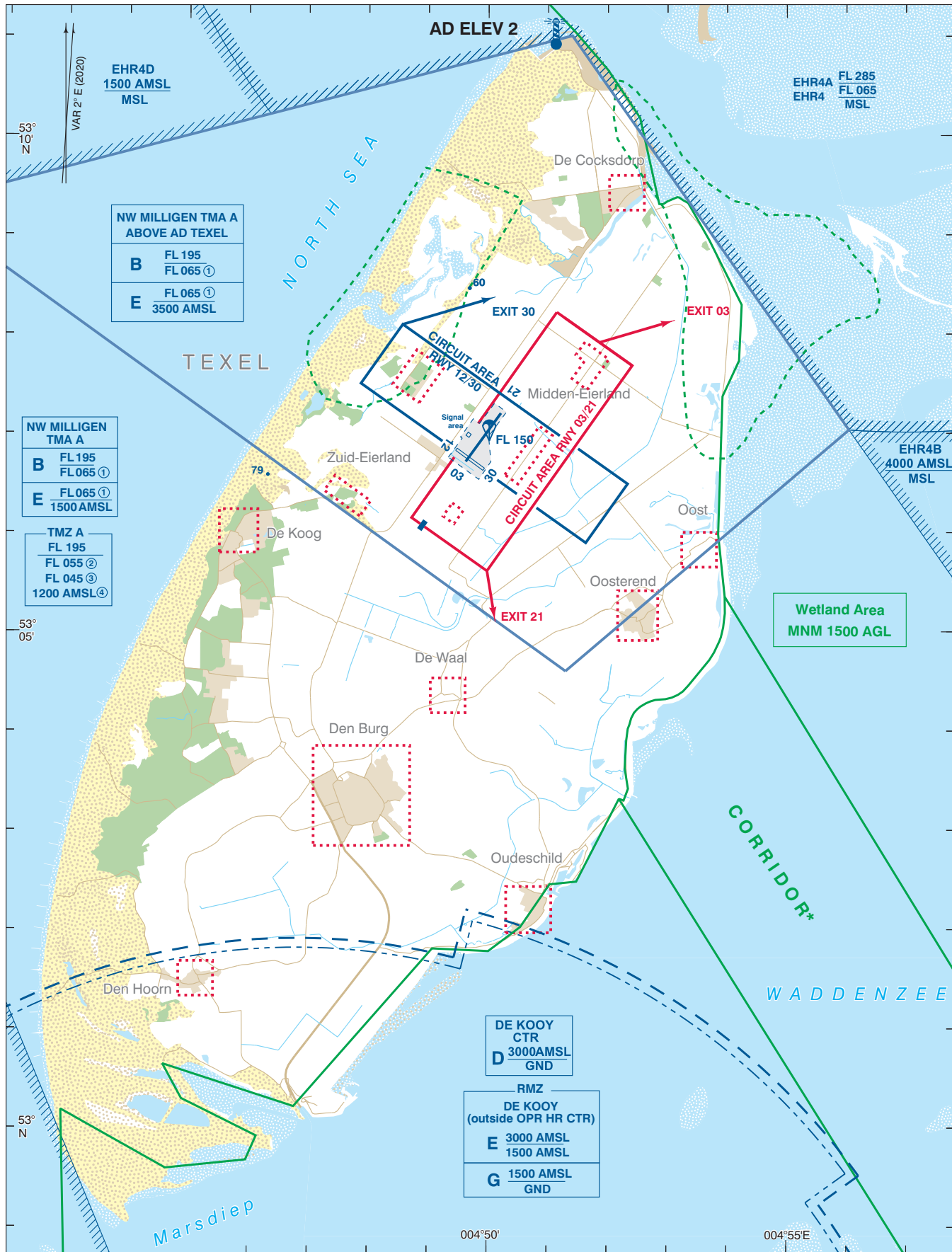
**LIGHTING AIDS**  
RWY: THR identification lights (FLG W, weather depending).  
HEL-site: Lighted.

**MARKING AIDS**  
RWY: White cones; start position orange cones.  
TWY: Blue cones.

**CAUTION**  
Grass cutting may take place at irregular times.







NW MILLIGEN TMA A ABOVE AD TEXEL	
B	FL 195 FL 065 ①
E	FL 065 ① 3500 AMSL

NW MILLIGEN TMA A	
B	FL 195 FL 065 ①
E	FL 065 ① 1500 AMSL

TMZ A	
FL 195	
FL 055 ②	
FL 045 ③	
1200 AMSL ④	

DE KOOY CTR	
D	3000 AMSL GND

RMZ DE KOOY (outside OPR HR CTR)	
E	3000 AMSL 1500 AMSL
G	1500 AMSL GND

**For description VFR - procedures see EHTX AD 2.22.**

**NOTES:**

① During weekends FRI 1600 - SUN 2300 (FRI 1500 - SUN 2200 summertime) and HOL classified E up to and including FL 095.

TMZ A:

② MON-FRI before 0800 (0700) and after 1600 (1500), SAT, SUN and HOL.

③ MON-FRI 0800-1600 (0700-1500), EXCL HOL: lower limit for non-motorised hanggliders and paragliders.

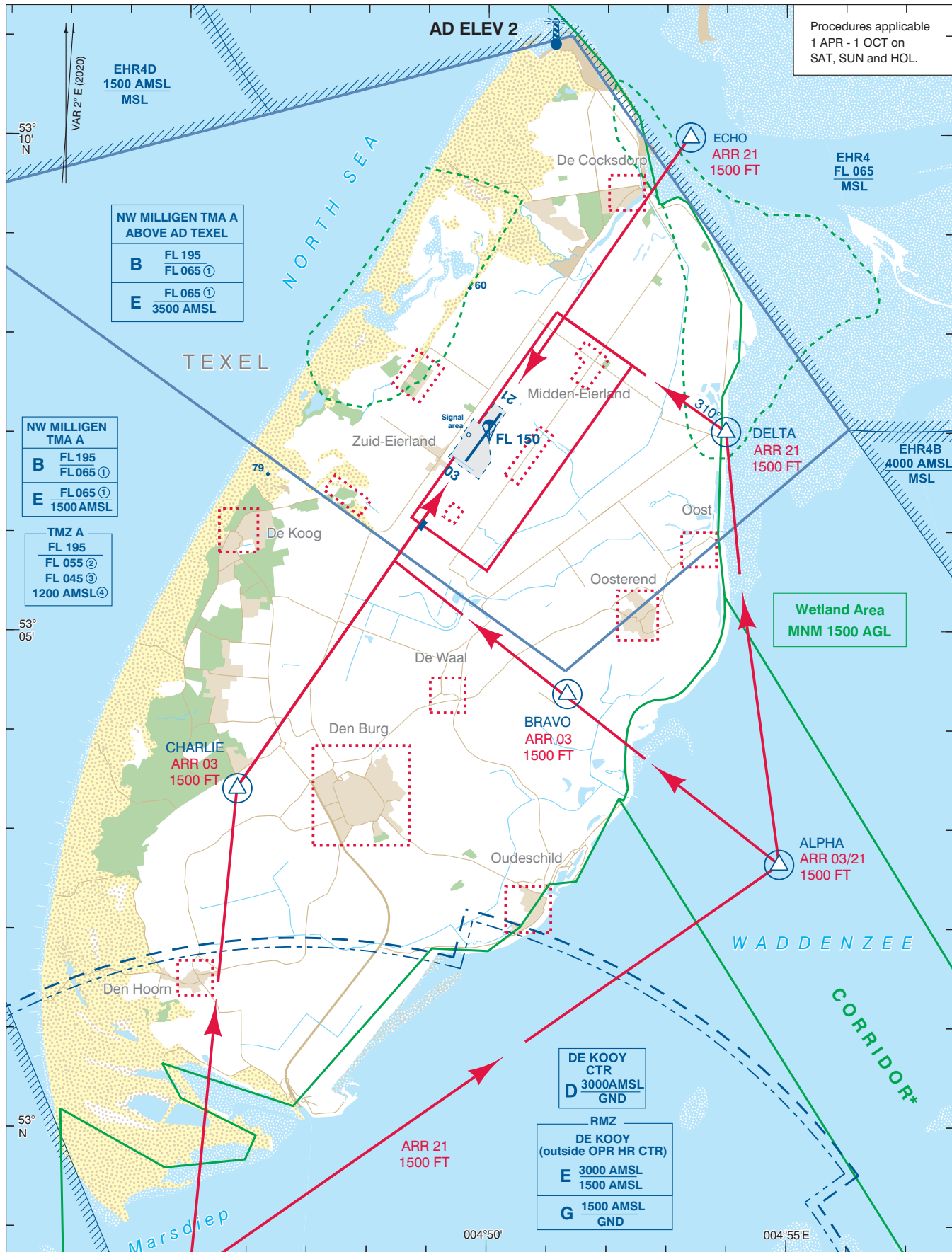
④ MON-FRI 0800-1600 (0700-1500), EXCL HOL: lower limit 1200 AMSL

\*For motorised civil air traffic above the natural area Waddenzee the following applies:

- flights below 1500 FT AGL are not allowed.
- when ceiling < 1500 FT AGL or flight visibility < 8 KM, flights between 1000 FT AGL and 1500 FT AGL are allowed within the corridors.

AD Info	119.305	Texel Radio
FIC (MIL)	132.350	Dutch MIL Info
<ul style="list-style-type: none"> <li>① Area to be avoided</li> <li>② Wetland Area</li> <li>③ Bird sanctuary (GND/MSL - 1000 FT AMSL)</li> </ul>		DIRECTIONS ARE MAGNETIC DISTANCES IN NM ALTITUDES AND ELEVATIONS IN FEET AMSL
SCALE 1 : 100 000 KM 0 1 2 3 NM 0 1 2		





Procedures applicable  
1 APR - 1 OCT on  
SAT, SUN and HOL.

NW MILLIGEN TMA A  
ABOVE AD TEXEL

**B** FL 195  
FL 065 ①

**E** FL 065 ①  
3500 AMSL

NW MILLIGEN TMA A

**B** FL 195  
FL 065 ①

**E** FL 065 ①  
1500 AMSL

TMZ A

FL 195

FL 055 ②

FL 045 ③

1200 AMSL ④

DE KOOY CTR  
**D** 3000AMSL  
GND

RMZ  
DE KOOY  
(outside OPR HR CTR)

**E** 3000 AMSL  
1500 AMSL

**G** 1500 AMSL  
GND

**For description VFR - procedures see EHTX AD 2.22.**

**NOTES:**

① During weekends FRI 1600 - SUN 2300 (FRI 1500 - SUN 2200 summertime) and HOL classified E up to and including FL 095.

TMZ A:

② MON-FRI before 0800 (0700) and after 1600 (1500), SAT, SUN and HOL.

③ MON-FRI 0800-1600 (0700-1500), EXCL HOL: lower limit for non-motorised hanggliders and paragliders.

④ MON-FRI 0800-1600 (0700-1500), EXCL HOL: lower limit 1200 AMSL

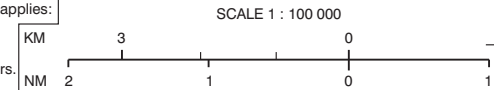
\* For motorised civil air traffic above the natural area Waddenzee the following applies:

- flights below 1500 FT AGL are not allowed.
- when ceiling < 1500 FT AGL or flight visibility < 8 KM, flights between 1000 FT AGL and 1500 FT AGL are allowed within the corridors.

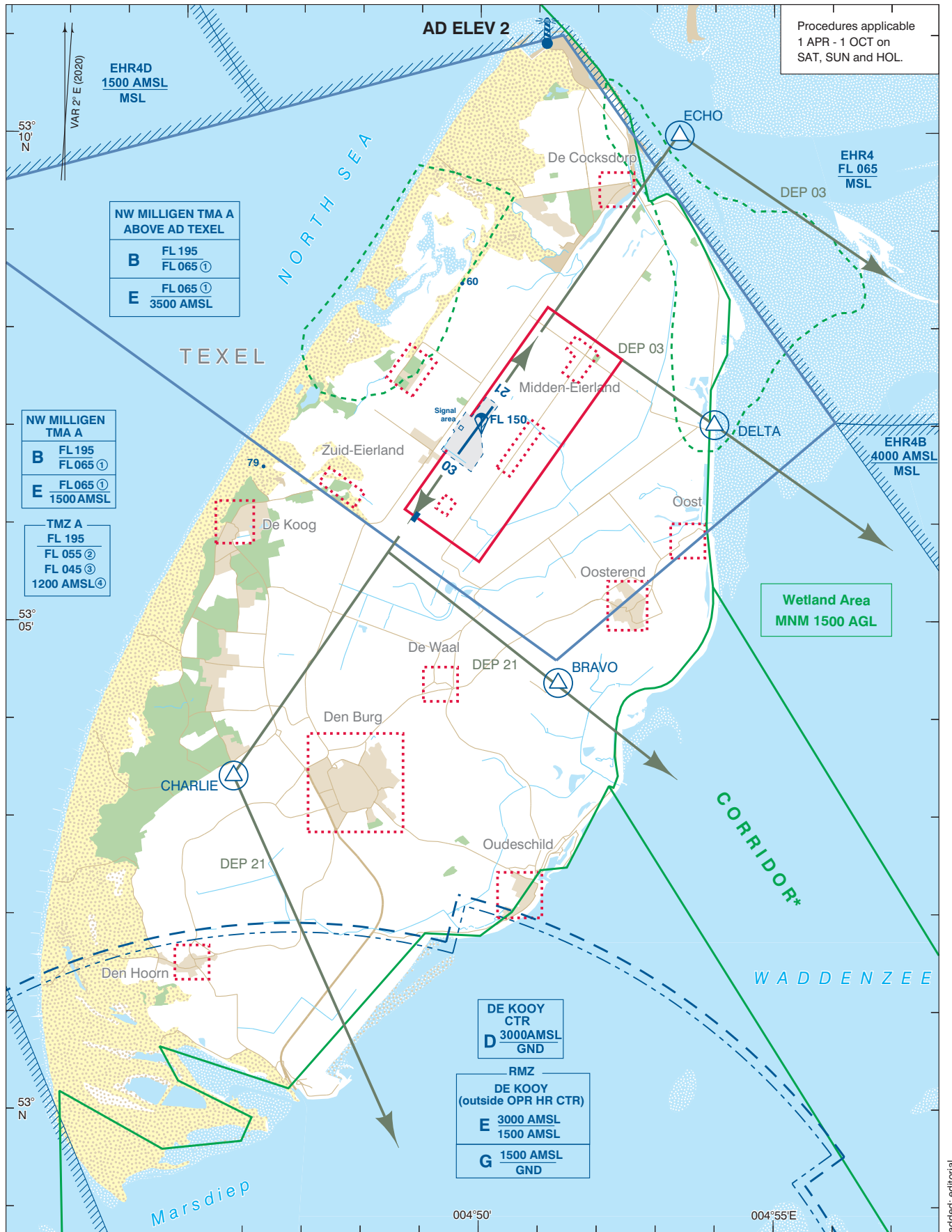
➔ Arrival route  
⊙ On request fly-over reporting point  
⋯ Area to be avoided  
▭ Wetland Area  
▭ Bird sanctuary (GND/MSL - 1000 FT AMSL)  
■ Visual circuit marker (orange coloured)

AD Info 119.305 Texel Radio  
FIC (MIL) 132.350 Dutch MIL Info

DIRECTIONS ARE MAGNETIC  
DISTANCES IN NM  
ALTITUDES AND ELEVATIONS  
IN FEET AMSL







Procedures applicable  
1 APR - 1 OCT on  
SAT, SUN and HOL.

NW MILLIGEN TMA A  
ABOVE AD TEXEL

B	FL 195 FL 065 ①
E	FL 065 ① 3500 AMSL

NW MILLIGEN TMA A

B	FL 195 FL 065 ①
E	FL 065 ① 1500 AMSL

TMZ A

FL 195
FL 055 ②
FL 045 ③
1200 AMSL ④

DE KOOY CTR  
D 3000 AMSL  
GND

RMZ  
DE KOOY (outside OPR HR CTR)

E	3000 AMSL 1500 AMSL
G	1500 AMSL GND

**For description VFR - procedures see EHTX AD 2.22.**

**NOTES:**

① During weekends FRI 1600 - SUN 2300 (FRI 1500 - SUN 2200 summertime) and HOL classified E up to and including FL 095.

**TMZ A:**

② MON-FRI before 0800 (0700) and after 1600 (1500), SAT, SUN and HOL.  
③ MON-FRI 0800-1600 (0700-1500), EXCL HOL: lower limit for non-motorised hanggliders and paragliders.  
④ MON-FRI 0800-1600 (0700-1500), EXCL HOL: lower limit 1200 AMSL

\* For motorised civil air traffic above the natural area Waddenzee the following applies:

- flights below 1500 FT AGL are not allowed.
- when ceiling < 1500 FT AGL or flight visibility < 8 KM, flights between 1000 FT AGL and 1500 FT AGL are allowed within the corridors.

- ➔ Departure route
- ⊙ On request reporting point fly-over
- ⋯ Area to be avoided
- ▭ Wetland Area
- ▭ Bird sanctuary (GND/MSL - 1000 FT AMSL)
- Visual circuit marker (orange coloured)

AD Info 119.305 Texel Radio  
FIC (MIL) 132.350 Dutch MIL Info

DIRECTIONS ARE MAGNETIC  
DISTANCES IN NM  
ALTITUDES AND ELEVATIONS  
IN FEET AMSL

