

**EHTL — TERLET**

Note: the following sections in this chapter are intentionally left blank:

AD 2.4, AD 2.5, AD 2.6, AD 2.7, AD 2.8, AD 2.11, AD 2.12, AD 2.13, AD 2.14, AD 2.15, AD 2.16, AD 2.19, AD 2.20, AD 2.21, AD 2.22.

**EHTL AD 2.1 AERODROME LOCATION INDICATOR AND NAME**

EHTL — TERLET

**EHTL AD 2.2 AERODROME GEOGRAPHICAL AND ADMINISTRATIVE DATA**

1	ARP co-ordinates and site at AD	520326N 0055528E Midpoint between landing strips.
2	Direction and distance from (city)	2.5 NM north of Arnhem.
3	Elevation/reference temperature	276 FT AMSL (84 M)/Not AVBL.
4	Geoid undulation at AD ELEV PSN	Not AVBL.
5	MAG VAR/annual change	2°E (2020)/9'E.
6	AD operator, postal address, telephone, telefax, email, AFS, website	Post: Stichting Nationaal Zweefvliegcentrum Terlet Apeldoornseweg 203 6816 SM Arnhem Tel: +31 (0)6 1489 8818 +31 (0)6 1317 3525 (during OPR HR) Email: havenmeester@terlet.nl URL: http://www.terlet.nl
7	Types of traffic permitted (IFR/VFR)	VFR
8	Remarks	Aerodrome available for use by national civil air traffic with gliders, motor gliders and tugs. Flights between EHTL and Schengen Treaty countries permitted. Winch and tow starts.

**EHTL AD 2.3 OPERATIONAL HOURS**

1	AD operator	HO; for actual OPR HR contact airport authority (see EHTL AD 2.2).
2	Customs and immigration	NIL
3	Health and sanitation	NIL
4	AIS briefing office	H24 Tel: +31 (0)20 406 2315 URL: https://www.homebriefing.nl
5	ATS reporting office (ARO)	NIL
6	MET briefing office	NIL
7	ATS	NIL
8	Fuelling	NIL
9	Handling	NIL
10	Security	NIL
11	De-icing	NIL
12	Remarks	NIL

**EHTL AD 2.9 SURFACE MOVEMENT GUIDANCE AND CONTROL SYSTEM AND MARKINGS**

1	Use of aircraft stand ID signs, TWY guide lines and visual docking/parking guidance system at aircraft stands	NIL
2	RWY and TWY markings and LGT	For gliders landing area 75 x 30 M; marked. 6 winch launching tracks, MNM 550 M and MAX 1100 M. For motor gliders a strip for take-off and landing (T-strip). PPR only.
3	Stop bars	NIL

4	Remarks	NIL
---	---------	-----

### EHTL AD 2.10 AERODROME OBSTACLES

For obstacles at and in the vicinity of the aerodrome see AD 2.EHTL-ADC.

### EHTL AD 2.17 ATS AIRSPACE

1	Designation and lateral limits	NA
2	Vertical limits	NA
3	Airspace classification	D <sup>1)</sup>
4	ATS unit call sign Language(s)	NA
5	Transition altitude	IFR: 3000 FT AMSL; VFR: 3500 FT AMSL.
6	Hours of applicability	NA
7	Remarks	<sup>1)</sup> Terlet AD is situated in Deelen CTR (MIL, see ENR 2.1 for description).

### EHTL AD 2.18 ATS COMMUNICATION FACILITIES

Service designation	Call sign	Channel(s)	SATVOICE NR	Logon address	Hours of operation	Remarks
1	2	3	4	5	6	7
Aerodrome information	Terlet Radio	130.130	INFO not AVBL	INFO not AVBL	See EHTL AD 2.3	AD Info and traffic on T-strip.
		123.380	INFO not AVBL	INFO not AVBL	See EHTL AD 2.3	Traffic on secondary strips during weekends.
TWR	Deelen Tower	129.930	INFO not AVBL	INFO not AVBL	HO	NIL

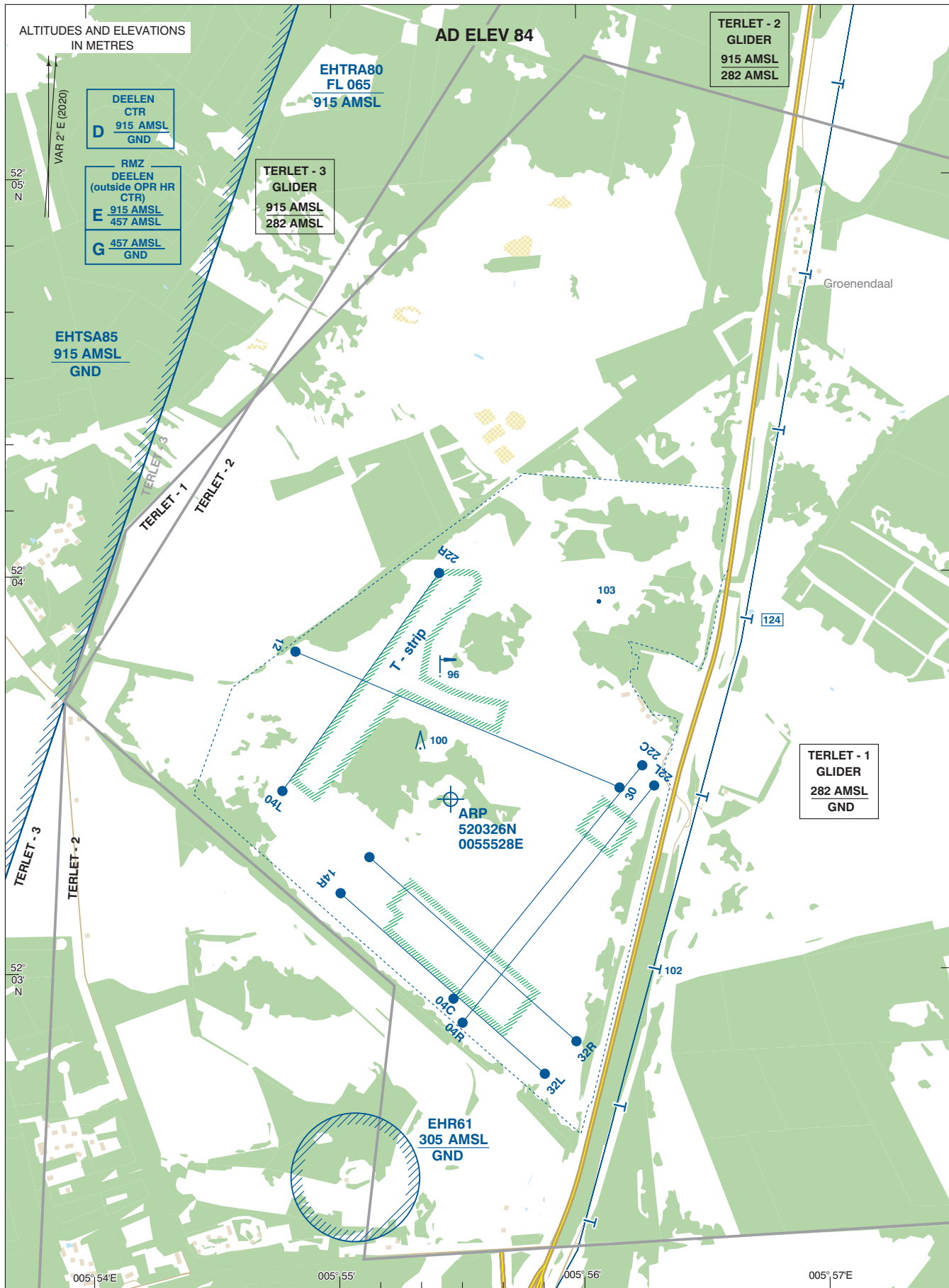
### EHTL AD 2.23 ADDITIONAL INFORMATION

#### 1 CAUTION AND ADDITIONAL INFORMATION




- Maximum height for releasing launching cable is 700 M / 2300 FT AAL (784 M / 2576 FT AMSL).
- Activation of area Terlet 1, 2 and 3 see ENR 1.2 paragraph 3.2.6.2.

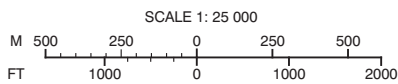
### EHTL AD 2.24 CHARTS RELATED TO AN AERODROME

Type of chart	Page
Aerodrome chart	AD 2.EHTL-ADC
Visual approach chart/VFR procedures	AD 2.EHTL-VAC



For additional information see EHTL AD 2.23.

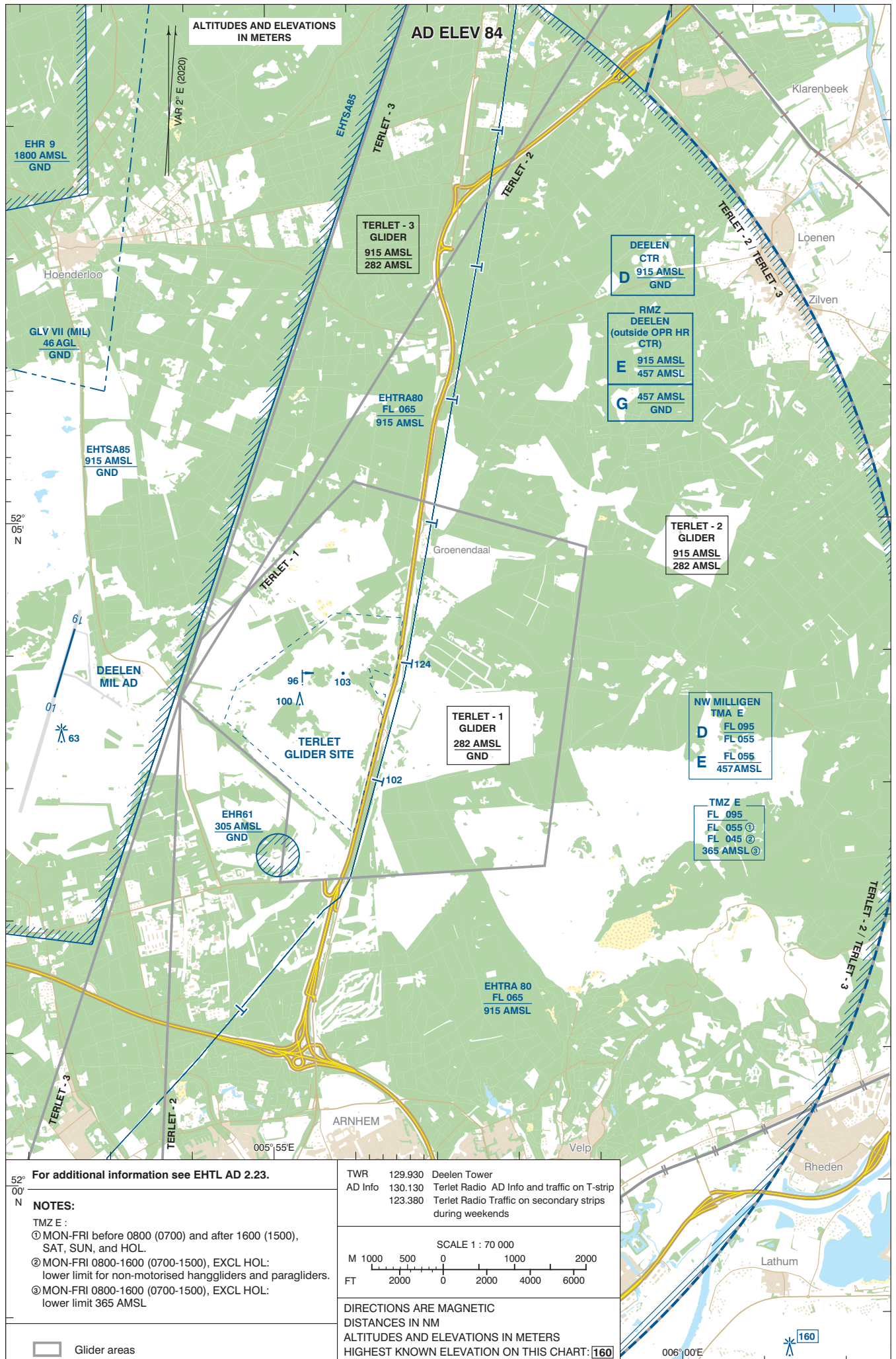
-  Landing strip/grass
-  Winch launching track
-  Glider areas



DIRECTIONS ARE MAGNETIC  
DISTANCES IN NM  
ALTITUDES AND ELEVATIONS  
IN METRES  
HIGHEST KNOWN ELEVATION  
ON THIS CHART: **124**

TWR	129.930	Deelen Tower	
AD Info	130.130	Terlet Radio	AD Info and traffic on T-strip
	123.380	Terlet Radio	Traffic on secondary strips during weekends





52° 00' N

**For additional information see EHTL AD 2.23.**

**NOTES:**

TMZ E :

① MON-FRI before 0800 (0700) and after 1600 (1500), SAT, SUN, and HOL.

② MON-FRI 0800-1600 (0700-1500), EXCL HOL: lower limit for non-motorised hanggliders and paragliders.

③ MON-FRI 0800-1600 (0700-1500), EXCL HOL: lower limit 365 AMSL

□ Glider areas

TWR	129.930	Deelen Tower
AD Info	130.130	Terlet Radio AD Info and traffic on T-strip
	123.380	Terlet Radio Traffic on secondary strips during weekends

SCALE 1 : 70 000

M 1000 500 0 1000 2000

FT 2000 0 2000 4000 6000

DIRECTIONS ARE MAGNETIC  
DISTANCES IN NM  
ALTITUDES AND ELEVATIONS IN METERS  
HIGHEST KNOWN ELEVATION ON THIS CHART: 160



CHANGE: lower limit glider area TERLET - 2; editorial.

