

EHHO — HOOGEVEEN/Hoogeveen

Note: the following sections in this chapter are intentionally left blank:
AD 2.7, AD 2.11, AD 2.14, AD 2.16, AD 2.19, AD 2.20, AD 2.21.

EHHO AD 2.1 AERODROME LOCATION INDICATOR AND NAME

EHHO — HOOGEVEEN/Hoogeveen

EHHO AD 2.2 AERODROME GEOGRAPHICAL AND ADMINISTRATIVE DATA

1	ARP co-ordinates and site at AD	524351N 0063058E
2	Direction and distance from (city)	0.6 NM NE from Hoogeveen.
3	Elevation/reference temperature	40 FT AMSL/20.7°C.
4	Geoid undulation at AD ELEV PSN	Not AVBL.
5	MAG VAR/annual change	2°E (2020)/9°E.
6	AD operator, postal address, telephone, telefax, email, AFS, website	Post: Stichting Vliegveld Hoogeveen Plesmanstraat 2 7903 BE Hoogeveen The Netherlands Tel: +31 (0)528 266 640 Email: info@ehho.nl
7	Types of traffic permitted (IFR/VFR)	VFR
8	Remarks	1. Aerodrome available for national and international civil air traffic with all types of aircraft up to 5000 KG AUW and gliders. 2. Importation and exportation of merchandise, except travellers luggage, not allowed.

EHHO AD 2.3 OPERATIONAL HOURS

1	AD operator	1 APR - 30 SEP: - (0730-1700); 1 OCT - 31 MAR: 0900-1800 (0800-1700) but within UDP. Outside OPR HR by appointment; PN ¹⁾ on preceding day.
2	Customs and immigration	Customs: 0900-1800 (0800-1700) 2 HR PN ¹⁾ , passengers only. Immigrations: NA.
3	Health and sanitation	NA
4	AIS briefing office	H24 Tel: +31 (0)20 406 2315 URL: https://www.homebriefing.nl
5	ATS reporting office (ARO)	Competent ATS unit: ARO Schiphol, see EHAM AD 2.3.
6	MET briefing office	NA
7	ATS	NA
8	Fuelling	Self-service during OPR HR.
9	Handling	NA
10	Security	NA
11	De-icing	NA
12	Remarks	¹⁾ PN means permission from and/or in case of customs etc. notification other than by (VFR) flight plans to aerodrome authority as appropriate.

EHHO AD 2.4 HANDLING SERVICES AND FACILITIES

1	Cargo-handling facilities	NIL
2	Fuel/oil types	Jet A-1, AVGAS 100LL, Mogas 98/-.
3	Fuelling facilities/capacity	Jet A-1: 20 000 litres, 40/80 litres/MIN; AVGAS 100LL: 30 000 litres, 40/80 litres/MIN; Mogas 98: 12 000 litres, 40/80 litres/MIN.
4	De-icing facilities	NIL

5	Hangar space for visiting aircraft	Limited AVBL.
6	Repair facilities for visiting aircraft	AVBL
7	Remarks	NIL

EHHO AD 2.5 PASSENGER FACILITIES

1	Hotels	Accommodation in Hoogeveen.
2	Restaurants	At the aerodrome.
3	Transportation	Taxi (on request).
4	Medical facilities	First aid AVBL.
5	Bank and post office	In Hoogeveen.
6	Tourist office	In Hoogeveen.
7	Remarks	NIL

EHHO AD 2.6 RESCUE AND FIRE FIGHTING SERVICES

1	AD category for fire fighting	CAT 1. CAT 2 AVBL O/R.
2	Rescue equipment	1 fire truck.
3	Capability for removal of disabled aircraft	Limited.
4	Remarks	Arrangements have been made with the local fire brigade.

EHHO AD 2.8 APRONS, TAXIWAYS AND CHECK LOCATIONS/POSITIONS DATA

1	Apron surface and strength	Grass/concrete, 5000 KG.
2	Taxiway width, surface and strength	Width 11 M, grass, 5000 KG.
3	Altimeter checkpoint location and elevation	AVBL
4	VOR checkpoints	NIL
5	INS checkpoints	NIL
6	Remarks	NIL

EHHO AD 2.9 SURFACE MOVEMENT GUIDANCE AND CONTROL SYSTEM AND MARKINGS

1	Use of aircraft stand ID signs, TWY guide lines and visual docking/parking guidance system at aircraft stands	NIL
2	RWY and TWY markings and LGT	RWY: THR, by white markers.
3	Stop bars	NIL
4	Remarks	NIL

EHHO AD 2.10 AERODROME OBSTACLES

For obstacles at and in the vicinity of the aerodrome see AD 2.EHHO-ADC.

EHHO AD 2.12 RUNWAY PHYSICAL CHARACTERISTICS

Designations RWY NR	True BRG	Dimensions of RWY (M)	Strength (PCN) and sur- face of RWY and SWY	THR co-ordinates RWY end co-ordinates THR GUND	THR elevation and highest elevation of TDZ of precision APCH RWY
1	2	3	4	5	6
09	094°	1190 x 24	5000 KG ¹⁾²⁾³⁾ grass	Not AVBL	NA
27	274°	1190 x 24	5000 KG ¹⁾²⁾³⁾ grass	Not AVBL	NA

Designations RWY NR	Slope of RWY-SWY	SWY dimensions (M)	CWY dimen- sions (M)	Strip dimen- sions (M)	RESA dimen- sions (M)	Location and type of arresting system	OFZ
1	7	8	9	10	11	12	13
09	NA	NA	NA	1190 x 150	NIL	NIL	NA

Designations RWY NR	Slope of RWY-SWY	SWY dimensions (M)	CWY dimen- sions (M)	Strip dimen- sions (M)	RESA dimen- sions (M)	Location and type of arresting system	OFZ
1	7	8	9	10	11	12	13
27	NA	NA	NA	1190 x 150	NIL	NIL	NA

Remarks

12

1) Bearing strength.

2) MAX tyre pressure 0.6 MPa.

3) The aerodrome manager can admit aircraft with an AUW of 6000 KG and a higher tyre pressure, surface conditions permitting.

EHHO AD 2.13 DECLARED DISTANCES

RWY Designator	TORA (M)	TODA (M)	ASDA (M)	LDA (M)	Remarks
1	2	3	4	5	6
09	1190	1410	1190	1100	DTHR 90 M.
27	1190	1280	1190	1160	DTHR 30 M.

EHHO AD 2.15 OTHER LIGHTING, SECONDARY POWER SUPPLY

1	ABN/IBN location, characteristics and hours of operation	NIL
2	LDI location and LGT Anemometer location and LGT	LDI and anemometer: S of aerodrome building, unlighted.
3	TWY edge and centre line lighting	NIL
4	Secondary power supply Switch-over time	NIL
5	Remarks	NIL

EHHO AD 2.17 ATS AIRSPACE

1	Designation and lateral limits	NA
2	Vertical limits	NA
3	Airspace classification	G
4	ATS unit call sign Language(s)	NA
5	Transition altitude	IFR: 3000 FT AMSL; VFR: 3500 FT AMSL.
6	Hours of applicability	NA
7	Remarks	NIL

EHHO AD 2.18 ATS COMMUNICATION FACILITIES

Service designation	Call sign	Channel/ Frequency (MHz)	Hours of operation	Remarks
1	2	3	4	5
Aerodrome information	Hoogeveen Radio	127.355	See EHHO AD 2.3	See note EHHO AD 2.22

EHHO AD 2.22 FLIGHT PROCEDURES

1 VFR FLIGHT PROCEDURES AND REGULATIONS

Note: Due to combined operations of VFR traffic and gliders, the use of two-way radio communication with the AD authority is strongly recommended before entering the circuit area or before departing the aerodrome.

Note: VFR traffic circuit areas and traffic circuits see AD 2.EHHO-VAC.

1. The minimum approach altitude is 1040 FT AMSL (1000 FT AAL).
2. The circuit altitude is 740 FT AMSL (700 FT AAL).
3. The visual traffic circuit must be carried out within the lateral limits of the circuit area.
4. Joining and leaving the circuit shall take place in accordance with the rules of the standard circuit (see ENR 1.2 paragraph 8).
5. All traffic, including gliders, report downwind and final. This applies also to pilots without an RTF license.
6. The circuit area may not be overflown below an altitude of 1040 FT AMSL (1000 FT AAL).
7. Built-up areas shall be avoided as much as possible.

EHHO AD 2.23 ADDITIONAL INFORMATION

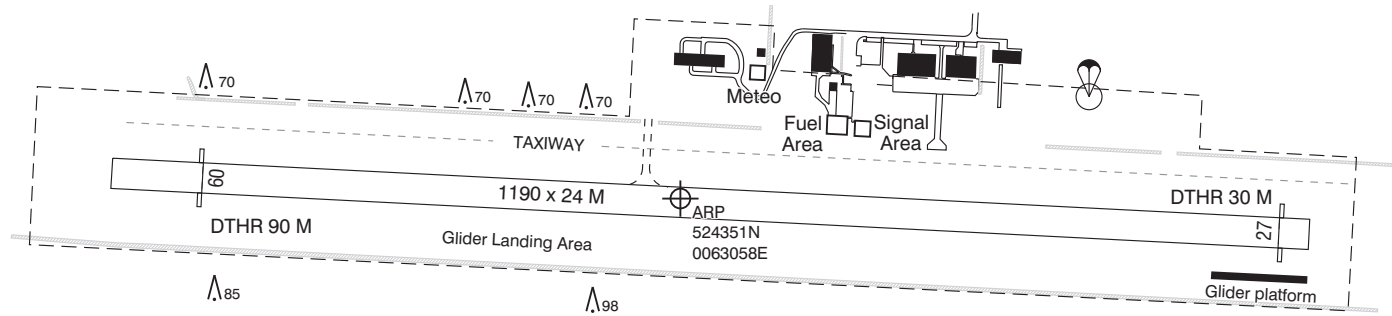
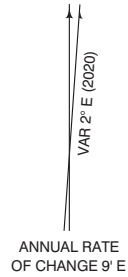
1 CAUTIONS AND ADDITIONAL INFORMATION

1. Glider flying may take place daily.
2. During OPR HR expect glider tow launching, outside OPR HR gliders will be launched by winch. Do not overfly the aerodrome below 2040 FT AMSL.
3. The gliding activities will only take place at the southern part of the aerodrome.
4. White markers separate the aeroplane and glider landing areas.
5. Parachute jumping (over the aerodrome and Echten) may take place as stated in ENR 5.5 and/or as promulgated by NOTAM. A call "para's in one minute" will be broadcast one minute before every dropping of parachute jumpers.
6. For details of the military low flying area GLV II see ENR 5.2.
7. Grass cutting may take place at irregular times.

EHHO AD 2.24 CHARTS RELATED TO AN AERODROME

Type of chart	Page
Aerodrome chart	AD 2.EHHO-ADC
Visual approach chart	AD 2.EHHO-VAC

AD ELEV 40



PHYSICAL CHARACTERISTICS				
RWY	DIRECTION	MAX AUW	MAX TYRE PRESS	SURFACE
09	092°	5000 KG*	0.60 MPa*	GRASS
27	272°	5000 KG*	0.60 MPa*	GRASS

* The AD manager can admit aircraft with an AUW of 6000 KG and a higher tyre pressure, surface conditions permitting.

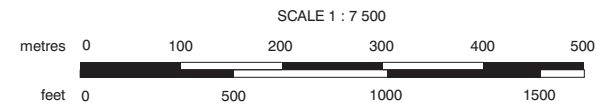
LIGHTING AIDS : none.

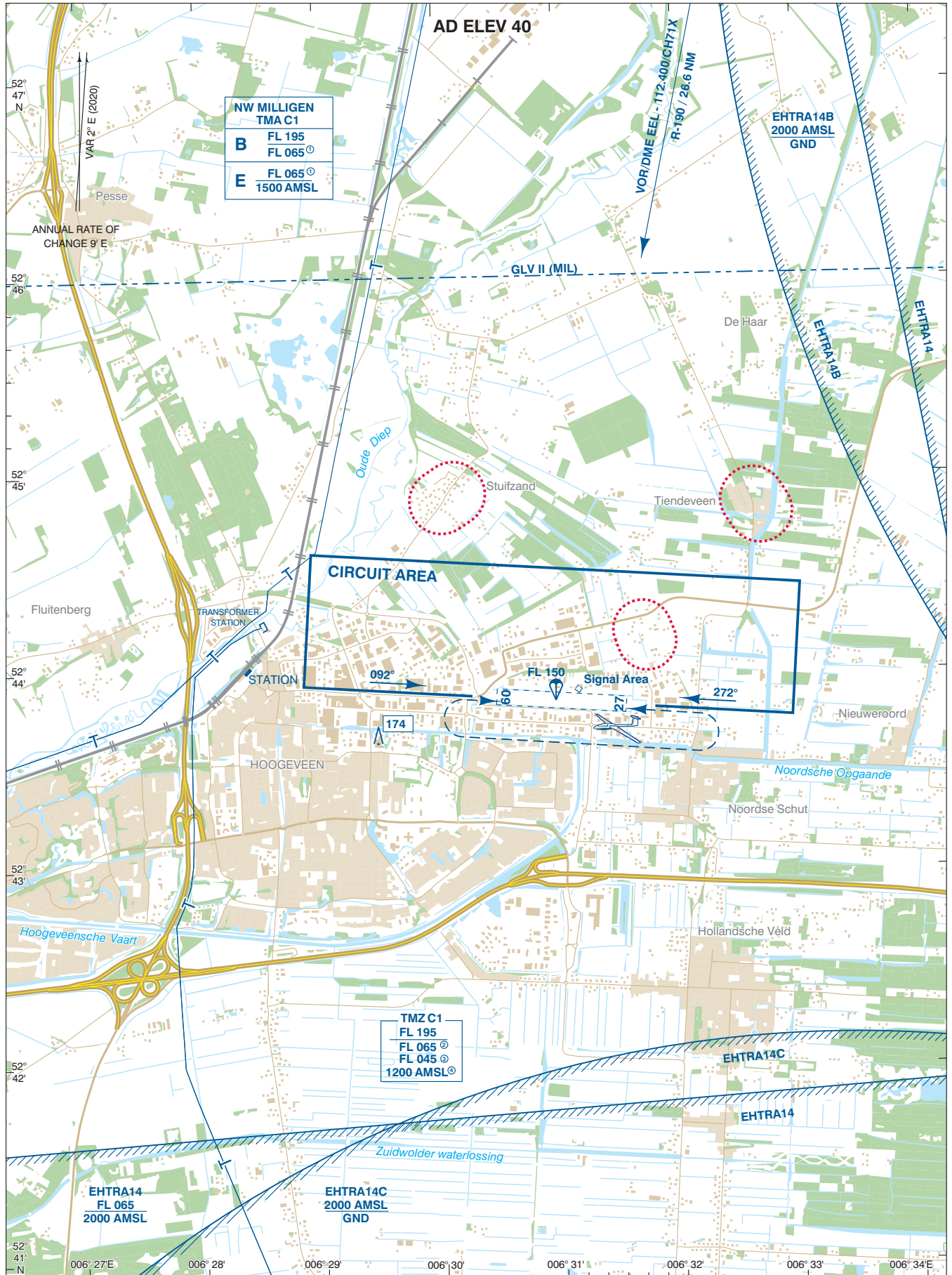
MARKING AIDS : RWY THR : by white markers.
White markers separate the aeroplane and glider landing areas.

CAUTION :

1. Glider flying may take place daily (only on S part of AD).
2. Parachute jumping may take place as stated in ENR 5.5 and/or as promulgated by NOTAM.
3. Grass cutting may take place at irregular times.

DIRECTIONS ARE MAGNETIC
ELEVATIONS IN FEET AMSL
DIMENSIONS IN METRES



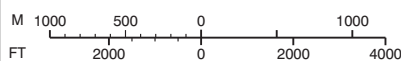


For description VFR - procedures see EHHO AD 2.22.

NOTE:

- ① During weekends FRI 1600 - SUN 2300 (FRI 1500 - SUN 2200) and HOL classified E up to and including FL 095.
- ② MON-FRI before 0800 (0700) and after 1600 (1500), SAT, SUN and HOL.
- ③ MON-FRI 0800-1600 (0700-1500), EXC HOL: lower limit for non-motorised hanggliders and paragliders.
- ④ MON-FRI 0800-1600 (0700-1500), EXC HOL: lower limit 1200 FT AMSL.

SCALE 1 : 50 000



AD Info 127.355 Hoogeveen Radio
 FIC (MIL) 132.350 Dutch MIL Info

DIRECTIONS ARE MAGNETIC
 DISTANCES IN NM
 ALTITUDES AND ELEVATIONS
 IN FEET AMSL
 HIGHEST KNOWN ELEVATION
 ON THIS CHART: **174**

Area to be avoided

