

## AD 2 AERODROMES

## EHAL — AMELAND/Ameland

Note: the following sections in this chapter are intentionally left blank:  
AD 2.7, AD 2.8, AD 2.11, AD 2.14, AD 2.19, AD 2.21.

## EHAL AD 2.1 AERODROME LOCATION INDICATOR AND NAME

EHAL — AMELAND/Ameland

## EHAL AD 2.2 AERODROME GEOGRAPHICAL AND ADMINISTRATIVE DATA

|   |  |   |
|---|--|---|
| 1 | ARP co-ordinates and site at AD                                      | 532706N 0054038E  |
| 2 | Direction and distance from (city)                                   | Western part of the island Ameland.   |
| 3 | Elevation/reference temperature                                      | 11 FT AMSL/19.4°C.  |
| 4 | Geoid undulation at AD ELEV PSN                                      | Not AVBL.   |
| 5 | MAG VAR/annual change  | 2°E (2020)/10'E.  |
| 6 | AD operator, postal address, telephone, telefax, email, AFS, website | Post: Municipality of Ameland<br>P.O. Box 22<br>9160 AA Hollum, Ameland<br>The Netherlands<br>Tel: +31 (0)519 554 030<br>Email: info@ehal.nl<br>URL: <a href="https://www.ameland.nl/vliegveld">https://www.ameland.nl/vliegveld</a>                  |
| 7 | Types of traffic permitted (IFR/VFR)                                 | VFR   |
| 8 | Remarks  | 1. Aerodrome available for use by national civil air traffic with all types of aircraft up to MAX 6000 KG and gliders.<br>2. Flights between EHAL and Schengen Treaty countries permitted.<br>The import, export and transit of cargo is not allowed. |

## EHAL AD 2.3 OPERATIONAL HOURS

|    |                            |   |
|----|----------------------------|---|
| 1  | AD operator                | MON-SUN: - (0730-1700) but within UDP.<br><b>Note:</b> PN required;<br>PPR between - (1600-1700).<br><b>Note:</b> During winter period: limited AVBL, 1 hour PPR. |
| 2  | Customs and immigration    | NA  |
| 3  | Health and sanitation      | NA  |
| 4  | AIS briefing office        | H24<br>Tel: +31 (0)20 406 2315<br>URL: <a href="https://www.homebriefing.nl">https://www.homebriefing.nl</a>  |
| 5  | ATS reporting office (ARO) | Competent ATS unit: ARO Schiphol, see EHAM AD 2.3.  |
| 6  | MET briefing office        | NA  |
| 7  | ATS                        | NA  |
| 8  | Fuelling                   | AD OPR HR.  |
| 9  | Handling                   | NA  |
| 10 | Security                   | NA  |
| 11 | De-icing                   | NA  |
| 12 | Remarks                    | NIL   |

## EHAL AD 2.4 HANDLING SERVICES AND FACILITIES

|   |                           |   |
|---|---------------------------|---|
| 1 | Cargo-handling facilities | NIL   |
| 2 | Fuel/oil types            | AVGAS 100LL, MOGAS Euro 98, (Jet A-1 O/R) /-. |

|   |  |  |
|---|--|--|
| 3 | <b>Fuelling facilities/capacity</b>            | AVGAS 100LL: 12 000 litres, 80 litres/MIN;<br>MOGAS Euro 98: 10 000 litres, 80 litres/MIN;<br>Jet A-1: 8000 litres, 80 litres/MIN. |
| 4 | <b>De-icing facilities</b>                     | NIL  |
| 5 | <b>Hangar space for visiting aircraft</b>      | Limited AVBL.  |
| 6 | <b>Repair facilities for visiting aircraft</b> | NIL  |
| 7 | <b>Remarks</b>                                 | NIL  |

### EHAL AD 2.5 PASSENGER FACILITIES

|   |                             |   |
|---|-----------------------------|---|
| 1 | <b>Hotels</b>               | On the island.  |
| 2 | <b>Restaurants</b>          | In Ballum.  |
| 3 | <b>Transportation</b>       | Bus and taxi.   |
| 4 | <b>Medical facilities</b>   | First aid AVBL.   |
| 5 | <b>Bank and post office</b> | In Nes.   |
| 6 | <b>Tourist office</b>       | Post: VVV Ameland<br>Bureweg 2<br>9163 KE Nes, Ameland<br>Tel: +31 (0)519 546 546<br>URL: www.vvvameland.nl |
| 7 | <b>Remarks</b>              | NIL   |

### EHAL AD 2.6 RESCUE AND FIRE FIGHTING SERVICES

|   |  |               |
|---|--|---------------|
| 1 | <b>AD category for fire fighting</b>               | CAT 2.        |
| 2 | <b>Rescue equipment</b>                            | 1 fire truck. |
| 3 | <b>Capability for removal of disabled aircraft</b> | NIL           |
| 4 | <b>Remarks</b>                                     | NIL           |

### EHAL AD 2.9 SURFACE MOVEMENT GUIDANCE AND CONTROL SYSTEM AND MARKINGS

|   |  |  |
|---|--|--|
| 1 | <b>Use of aircraft stand ID signs, TWY guide lines and visual docking/parking guidance system at aircraft stands</b> | NIL  |
| 2 | <b>RWY and TWY markings and LGT</b>  | THR: white markers.<br>RWY: white cones.<br>TWY: blue cones. |
| 3 | <b>Stop bars</b>   | NIL  |
| 4 | <b>Remarks</b>   | NIL  |

### EHAL AD 2.10 AERODROME OBSTACLES

For obstacles at and in the vicinity of the aerodrome see AD 2.EHAL-ADC.

### EHAL AD 2.12 RUNWAY PHYSICAL CHARACTERISTICS

| Designations<br>RWY NR | True BRG | Dimensions of<br>RWY (M) | Strength (PCN) and sur-<br>face of RWY and SWY | THR co-ordinates<br>RWY end co-ordinates<br>THR GUND | THR elevation and<br>highest elevation of TDZ<br>of precision APCH RWY |
|------------------------|----------|--------------------------|--|--|--|
| 1                      | 2        | 3                        | 4  | 5  | 6  |
| 08                     | 087°     | 860 x 30                 | 6000 KG <sup>(1) 2) 3)</sup> ; grass           | Not AVBL   | NA   |
| 26                     | 267°     | 860 x 30                 | 6000 KG <sup>(1) 2) 3)</sup> ; grass           | Not AVBL   | NA   |

| Designations<br>RWY NR | Slope of RWY-<br>SWY | SWY dimensions<br>(M) | CWY dimensions (M) | Strip dimensions (M) | OFZ |
|------------------------|----------------------|-----------------------|--------------------|----------------------|-----|
| 1                      | 7                    | 8                     | 9                  | 10                   | 11  |
| 08                     | NA                   | NA                    | NA                 | NA                   | NA  |
| 26                     | NA                   | NA                    | NA                 | NA                   | NA  |

| Remarks  |
|--|
| 12   |
| <sup>1)</sup> Bearing strength.<br><sup>2)</sup> MAX tyre pressure 0.35 MPa.<br><sup>3)</sup> ICAO RWY classification: 2b. |

### EHAL AD 2.13 DECLARED DISTANCES

| RWY Designator | TORA (M) | TODA (M) | ASDA (M) | LDA (M) | Remarks |
|----------------|----------|----------|----------|---------|---------|
| 1              | 2        | 3        | 4        | 5       | 6       |
| 08             | 860      | 860      | 860      | 860     | NIL     |
| 26             | 860      | 860      | 860      | 860     | NIL     |

### EHAL AD 2.15 OTHER LIGHTING, SECONDARY POWER SUPPLY

|   |  |   |
|---|--|---|
| 1 | ABN/IBN location, characteristics and hours of operation | NIL   |
| 2 | LDI location and LGT<br>Anemometer location and LGT      | LDI and anemometer: 500 M S from THR RWY 26, unlighted. |
| 3 | TWY edge and centre line lighting                        | NIL   |
| 4 | Secondary power supply<br>Switch-over time               | NIL   |
| 5 | Remarks  | NIL   |

### EHAL AD 2.16 HELICOPTER LANDING AREA

|   |   |   |
|---|---|---|
| 1 | Co-ordinates TLOF or THR of FATO<br>Geoid undulation      | NIL<br>Information not AVBL.  |
| 2 | TLOF and/or FATO elevation M/FT                           | NIL   |
| 3 | TLOF and FATO area dimensions, surface, strength, marking | NIL   |
| 4 | True BRG of FATO  | NIL   |
| 5 | Declared distance available                               | NIL   |
| 6 | APCH and FATO lighting                                    | Pilot controlled lighting (see EHAL AD 2.23).   |
| 7 | Remarks   | Helicopter landing area 400 M SSW from THR RWY 26.<br>Heliport available for HEMS flights only. |

### EHAL AD 2.17 ATS AIRSPACE

|   |                                   |                                       |
|---|-----------------------------------|---------------------------------------|
| 1 | Designation and lateral limits    | NA                                    |
| 2 | Vertical limits                   | NA                                    |
| 3 | Airspace classification           | G                                     |
| 4 | ATS unit call sign<br>Language(s) | NA                                    |
| 5 | Transition altitude               | IFR: 3000 FT AMSL; VFR: 3500 FT AMSL. |
| 6 | Hours of applicability            | NA                                    |
| 7 | Remarks                           | NIL                                   |

### EHAL AD 2.18 ATS COMMUNICATION FACILITIES

| Service designation   | Call sign     | Channel/<br>Frequency (MHz) | Hours of operation | Remarks |
|-----------------------|---------------|-----------------------------|--------------------|---------|
| 1                     | 2             | 3                           | 4                  | 5       |
| Aerodrome Information | Ameland Radio | 118.355                     | See EHAL AD 2.3.   | NIL     |

## EHAL AD 2.20 LOCAL AERODROME REGULATIONS

### 1 TAXI PROCEDURES

Taxiing outside the marked ways is not allowed.

## EHAL AD 2.22 FLIGHT PROCEDURES

### 1 VFR FLIGHT PROCEDURES AND REGULATIONS

1. The minimum approach altitude for the aerodrome is 1011 FT AMSL (1000 FT AAL).
2. The circuit altitude is 711 FT AMSL (700 FT AAL).
3. Helicopters shall avoid low flying above the solar farm:
  - civil helicopters join and leave via the circuit;
  - rescue helicopters allowed for direct approach to the helispot, with sufficient altitude.
4. Departing aircraft are requested to turn as soon (and safe) as possible towards the North Sea and continue to climb along the coastline.
5. For motorised civil air traffic above the natural area Waddenzee the following applies:
  - flights below 1500 FT AGL are not allowed;
  - when ceiling < 1500 FT AGL or flight visibility < 8 KM, flights between 1000 FT AGL and 1500 FT AGL are allowed within the corridors depicted on chart ENR 6-5.3 (see ENR 5.6 paragraph 2).
6. Two-way radio communication with Ameland Radio is strongly recommended due to combined operations of motorised traffic and gliders.

## EHAL AD 2.23 ADDITIONAL INFORMATION

### 1 CAUTION AND ADDITIONAL INFORMATION

1. Intensive flights may take place by military aircraft or offshore helicopters in the area covered by the chart AD 2.EHAL-VAC.
2. Intensive parachute jumping may take place, this will be promulgated by NOTAM or supplement.
3. In the period JUN-AUG intensive glider activities with winch and tow starts.
4. Use caution while taxiing on TWY A: landing gliders might cross TWY A at low altitude.
5. TWY D closed during glider activities.
6. Possible sun reflection and glare caused by solar panels in southwest corner of the aerodrome.
7. Grass cutting may take place at irregular times.

### 2 PILOT CONTROLLED LIGHTING

To operate the pilot controlled heliport lighting select 118.355 and click the (push-to-talk) microphone switch repeatedly.

- Switch on heliport lighting: 5 clicks within 5 SEC. The lights remain on for 15 MIN.
- Switch off heliport lighting: 3 clicks within 5 SEC.

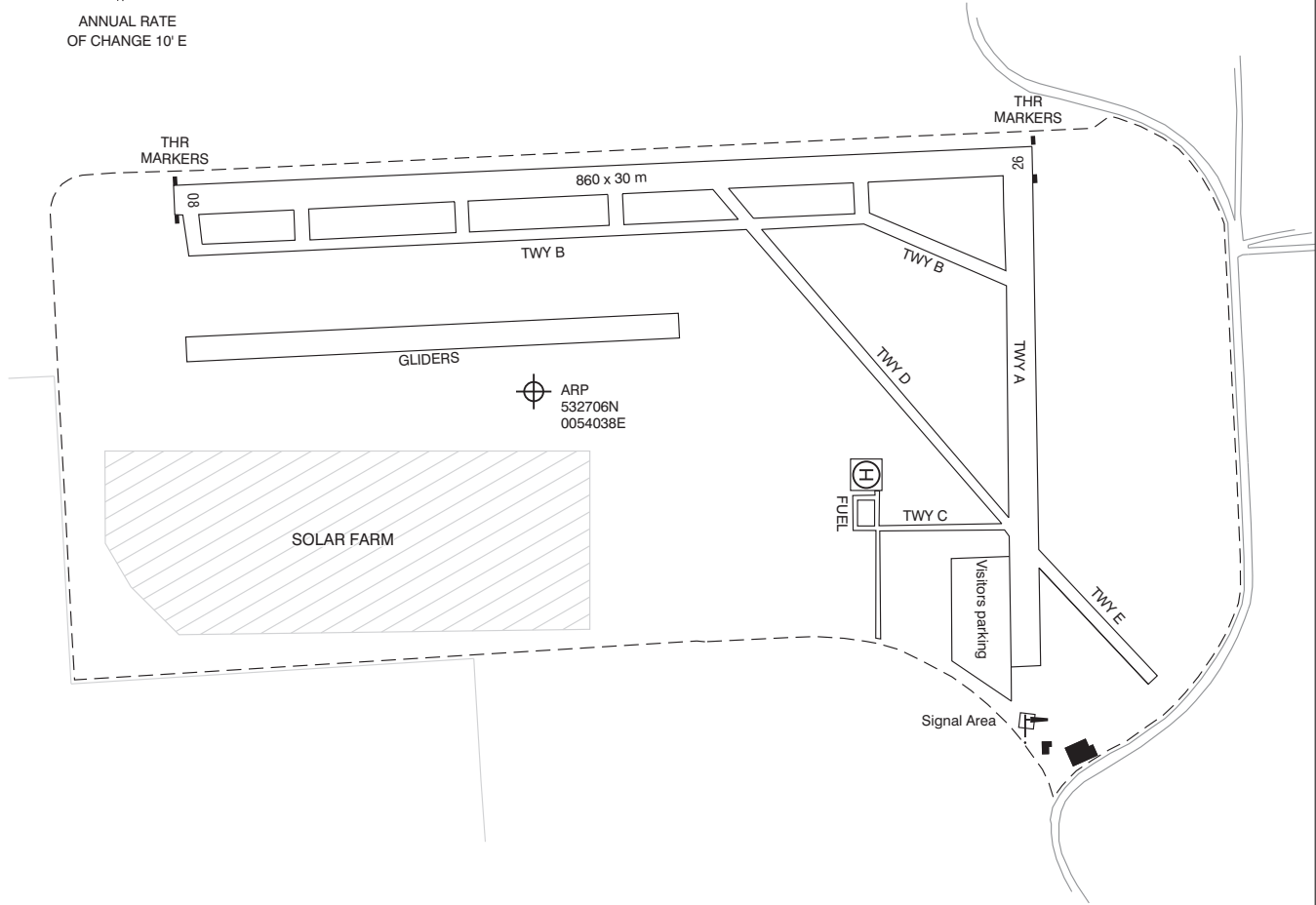
## EHAL AD 2.24 CHARTS RELATED TO AN AERODROME

| Type of chart         | Page          |
|-----------------------|---------------|
| Aerodrome chart       | AD 2.EHAL-ADC |
| Visual approach chart | AD 2.EHAL-VAC |

AD ELEV 11

AD info 118.355 Ameland Radio

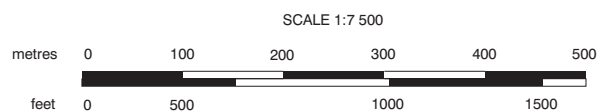
VAR 2° E (2020)  
ANNUAL RATE  
OF CHANGE 10' E



ARP  
532706N  
0054038E

| PHYSICAL CHARACTERISTICS |           |         |                |         |
|--------------------------|-----------|---------|----------------|---------|
| RWY                      | DIRECTION | MAX AUV | MAX TYRE PRESS | SURFACE |
| 08                       | 085°      | 6000 kg | 0.35 MPa       | GRASS   |
| 26                       | 265°      | 6000 kg | 0.35 MPa       | GRASS   |

DIRECTIONS ARE MAGNETIC  
ELEVATIONS IN FEET AMSL  
DIMENSIONS IN METRES

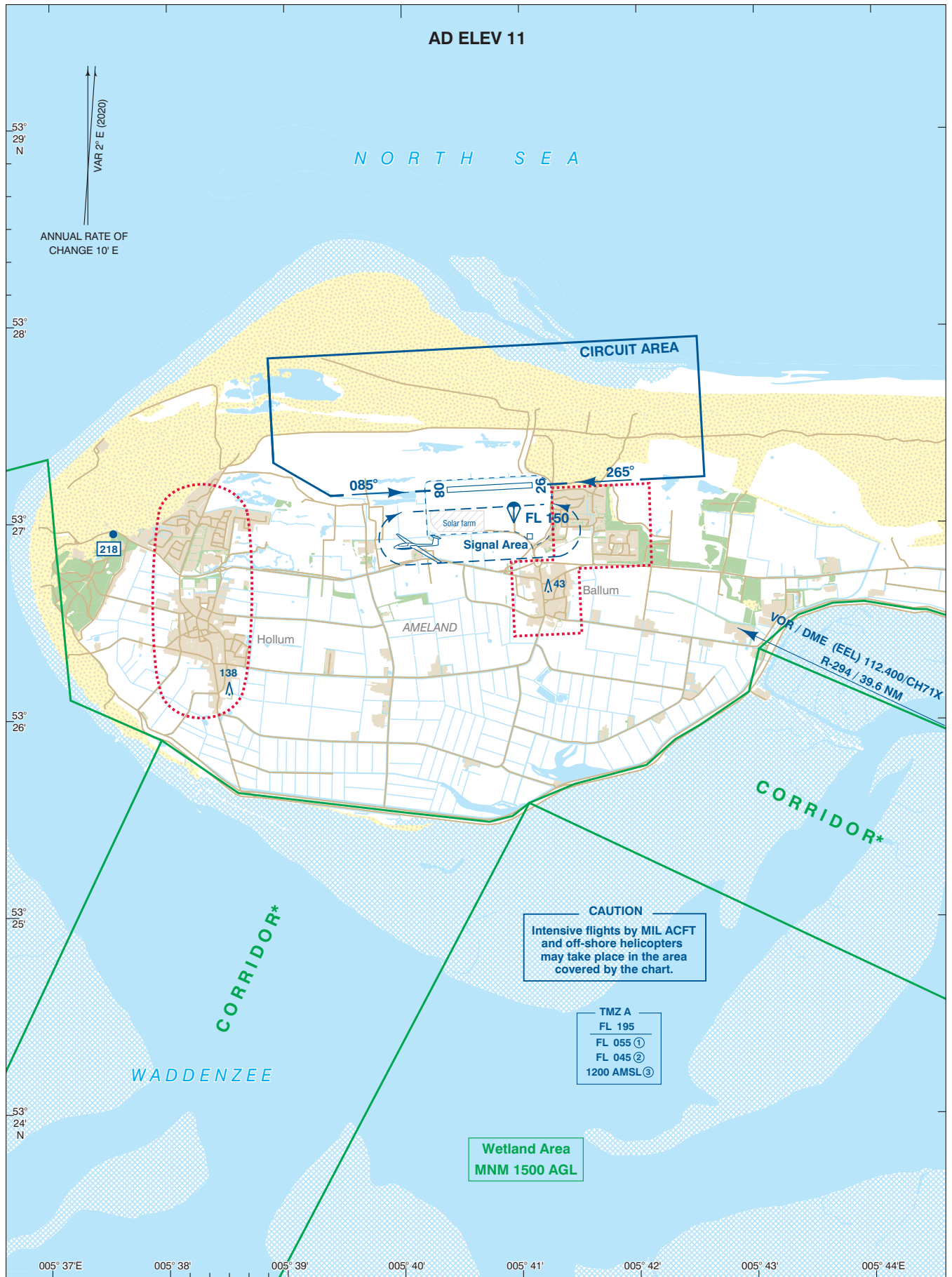


LIGHTING AIDS  
RWY: None.  
Heliport: Green perimeter lights.  
PCL; see EHAL AD 2.23.

MARKING AIDS  
THR: White markers.  
RWY: White cones.  
TWY: Blue cones.

- CAUTION:
1. Use caution while taxiing on TWY A: landing gliders might cross TWY A at low altitude.
  2. TWY D closed during glider activities.
  3. Grass cutting may take place at irregular times.





For description VFR - procedures see EHAL AD 2.22.

**NOTE:**

- \* For motorised civil air traffic above the natural area Waddenzee the following applies:
  - flights below 1500 FT AGL are not allowed.
  - when ceiling < 1500 FT AGL or flight visibility < 8 KM, flights between 1000 FT AGL and 1500 FT AGL are allowed within the corridors.

**TMZ A:**

- ① MON-FRI before 0800 (0700) and after 1600 (1500), SAT, SUN and HOL.
- ② MON-FRI 0800-1600 (0700-1500), EXCL HOL: lower limit for non-motorised hanggliders and paragliders.
- ③ MON-FRI 0800-1600 (0700-1500), EXCL HOL: lower limit 1200 AMSL.

- Area to be avoided
- Wetland Area

AD Info 118.355 Ameland Radio  
FIC (MIL) 132.350 Dutch MIL Info

DIRECTIONS ARE MAGNETIC  
DISTANCES IN NM  
ALTITUDES AND ELEVATIONS  
IN FEET AMSL  
HIGHEST KNOWN ELEVATION  
ON THIS CHART: [218]

