

EHMZ — MIDDELBURG/Midden-Zeeland

Note: the following sections in this chapter are intentionally left blank:
AD 2.7, AD 2.8, AD 2.11, AD 2.14, AD 2.16, AD 2.19, AD 2.20.

EHMZ AD 2.1 AERODROME LOCATION INDICATOR AND NAME

EHMZ — MIDDELBURG/Midden-Zeeland

EHMZ AD 2.2 AERODROME GEOGRAPHICAL AND ADMINISTRATIVE DATA

1	ARP co-ordinates and site at AD	513044N 0034352E 136 DEG GEO 174 M from TWR.
2	Direction and distance from (city)	5 NM ENE from Middelburg.
3	Elevation/reference temperature	6 FT AMSL/20.3°C.
4	Geoid undulation at AD ELEV PSN	Not AVBL.
5	MAG VAR/annual change	1°E (2020)/9°E.
6	AD operator, postal address, telephone, telefax, email, AFS, website	Post: Zeeland Airport B.V. Calandweg 36 4341 RA Arnemuiden The Netherlands Tel: +31 (0)113 612 528 Email: info@vliegveldzeeland.nl URL: https://www.vliegveldzeeland.nl
7	Types of traffic permitted (IFR/VFR)	VFR
8	Remarks	1. Aerodrome available for national and international civil air traffic with all types of aircraft, with wingspan up to but not including 24 M and/or outer main gear wheel span up to but not including 6 M, and gliders. 2. The importation, exportation and transit of cargo is not allowed. 3. International civil air traffic coming from non-Schengen countries has to be reported to customs 2 hours before arrival.

EHMZ AD 2.3 OPERATIONAL HOURS

1	AD operator	Daily: 0800-1900 (0700-1800). Outside OPR HR BTN SR-SS, O/R 24 HR PN.
2	Customs and immigration	Customs: SR-SS 2 HR PN ¹⁾ . Immigration: SR-SS 2 HR PN ¹⁾ .
3	Health and sanitation	NA
4	AIS briefing office	H24 Tel: +31 (0)20 406 2315 URL: https://www.homebriefing.nl
5	ATS reporting office (ARO)	Competent ATS unit: ARO Schiphol, see EHAM AD 2.3.
6	MET briefing office	NA
7	ATS	NA
8	Fuelling	OPR HR
9	Handling	NA
10	Security	NA
11	De-icing	NA
12	Remarks	¹⁾ PN means permission from and/or in case of customs etc. notification other than by (VFR) flight plans to aerodrome authority as appropriate.

EHMZ AD 2.4 HANDLING SERVICES AND FACILITIES

1	Cargo-handling facilities	NIL
2	Fuel/oil types	AVGAS 100LL, Jet A-1, Mogas Euro 98 unleaded/W100 Plus, 15W50.

3	Fuelling facilities/capacity	AVGAS 100LL: 24 000 litres; Jet A-1: 20 000 litres; Mogas Euro 98 unleaded: 6000 litres.
4	De-icing facilities	NIL
5	Hangar space for visiting aircraft	Limited AVBL.
6	Repair facilities for visiting aircraft	Repairs to light aircraft.
7	Remarks	NIL

EHMZ AD 2.5 PASSENGER FACILITIES

1	Hotels	Unlimited accommodation in Goes, Middelburg and Vlissingen.
2	Restaurants	At the aerodrome.
3	Transportation	Rental cars and (electric) bicycles.
4	Medical facilities	First aid AVBL.
5	Bank and post office	Arnemuiden
6	Tourist office	Middelburg and Goes.
7	Remarks	NIL

EHMZ AD 2.6 RESCUE AND FIRE FIGHTING SERVICES

1	AD category for fire fighting	Prescribed amount of water and foam production and complementary extinguishing agents AVBL during OPR HR in accordance with airport CAT 3, and CAT 4 O/R.
2	Rescue equipment	1 fire tender, 1 intervention vehicle.
3	Capability for removal of disabled aircraft	AVBL via Transal Aero Services and/or Vliegwerk Holland.
4	Remarks	NIL

EHMZ AD 2.9 SURFACE MOVEMENT GUIDANCE AND CONTROL SYSTEM AND MARKINGS

1	Use of aircraft stand ID signs, TWY guide lines and visual docking/parking guidance system at aircraft stands	NIL
2	RWY and TWY markings and LGT	RWY: THR by black-and-white marking; edge by white conical markers.
3	Stop bars	NIL
4	Remarks	NIL

EHMZ AD 2.10 AERODROME OBSTACLES

For obstacles at and in the vicinity of the aerodrome see AD 2.EHMZ-ADC.

EHMZ AD 2.12 RUNWAY PHYSICAL CHARACTERISTICS

Designations RWY NR	True BRG	Dimensions of RWY (M)	Strength (PCN) and sur- face of RWY and SWY	THR co-ordinates RWY end co-ordinates THR GUND	THR elevation and highest elevation of TDZ of precision APCH RWY
1	2	3	4	5	6
09	088°	1000 x 30	6000 KG ¹⁾²⁾³⁾ grass	Not AVBL	NA
27	268°	1000 x 30	6000 KG ¹⁾²⁾³⁾ grass	Not AVBL	NA

Designations RWY NR	Slope of RWY-SWY	SWY dimensions (M)	CWY dimen- sions (M)	Strip dimen- sions (M)	RESA dimen- sions (M)	Location and type of arresting system	OFZ
1	7	8	9	10	11	12	13
09	NA	60 x 30	60 x 150	1150 x 150	INFO not AVBL	INFO not AVBL	NA
27	NA	60 x 30	120 x 150	1150 x 150	INFO not AVBL	INFO not AVBL	NA

Remarks
14
¹⁾ Bearing strength. ²⁾ MAX tyre pressure 0.52 MPa. ³⁾ When surface conditions so permit, the aerodrome manager can admit aircraft with a higher MAUW and a higher tyre pressure.

EHMZ AD 2.13 DECLARED DISTANCES

RWY Designator	TORA (M)	TODA (M)	ASDA (M)	LDA (M)	Remarks
1	2	3	4	5	6
09	1000	1060	1060	810	DTHR 190 M.
27	1000	1120	1060	885	DTHR 115 M.

EHMZ AD 2.15 OTHER LIGHTING, SECONDARY POWER SUPPLY

1	ABN/IBN location, characteristics and hours of operation	NIL
2	LDI location and LGT Anemometer location and LGT	LDI: 90 M N from THR RWY 09, unlighted. Wind direction indicator (wind sleeve): 90 M N from THR RWY 09 and 120 M WNW from THR RWY 27, unlighted.
3	TWY edge and centre line lighting	NIL
4	Secondary power supply Switch-over time	NIL
5	Remarks	NIL

EHMZ AD 2.17 ATS AIRSPACE

1	Designation and lateral limits	NA
2	Vertical limits	NA
3	Airspace classification	G
4	ATS unit call sign Language(s)	NA
5	Transition altitude	IFR; 3000 FT AMSL; VFR: 3500 FT AMSL.
6	Hours of applicability	NA
7	Remarks	NIL

EHMZ AD 2.18 ATS COMMUNICATION FACILITIES

Service designation	Call sign	Channel(s)	SATVOICE NR	Logon address	Hours of operation	Remarks
1	2	3	4	5	6	7
Aerodrome information	Midden-Zeeland Radio	119.255	INFO not AVBL	INFO not AVBL	See EHMZ AD 2.3	NIL

EHMZ AD 2.21 NOISE ABATEMENT PROCEDURES

West of the aerodrome at APRX 0.5 NM a large multi functional recreational area (a.o. campsite) is located.

To avoid this area, noise abatement procedures have been introduced for:

- departures/circuits from grass RWY 27 and
- approaches/circuits to grass RWY 09.

If for safety reasons the preferred procedures (noise abatement) cannot be executed, the alternate procedures shall be used.

For details see EHMZ AD 2.22 Flight Procedures.

EHMZ AD 2.22 FLIGHT PROCEDURES

1 VFR FLIGHT PROCEDURES AND REGULATIONS

Note: joining and leaving the circuit shall take place as depicted on the visual approach chart AD 2.EHMZ-VAC.1.

1.1 General

1. The circuit area may not be overflown below an altitude of 1006 FT AMSL (1000 FT AAL).
2. The circuit altitude is 706 FT AMSL (700 FT AAL).
3. The visual traffic circuit must be carried out within the lateral limits of the circuit area appropriate to the runway in use.
4. Caution: on final motorised aircraft shall give way to gliders in the glider circuit south of the aerodrome.
5. Marked areas shall be avoided, if safety permits.
6. Built-up areas shall be avoided as much as possible.
7. PPR for aircraft not equipped with radio.

1.2 Visual departure procedures

1.2.1 RWY 09

Leave the circuit in accordance with the rules of the standard circuit (see ENR 1.2 paragraph 8).

1.2.2 RWY 27

1. On upwind, approximately 800 M after passing the end of the runway, turn right to track 297° MAG to avoid the campsite.
2. Do not turn below 206 FT AMSL (200 FT AAL).
3. Leave the circuit area on track 297° MAG while climbing out to 1006 FT AMSL (1000 FT AAL).

Note: If for safety reasons the preferred (noise abatement) departure procedure cannot be executed, climb out straight ahead.

1.3 Visual approach procedures

1.3.1 RWY 09

1. Join the circuit in accordance with the rules of the standard circuit.
2. The final leg shall be carried out under avoidance of the campsite west of the aerodrome, if safety permits.
3. The final leg may be offset by 30° (track 117° MAG).
4. Establish final track 087° MAG at 306 FT AMSL (300 FT AAL).
5. Overtaking (cutting off) of traffic using the alternate procedure is prohibited.

Note: If for safety reasons the preferred (noise abatement) approach procedure cannot be executed, follow the standard circuit.

1.3.2 RWY 27

The standard circuit is applicable (see ENR 1.2 paragraph 8).

1.4 Helicopter procedures

Note: joining and leaving the circuit shall take place as depicted on the visual approach chart AD 2.EHMZ-VAC.2.

1.4.1 General

In addition to paragraph 1.1 General the following applies:

1. This helicopter procedure is only allowed for SAR, coastguard, police, military, offshore and HEMS flights.
2. Only allowed MON-FRI and when there is no glider activity.
3. Radio contact is mandatory.
4. Contact Midden-Zeeland Radio 5 minutes before arriving in the South sector.
5. Only 1 helicopter in the route is allowed.

1.4.2 Visual departure procedures

- RWY09: leave the glider circuit at the end of downwind via the south.
- RWY 27: leave the glider circuit at the end of crosswind via the south.

1.4.3 Visual approach procedures

- RWY 09: join the glider circuit via the south at the beginning of base leg.
- RWY 27: join the glider circuit via the south at the beginning of downwind leg.

EHMZ AD 2.23 ADDITIONAL INFORMATION**1 CAUTIONS AND ADDITIONAL INFORMATION**

1. Glider flying may take place daily on the indicated glider strip; in weekends increased glider activities occur.
2. The glider launching and circuit areas shall be avoided by other aircraft.
3. During the summer months outside AD OPR HR gliders will be launched by winch. Do not overfly the aerodrome below 2006 FT AMSL (2000 FT AAL).
4. Pilots who turn to an offset final leg to grass RWY 09 shall keep a sharp look-out for traffic from the west on either the offset approach or the standard approach.
5. Grass cutting may take place daily.
6. Parachute jumping may take place as stated in ENR 5.5 and/or as promulgated by NOTAM.
7. Helicopters shall park at south side of the fuel station for refuelling.
8. During the summer months outside AD OPR HR possible RPAS operations at the aerodrome. Do not overfly the aerodrome below 2006 FT AMSL (2000 FT AAL).
9. Coastguard flights may take place daily. Be aware of medium wake turbulence.

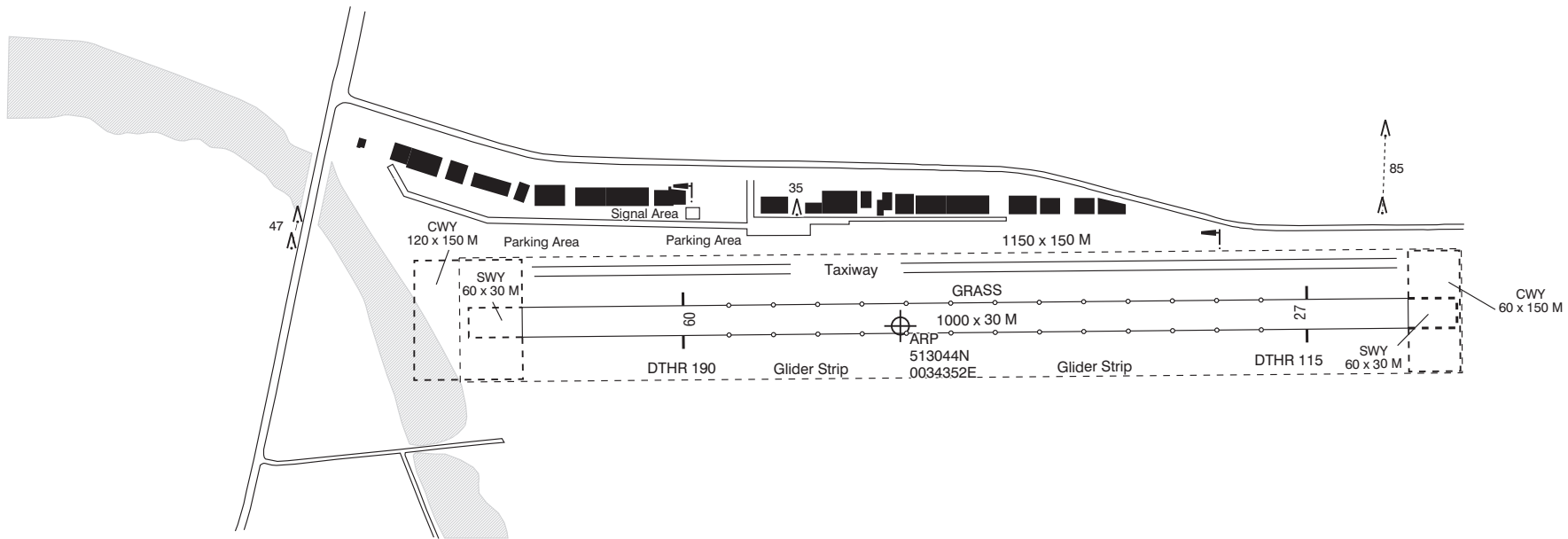
EHMZ AD 2.24 CHARTS RELATED TO AN AERODROME

Type of chart	Page
Aerodrome chart	AD 2.EHMZ-ADC
Visual approach chart/VFR procedures	AD 2.EHMZ-VAC.1
Visual approach chart/VFR helicopter procedures	AD 2.EHMZ-VAC.2

AD Info 119.255 Midden Zeeland Radio

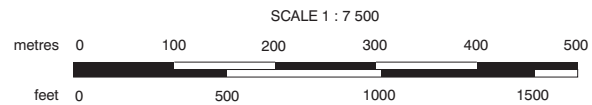
AD ELEV 6

VAR 1° E (2020)
ANNUAL RATE OF CHANGE 9' E



PHYSICAL CHARACTERISTICS				
RWY	DIRECTION	MAX AUW	MAX TYRE PRESS	SURFACE
09	087°	6000 KG	0.52 MPa	GRASS
27	267°	6000 KG	0.52 MPa	GRASS

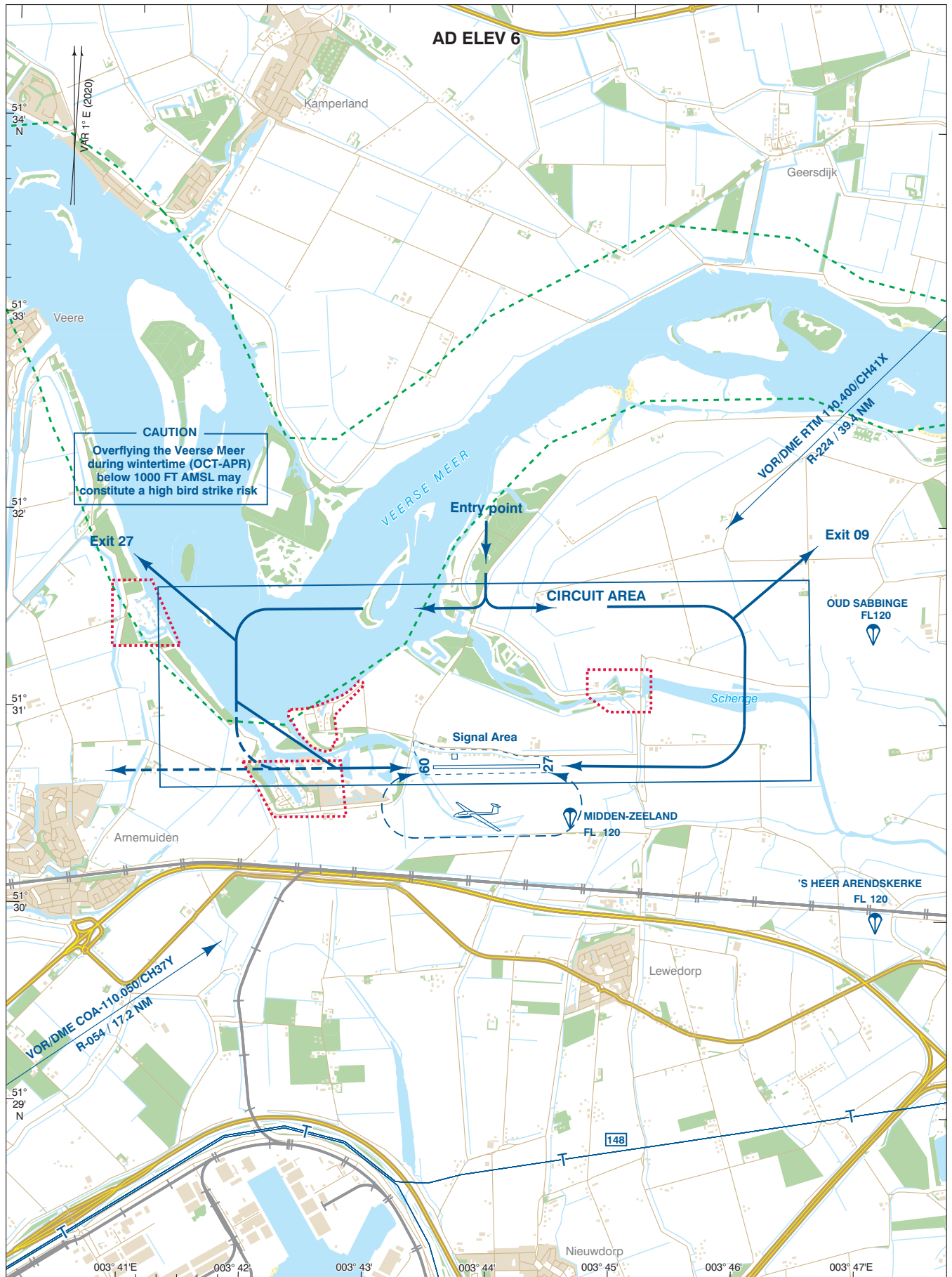
DIRECTIONS ARE MAGNETIC
ELEVATIONS IN FEET AMSL
DIMENSIONS IN METRES



LIGHTING AIDS: None

MARKING AIDS: RWY: THR by black and white marking; edge by white conical markers.

----- MANOEUVRING AREA



<p>For description VFR - procedures see EHMZ AD 2.22.</p> <p>Circuit altitude 706 FT AMSL</p> <ul style="list-style-type: none"> ⋯ Area to be avoided ⋯ Bird sanctuary (GND/MSL - 1000 FT AMSL) — Preferred (noise abatement) approach-/circuit procedure - - - Alternate approach-/circuit procedure only for safety reasons 		<p>SCALE 1:50,000</p> <p>M 1000 500 0 1000</p> <p>FT 2000 0 2000 4000</p> <p>DIRECTIONS ARE MAGNETIC DISTANCES IN NM ALTITUDES AND ELEVATIONS IN FEET AMSL HIGHEST KNOWN ELEVATION ON THIS CHART: [148]</p>	<p>AD Info 119.255 Midden-Zeeland Radio</p> <p>FIC (MIL) 132.350 Dutch MIL Info</p> <p>FIC 124.300 Amsterdam Information</p>
--	--	--	--

