

**EHDR — DRACHTEN/Drachten**

Note: the following sections in this chapter are intentionally left blank:  
AD 2.4, AD 2.7, AD 2.11, AD 2.14, AD 2.16, AD 2.19, AD 2.20, AD 2.21.

**EHDR AD 2.1 AERODROME LOCATION INDICATOR AND NAME**

EHDR — DRACHTEN/Drachten

**EHDR AD 2.2 AERODROME GEOGRAPHICAL AND ADMINISTRATIVE DATA**

1	ARP co-ordinates and site at AD	530705N 0060745E Middle of runway.
2	Direction and distance from (city)	1 NM NE from Drachten.
3	Elevation/reference temperature	14 FT AMSL/20.5°C.
4	Geoid undulation at AD ELEV PSN	Information not AVBL.
5	MAG VAR/annual change	2°E (2020)/10'E.
6	AD operator, postal address, telephone, telefax, email, AFS, website	Post: Municipality of Smallerland Gauke Boelensstraat 2 9203 RM Drachten The Netherlands Tel: +31 (0)512 581 234 (flight notification, information and administration) +31 (0)512 513 245 (airport authority) during OPR HR. URL: <a href="https://www.ehdr.aero">https://www.ehdr.aero</a>
7	Types of traffic permitted (IFR/VFR)	VFR
8	Remarks	1. Aerodrome available for national and international civil air traffic with business-like purposes with all types of aircraft up to 6000 KG AUW, including a limited use by MLA. 2. Importation and exportation of merchandise, except travellers luggage, not allowed.

**EHDR AD 2.3 OPERATIONAL HOURS**

1	AD operator	AD PPR. • MON, WED, FRI, SUN: 1100-1800 (1000-1700) but within UDP; • SAT: 0800-1800 (0700-1700) but within UDP; • Other days and times O/R.
2	Customs and immigration	NIL
3	Health and sanitation	NA
4	AIS briefing office	H24 Tel: +31 (0)20 406 2315 URL: <a href="https://www.homebriefing.nl">https://www.homebriefing.nl</a>
5	ATS reporting office (ARO)	Competent ATS unit: ARO Schiphol, see EHAM AD 2.3.
6	MET briefing office	NA
7	ATS	NA
8	Fuelling	NA
9	Handling	NA
10	Security	NA
11	De-icing	NA
12	Remarks	<sup>1)</sup> PN means permission from and/or in case of customs etc. notification other than by (VFR) flight plans to aerodrome authority as appropriate.

**EHDR AD 2.5 PASSENGER FACILITIES**

1	Hotels	Accommodation in Drachten.
2	Restaurants	In Drachten.

3	Transportation	Taxi (on request).
4	Medical facilities	First aid treatment; hospital in Drachten.
5	Bank and post office	In Drachten.
6	Tourist office	In Drachten.
7	Remarks	NIL

### EHDR AD 2.6 RESCUE AND FIRE FIGHTING SERVICES

1	AD category for fire fighting	CAT 1. Arrangements have been made with the local fire brigade.
2	Rescue equipment	Information not AVBL.
3	Capability for removal of disabled aircraft	Information not AVBL.
4	Remarks	NIL

### EHDR AD 2.8 APRONS, TAXIWAYS AND CHECK LOCATIONS/POSITIONS DATA

1	Apron surface and strength	ASPH/CONC 6000 KG.
2	Taxiway width, surface and strength	Width: 8 M. Surface: grass. Strength: Not AVBL.
3	Altimeter checkpoint location and elevation	NIL
4	VOR checkpoints	NIL
5	INS checkpoints	NIL
6	Remarks	NIL

### EHDR AD 2.9 SURFACE MOVEMENT GUIDANCE AND CONTROL SYSTEM AND MARKINGS

1	Use of aircraft stand ID signs, TWY guide lines and visual docking/parking guidance system at aircraft stands	NIL
2	RWY and TWY markings and LGT	<b>RWY markings</b> <ul style="list-style-type: none"> <li>RWY 07: DTHR, designation, CL, edge.</li> <li>RWY 25: DTHR, designation, CL, edge.</li> </ul>
3	Stop bars	NIL
4	Remarks	NIL

### EHDR AD 2.10 AERODROME OBSTACLES

For obstacles at and in the vicinity of the aerodrome see AD 2.EHDR-ADC.

### EHDR AD 2.12 RUNWAY PHYSICAL CHARACTERISTICS

Designations RWY NR	True BRG	Dimensions of RWY (M)	Strength (PCN) and sur- face of RWY and SWY	THR co-ordinates RWY end co-ordinates THR GUND	THR elevation and highest elevation of TDZ of precision APCH RWY
1	2	3	4	5	6
07	077°	954 x 24	6000 KG <sup>(1)(2)</sup> ASPH/CONC	Information not AVBL	NA
25	257°	954 x 24	6000 KG <sup>(1)(2)</sup> ASPH/CONC	Information not AVBL	NA

Designations RWY NR	Slope of RWY- SWY	SWY dimensions (M)	CWY dimensions (M)	Strip dimensions (M)	OFZ
1	7	8	9	10	11
07	NA	NA	NA	NA	NA
25	NA	NA	NA	NA	NA

Remarks
12
1) Bearing strength. 2) MAX tyre pressure 0.84 MPa.

### EHDR AD 2.13 DECLARED DISTANCES

RWY Designator	TORA (M)	TODA (M)	ASDA (M)	LDA (M)	Remarks
1	2	3	4	5	6
07	954	954	954	606	DTHR 348 M.
25	954	954	954	833	DTHR 121 M.

### EHDR AD 2.15 OTHER LIGHTING, SECONDARY POWER SUPPLY

1	ABN/IBN location, characteristics and hours of operation	NIL
2	LDI location and LGT Anemometer location and LGT	LDI and anemometer: 300 M NE from THR RWY 25.
3	TWY edge and centre line lighting	See EHDR AD 2.9.
4	Secondary power supply Switch-over time	NIL
5	Remarks	NIL

### EHDR AD 2.17 ATS AIRSPACE

1	Designation and lateral limits	NA
2	Vertical limits	NA
3	Airspace classification	G
4	ATS unit call sign Language(s)	NA
5	Transition altitude	IFR: 3000 FT AMSL; VFR: 3500 FT AMSL.
6	Hours of applicability	NA
7	Remarks	NIL

### EHDR AD 2.18 ATS COMMUNICATION FACILITIES

Service designation	Call sign	Channel/ Frequency (MHz)	Hours of operation	Remarks
1	2	3	4	5
Aerodrome information	Drachten Radio	119.655	See EHDR AD 2.3	NIL

## EHDR AD 2.22 VFR FLIGHT PROCEDURES AND REGULATIONS

### 1 VFR FLIGHT PROCEDURES AND REGULATIONS

**Note:** for visual approach chart see AD 2.EHDR-VAC.

#### 1.1 VFR traffic circuit area and traffic circuit

1. The minimum approach altitude for the aerodrome is 1014 FT AMSL (1000 FT AAL).
2. The circuit altitude is 714 FT AMSL (700 FT AAL).
3. The visual traffic circuit must be carried out within the lateral limits of the circuit area.
4. Built-up areas shall be avoided as much as possible.
5. Marked areas shall be avoided.
6. The circuit area may not be overflown below an altitude of 1014 FT AMSL (1000 FT AAL).

RWY 25

1. Righthand circuit.
2. Entry/exit procedures as depicted on chart AD 2.EHDR-VAC.

RWY 07

1. Lefthand circuit.
2. Entry/exit procedures as depicted on chart AD 2.EHDR-VAC.

## EHDR AD 2.23 ADDITIONAL INFORMATION

### 1 CAUTIONS AND ADDITIONAL INFORMATION

1. Grass cutting may take place at irregular times.
2. Circuit flights are allowed:
  - APR-SEP MON-FRI: during OPR HR;  
SAT: 0800-1500;  
SUN, Easter Monday, Ascension Day, Whit Monday: 1000-1500.
  - OCT-MAR MON-SUN: during OPR HR.
3. Simultaneous use of the manoeuvring area is prohibited during the movement of an aircraft with a wingspan of 15 M or more, due to the distance between runway and taxiway centrelines of 47.5 M.
4. For aircraft MTOM > 472.5 KG landing on RWY 07, the following applies:
  - 100 HR PIC required;
  - student pilots solo flights not allowed.

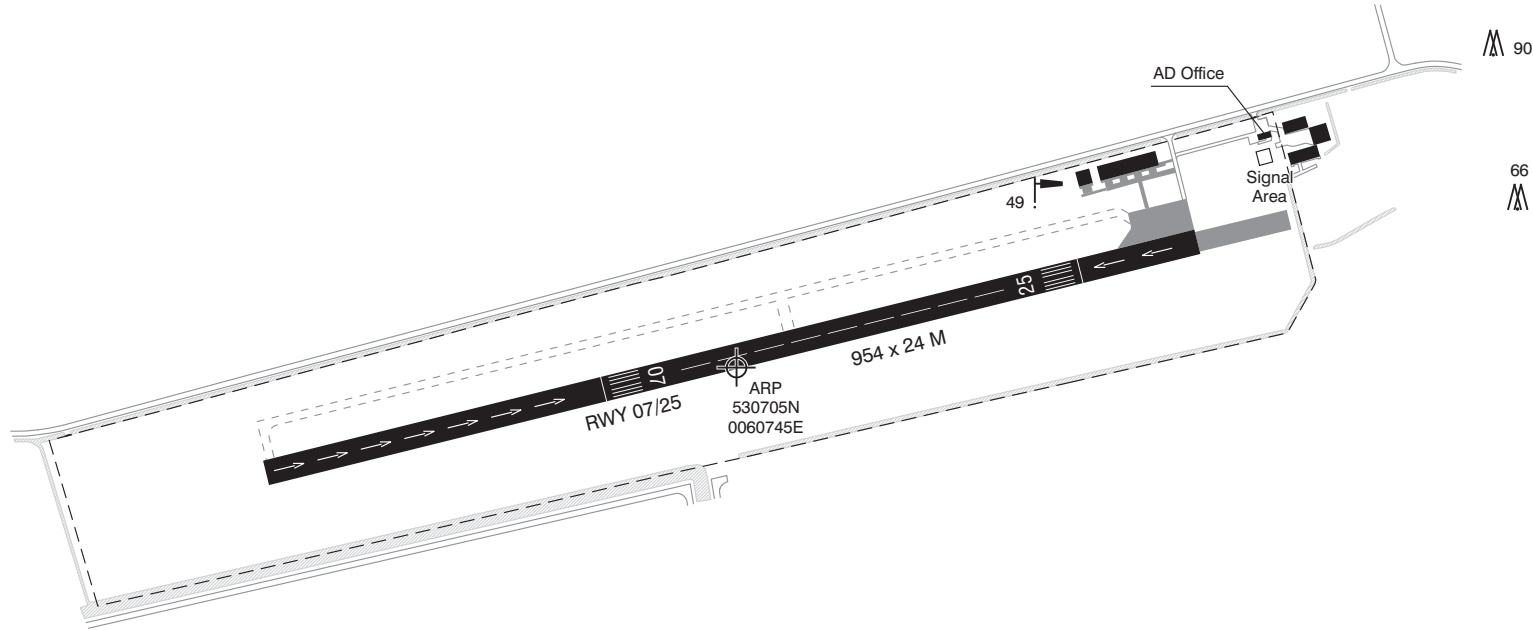
## EHDR AD 2.24 CHARTS RELATED TO AN AERODROME

Type of chart	Page
Aerodrome chart	AD 2.EHDR-ADC
Visual approach chart	AD 2.EHDR-VAC

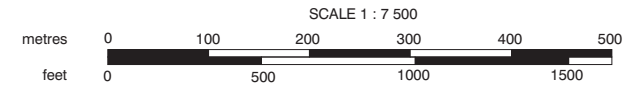
AD ELEV 14

AD info 119.655 Drachten Radio

VAR 2° E (2020)  
ANNUAL RATE OF CHANGE 10' E



DIRECTIONS ARE MAGNETIC  
ELEVATIONS IN FEET AMSL  
DIMENSIONS IN METRES

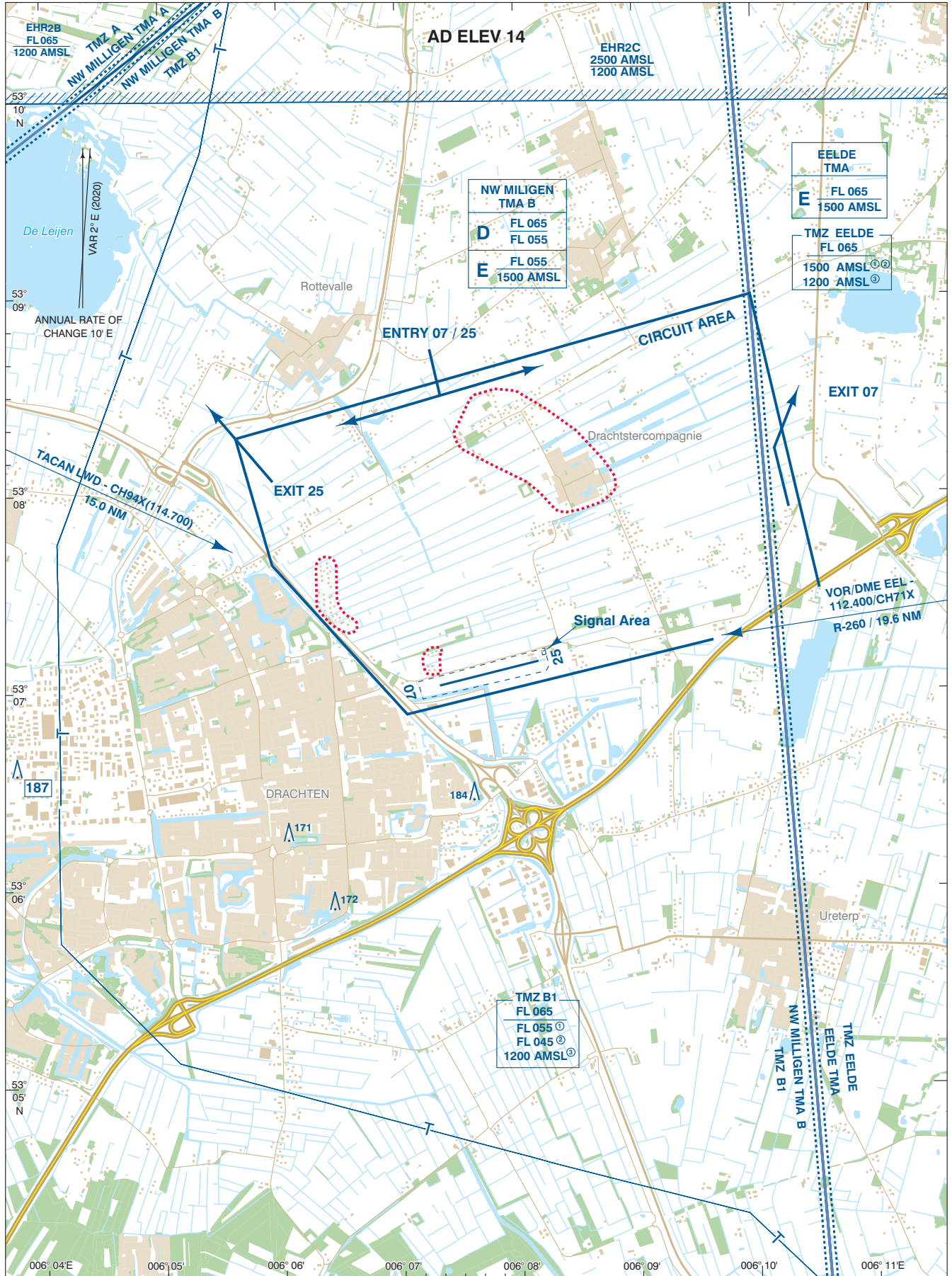


LIGHTING AIDS: None.  
CAUTION: Grass cutting may take place at irregular times.

PHYSICAL CHARACTERISTICS				
RWY	DIRECTION	MAX A UW	MAX TYRE PRESS	SURFACE
07	075°	6000 kg	0.84 MPa	ASPH/ CONC
25	255°	6000 kg	0.84 MPa	ASPH/ CONC

CHANGE: DTHR; RWY dimensions; editorial.





SCALE 1: 50 000

M 1000 0 1000  
FT 2000 0 2000 4000

DIRECTIONS ARE MAGNETIC  
DISTANCES IN NM  
ALTITUDES AND ELEVATIONS  
IN FEET AMSL

HIGHEST KNOWN ELEVATION  
ON THIS CHART: **187**

**For description VFR - procedures see EHDR AD 2.22.**

① MON-FRI before 0800 (0700) and after 1600 (1500), SAT, SUN, and HOL.  
 ② MON-FRI 0800-1600 (0700-1500), EXC HOL: lower limit for non-motorised hanggliders and paragliders.  
 ③ MON-FRI 0800-1600 (0700-1500), EXC HOL: lower limit 1200 FT AMSL.  
 ④ Only active MON-FRI 0800-1600 (0700-1500), EXC HOL.

AD Info	119.655	Drachten Radio
FIC (MIL)	132.350	Dutch MIL info
Area to be avoided		

CHANGE: circuit area, entry 07 and exit 25, areas to be avoided; editorial.

