

EHHE — EEMSHAVEN HELIPORT

Note: the following sections in this chapter are intentionally left blank:
AD 3.18.

EHHE AD 3.1 HELIPORT LOCATION INDICATOR AND NAME**EHHE — EEMSHAVEN HELIPORT****EHHE AD 3.2 HELIPORT GEOGRAPHICAL AND ADMINISTRATIVE DATA**

1	HRP co-ordinates and site at HLP	532739N 0064852E Centre of TLOF.
2	Direction and distance from (city)	1 NM N of Eemshaven
3	Elevation/reference temperature	17 FT AMSL/INFO not AVBL.
4	Geoid undulation at HLP ELEV PSN	INFO not AVBL.
5	MAG VAR/annual change	2°E (2020)/10'E.
6	HLP operator, postal address, telephone, telefax, email, AFS, website	Post: EMS Maritime Offshore Borkumkade 5B 9979 XX Eemshaven The Netherlands Tel: +31 (0)6 1568 1312 +49 151 5851 4058 ¹⁾ URL: www.heliport-eemshaven.de Email: heliport@offshoreservice.de
7	Types of traffic permitted (IFR/VFR)	VFR
8	Remarks	Prior permission required (PPR). ¹⁾ In case of no reply from the above-mentioned TEL NR.

EHHE AD 3.3 OPERATIONAL HOURS

1	HLP operator	Daily 0700-1600 (0600-1500) but within UDP and PPR. Outside OPR HR (within UDP): PPR, request to be made within OPR HR. H24 for HEMS and SAR flights: 1 HR PPR.
2	Customs and immigration	HLP OPR HR, 1 HR PN ¹⁾ .
3	Health and sanitation	NA
4	AIS briefing office	H24 Tel: +31 (0)20 406 2315 URL: https://www.homebriefing.nl
5	ATS reporting office (ARO)	Competent ATS unit: ARO Schiphol, see EHAM AD 2.3.
6	MET briefing office	NA
7	ATS	NA
8	Fuelling	HLP OPR HR.
9	Handling	HLP OPR HR.
10	Security	NA
11	De-icing	NA
12	Remarks	¹⁾ PN means permission from and/or in case of customs etc. notification other than by (VFR) flight plans to aerodrome authority as appropriate.

EHHE AD 3.4 HANDLING SERVICES AND FACILITIES

1	Cargo-handling facilities	NIL
2	Fuel/oil types	Jet A-1/INFO not AVBL.
3	Fuelling facilities/capacity	Stand B: self-service/40 000 litres.
4	De-icing facilities	NIL
5	Hangar space for visiting helicopters	NIL

6	Repair facilities for visiting helicopters	NIL
7	Remarks	NIL

EHHE AD 3.5 PASSENGER FACILITIES

1	Hotels	In Roodeschool.
2	Restaurants	In Eemshaven.
3	Transportation	Taxis, train station in Eemshaven.
4	Medical facilities	First aid treatment, hospitals in Groningen.
5	Bank and post office	In Uithuizen and Delfzijl.
6	Tourist office	In Delfzijl.
7	Remarks	NIL

EHHE AD 3.6 RESCUE AND FIRE FIGHTING SERVICES

1	HLP category for fire fighting	H2
2	Rescue equipment	AVBL
3	Capability for removal of disabled helicopters	AVBL via contractors.
4	Remarks	NIL

EHHE AD 3.7 SEASONAL AVAILABILITY - CLEARING

1	Types of clearing equipment	Multifunctional terrain vehicle.
2	Clearance priorities	1. TLOF and FATO 2. TWY 3. apron
3	Remarks	NIL

EHHE AD 3.8 APRONS, TAXIWAYS AND CHECK LOCATIONS/POSITIONS DATA

1	Apron, helicopter stands designation, surface and strength	Stands A and B: Surface: concrete. Strength: MTOM 10 600 KG.
2	Ground taxiway designation, width and surface	Designation: NIL. Width: 5 M on straight, 7 M in bends. Surface: concrete.
3	Air taxiway and air transit route designation and width	NIL.
4	Altimeter checkpoint location and elevation	NIL
5	VOR checkpoints	NIL
6	INS checkpoints	NIL
7	Remarks	For stands A and B: Touchdown/positioning area: 20 M diameter. Protection zone: 40 M diameter.

EHHE AD 3.9 MARKINGS AND MARKERS

1	Final approach and take-off markings	FATO: red-white FATO perimeter markers. TLOF: white circular TLOF marking; white heliport identification marking; yellow touchdown marking; D-value.
2	Taxiway markings, air taxiway markers and air transit route markers	Yellow TWY CL marking and HLDG PSN.
3	Remarks	NIL

EHHE AD 3.10 HELIPORT OBSTACLES

OBST ID/ Designation	OBST Type	OBST Position	ELEV/HGT in FT		Markings/ LGT Type, Colour
			AMSL	AGL	
1	2	3	4		5
EHHE001	Building	532745.3N 0064855.5E	118	103	NIL
EHHE002	Pole	532738.0N 0064851.6E	34	20	OBST/R
EHHE003	Pole	532741.7N 0064851.0E	64	49	OBST/R
EHHE004	Tower	532735.3N 0064858.0E	-	129	NIL
EHHE005	Tower	532734.2N 0064848.3E	-	165	NIL

Remarks

6

- No obstacle data sets AVBL.
- Several wind turbines at 500 M in sector BTN E and SW of heliport, ELEV 476 FT AMSL. Wind turbines are located outside flight path.

EHHE AD 3.11 METEOROLOGICAL INFORMATION PROVIDED

1	Associated MET office	INFO not AVBL.
2	Hours of service MET office outside hours	INFO not AVBL.
3	Office responsible for TAF preparation Periods of validity	INFO not AVBL.
4	Trend forecast Interval of issuance	INFO not AVBL.
5	Briefing/consultation provided	INFO not AVBL.
6	Flight documentation Language(s) used	INFO not AVBL.
7	Charts and other information available for briefing or consultation	INFO not AVBL.
8	Supplementary equipment available for providing information	INFO not AVBL.
9	ATS units provided with information	INFO not AVBL.
10	Additional information (limitation of service, etc.)	INFO not AVBL.

EHHE AD 3.12 HELIPORT DATA

1	Heliport type	Surface level.
2	TLOF dimensions	Diameter of 21 M.
3	FATO, GEO bearing	FATO 09: 090.00° GEO. FATO 24: 240.00° GEO.
4	FATO dimensions and surface	Dimensions: 48 x 48 M Surface: grass
5	TLOF surface and bearing strength	Surface: concrete Strength: 10.6 tonnes.
6	Co-ordinates and geoid undulation of geometric centre TLOF or threshold of FATO	532739.00N 0064852.00E Geoid undulation: INFO not AVBL.
7	TLOF and/or FATO elevation and slope	TLOF elevation: 17 FT. TLOF slope: NIL.
8	Safety area dimensions	51 x 51 M
9	Helicopter clearway dimensions	INFO not AVBL.
10	Obstacle-free sector	INFO not AVBL.
11	Remarks	NIL.

EHHE AD 3.13 DECLARED DISTANCES

FATO Designator	TODAH (M)	RTODAH (M)	LDAH (M)	Remarks
1	2	3	4	5
09	48	48	48	NIL

FATO Designator	TODAH (M)	RTODAH (M)	LDAH (M)	Remarks
1	2	3	4	5
24	48	48	48	NIL

EHHE AD 3.14 APPROACH AND FATO LIGHTING

1	Approach lighting system type, length, intensity	NIL
2	Type of visual approach slope indicator system	NIL
3	FATO area lighting characteristics and location	NIL
4	Aiming point lighting characteristics and location	NIL
5	TLOF lighting system characteristics and location	Perimeter lights: green. Floodlights: white.
6	Remarks	Lighting can be switched on on request.

EHHE AD 3.15 OTHER LIGHTING AND SECONDARY POWER SUPPLY

1	Heliport BCN location, characteristics and hours of operation	NIL
2	WDI location and LGT	S of FATO/R obstruction light.
3	TWY edge and centre line lighting	TWY edge: blue edge lights. Centre line: NIL.
4	Secondary power supply Switch-over time	NIL
5	Remarks	NIL

EHHE AD 3.16 AIR TRAFFIC SERVICE AIRSPACE

1	Designation and lateral limits	NA
2	Vertical limits	NA
3	Airspace classification	G
4	ATS unit call sign Language(s)	NA
5	Transition altitude	IFR: 3000 FT AMSL; VFR: 3500 FT AMSL.
6	Hours of applicability	NA
7	Remarks	NIL

EHHE AD 3.17 AIR TRAFFIC SERVICES COMMUNICATION FACILITIES

Service designation	Call sign	Channel/ Frequency (MHz)	SATVOICE number(s)	Logon address	Hours of operation	Remarks
1	2	3	4	5	6	7
Aerodrome information	Eemshaven Radio	121.715	NIL	NIL	EHHE AD 3.3	Contact Eemshaven Radio 5 MIN before arrival.

EHHE AD 3.19 LOCAL HELIPORT REGULATIONS

For more information, refer to the mandatory EHHE - Mandatory Pilot Briefing document on the heliport website.

EHHE AD 3.20 NOISE ABATEMENT PROCEDURES

In order to prevent wildlife and noise nuisance, arrival and departure routes S of the heliport are prohibited.

EHHE AD 3.21 FLIGHT PROCEDURES

1 VFR FLIGHT PROCEDURES AND REGULATIONS

- Standard helicopter operating procedures and practises apply.

2. Motorised civil traffic above the natural area Waddenzee below 1500 FT AGL is not allowed, excluding aerodrome traffic (see ENR 5.6 paragraph 2 and chart ENR 6-5.3).
3. The NOVEMBER arrival/departure is mandatory. Maintain a good lookout and listening watch on Eemshaven Radio.
4. Arrival procedure:
 - Report 5 minutes prior reaching NOVEMBER to Eemshaven Radio;
 - Maintain as long as possible MNM 1500 FT AMSL before starting the descent for landing.
5. Departure procedure:
 - Report 5 minutes before rotor start to Eemshaven Radio;
 - Climb ASAP to MNM 1500 FT AMSL via the mandatory route to NOVEMBER.
6. VFR reporting points positions:

VFR reporting point	Position
NOVEMBER	532846N 0065007E
ECHO	532749N 0064914E
WHISKEY	532815N 0064835E

2 RADIO PROCEDURES

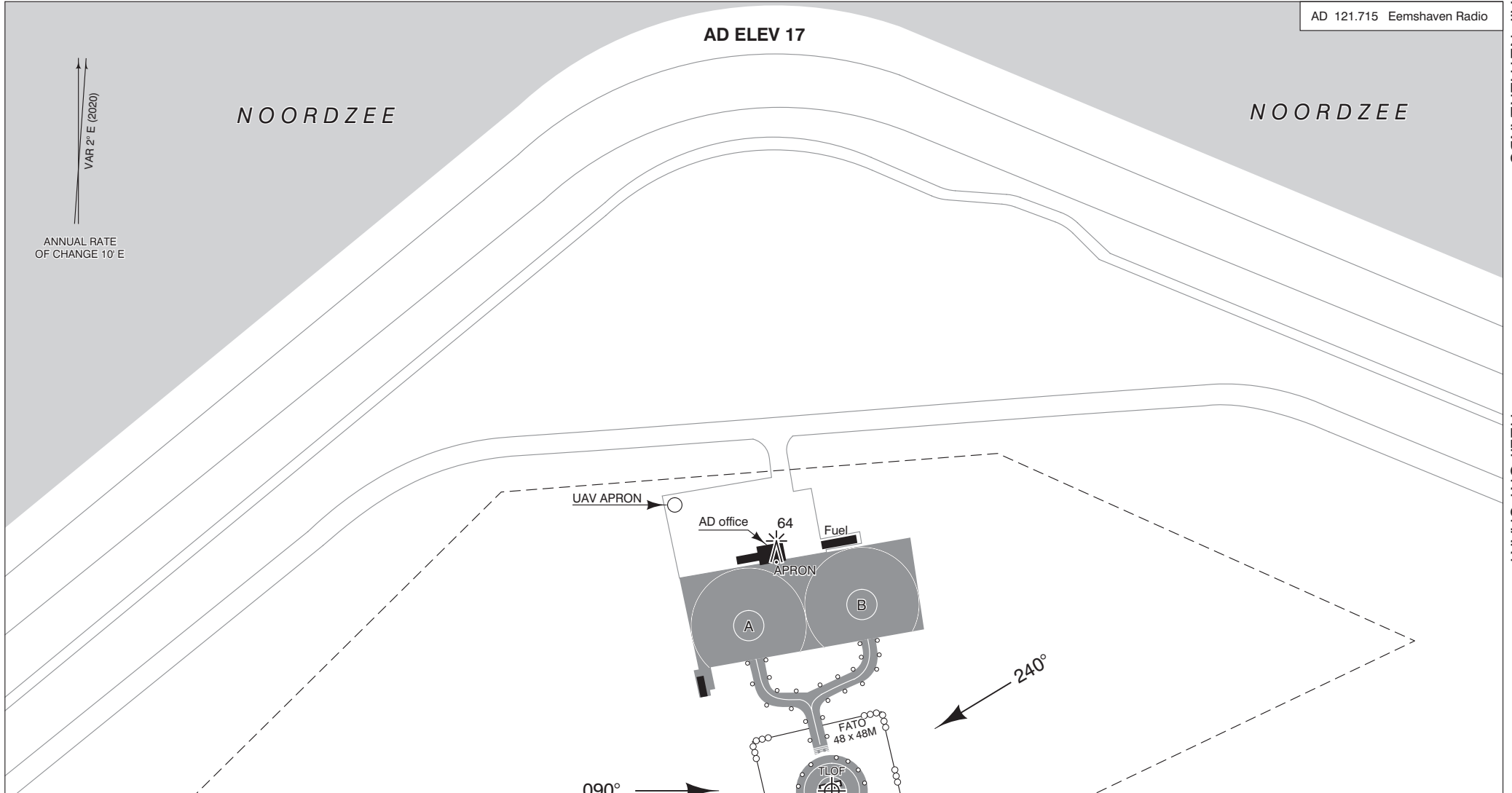
1. Two-way radio contact is mandatory.
2. Arriving traffic shall contact Eemshaven Radio 5 MIN before ETA.
3. Departing traffic shall report Eemshaven Radio before start-up, start taxiing, and taking-off.

EHHE AD 3.22 ADDITIONAL INFORMATION

- Beware of possible turbulence in the vicinity of the wind turbine NE of AD during winds from 090°-180°.
- Beware of kite surfers 500 M NW of the heliport.
- Possible activities of unmanned aircraft systems (UAS) at or in vicinity of the heliport.
- Bird sanctuary located W of heliport. Bird strike risk during all seasons.

EHHE AD 3.23 CHARTS RELATED TO A HELIPORT

Type of chart	Page
Aerodrome/Heliport chart	AD 3.EHHE-ADC
Visual approach chart	AD 3.EHHE-VAC



NOORDZEE

NOORDZEE

AD ELEV 17

VAR 2° E (2020)

ANNUAL RATE OF CHANGE 10' E

UAV APRON

AD office

64

Fuel

APRON

A

B

FATO
48 x 48M

TLOF
ARP
532739N
0064852E

34

090°

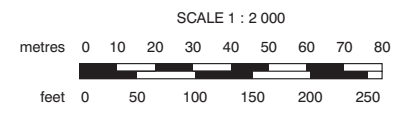
240°

HELIPORT TYPE: SURFACE LEVEL

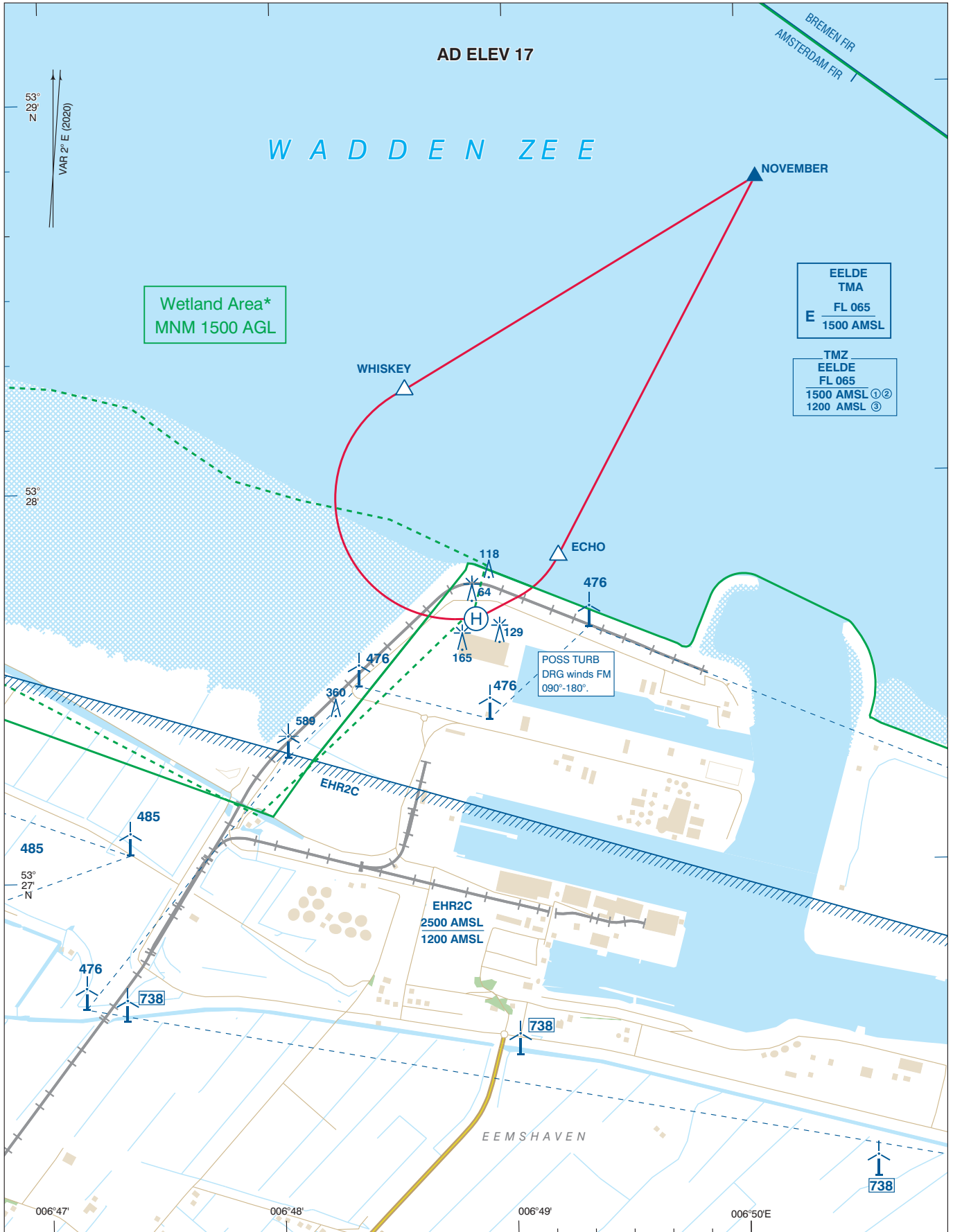
PHYSICAL CHARACTERISTICS					DECLARED DISTANCES		
FATO	BEARING	DIMENSIONS	SURFACE	SLOPE	TODAH (M)	RTODAH (M)	LDAH (M)
09	090°	48 x 48 M	GRASS	0%	48	48	48
24	240°						

TLOF (CENTRE)	DIMENSIONS	SLOPE	SURFACE	STRENGTH	Elevation
532739N 0064852E	21 M Ø	0%	CONCRETE	10.6 TONNES (MTOM)	17 FT

NOTES:
Apron surface: concrete
Safety area: 51 x 51 M



DIRECTIONS ARE MAGNETIC
DISTANCES IN NM
ALTITUDES AND ELEVATIONS
IN FEET



For description VFR - procedures see EHHE AD 3.21.

NOTE:

*For motorised civil air traffic above the natural area Waddenzee the following applies:

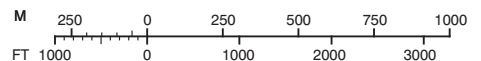
- flights below 1500 FT AGL are not allowed (not applicable to this part of the flight necessary to depart from or land at an aerodrome).

TMZ EELDE :

- Ⓞ MON-FRI before 0800 (0700) and after 1600 (1500), SAT, SUN, and HOL.
- Ⓞ MON-FRI 0800-1600 (0700-1500), EXCL HOL: lower limit for non-motorised hanggliders and paragliders.
- Ⓞ MON-FRI 0800-1600 (0700-1500), EXCL HOL: lower limit 1200 FT AMSL.

AD info	121.715	Eemshaven Radio
APP	120.305	Eelde Approach

SCALE 1 : 25 000



DIRECTIONS ARE MAGNETIC
DISTANCES IN NM
ALTITUDES AND ELEVATIONS
IN FEET AMSL

HIGHEST KNOWN ELEVATION
ON THIS CHART: **738**

Bird sanctuary (GND/MSL - 1000 FT AMSL)
 Wetland Area

