

## AD 2 AERODROMES

## EHAL — AMELAND/Ameland

Note: the following sections in this chapter are intentionally left blank:  
AD 2.7, AD 2.8, AD 2.11, AD 2.14, AD 2.19, AD 2.21.

## EHAL AD 2.1 AERODROME LOCATION INDICATOR AND NAME

EHAL — AMELAND/Ameland

## EHAL AD 2.2 AERODROME GEOGRAPHICAL AND ADMINISTRATIVE DATA

1	ARP co-ordinates and site at AD	532706N 0054038E
2	Direction and distance from (city)	Western part of the island Ameland.
3	Elevation/reference temperature	11 FT AMSL/19.4°C.
4	Geoid undulation at AD ELEV PSN	Not AVBL.
5	MAG VAR/annual change	2°E (2020)/10'E.
6	AD operator, postal address, telephone, telefax, email, AFS, website	Post: Municipality of Ameland P.O. Box 22 9160 AA Hollum, Ameland The Netherlands Tel: +31 (0)519 554 030 Email: info@ehal.nl URL: <a href="https://www.ameland.nl/vliegveld">https://www.ameland.nl/vliegveld</a>
7	Types of traffic permitted (IFR/VFR)	VFR
8	Remarks	1. Aerodrome available for use by national civil air traffic with all types of aircraft up to MAX 6000 KG and gliders. 2. Flights between EHAL and Schengen Treaty countries permitted. The import, export and transit of cargo is not allowed.

## EHAL AD 2.3 OPERATIONAL HOURS

1	AD operator	MON-SUN: - (0730-1700) but within UDP. <b>Note:</b> PN required; PPR between - (1600-1700). <b>Note:</b> During winter period: limited AVBL, 1 hour PPR.
2	Customs and immigration	NA
3	Health and sanitation	NA
4	AIS briefing office	H24 Tel: +31 (0)20 406 2315 URL: <a href="https://www.homebriefing.nl">https://www.homebriefing.nl</a>
5	ATS reporting office (ARO)	Competent ATS unit: ARO Schiphol, see EHAM AD 2.3.
6	MET briefing office	NA
7	ATS	NA
8	Fuelling	AD OPR HR.
9	Handling	NA
10	Security	NA
11	De-icing	NA
12	Remarks	NIL

## EHAL AD 2.4 HANDLING SERVICES AND FACILITIES

1	Cargo-handling facilities	NIL
2	Fuel/oil types	AVGAS 100LL, MOGAS Euro 98, (Jet A-1 O/R) /-.

3	<b>Fuelling facilities/capacity</b>	AVGAS 100LL: 12 000 litres, 80 litres/MIN; MOGAS Euro 98: 10 000 litres, 80 litres/MIN; Jet A-1: 8000 litres, 80 litres/MIN.
4	<b>De-icing facilities</b>	NIL
5	<b>Hangar space for visiting aircraft</b>	Limited AVBL.
6	<b>Repair facilities for visiting aircraft</b>	NIL
7	<b>Remarks</b>	NIL

### EHAL AD 2.5 PASSENGER FACILITIES

1	<b>Hotels</b>	On the island.
2	<b>Restaurants</b>	In Ballum.
3	<b>Transportation</b>	Bus and taxi.
4	<b>Medical facilities</b>	First aid AVBL.
5	<b>Bank and post office</b>	In Nes.
6	<b>Tourist office</b>	Post: VVV Ameland Bureweg 2 9163 KE Nes, Ameland Tel: +31 (0)519 546 546 URL: www.vvvameland.nl
7	<b>Remarks</b>	NIL

### EHAL AD 2.6 RESCUE AND FIRE FIGHTING SERVICES

1	<b>AD category for fire fighting</b>	CAT 2.
2	<b>Rescue equipment</b>	1 fire truck.
3	<b>Capability for removal of disabled aircraft</b>	NIL
4	<b>Remarks</b>	NIL

### EHAL AD 2.9 SURFACE MOVEMENT GUIDANCE AND CONTROL SYSTEM AND MARKINGS

1	<b>Use of aircraft stand ID signs, TWY guide lines and visual docking/parking guidance system at aircraft stands</b>	NIL
2	<b>RWY and TWY markings and LGT</b>	THR: white markers. RWY: white cones. TWY: blue cones.
3	<b>Stop bars</b>	NIL
4	<b>Remarks</b>	NIL

### EHAL AD 2.10 AERODROME OBSTACLES

For obstacles at and in the vicinity of the aerodrome see AD 2.EHAL-ADC.

### EHAL AD 2.12 RUNWAY PHYSICAL CHARACTERISTICS

Designations RWY NR	True BRG	Dimensions of RWY (M)	Strength (PCN) and sur- face of RWY and SWY	THR co-ordinates RWY end co-ordinates THR GUND	THR elevation and highest elevation of TDZ of precision APCH RWY
1	2	3	4	5	6
08	087°	860 x 30	6000 KG <sup>(1) 2) 3)</sup> ; grass	Not AVBL	NA
26	267°	860 x 30	6000 KG <sup>(1) 2) 3)</sup> ; grass	Not AVBL	NA

Designations RWY NR	Slope of RWY- SWY	SWY dimensions (M)	CWY dimensions (M)	Strip dimensions (M)	OFZ
1	7	8	9	10	11
08	NA	NA	NA	NA	NA
26	NA	NA	NA	NA	NA

Remarks
12
<sup>1)</sup> Bearing strength. <sup>2)</sup> MAX tyre pressure 0.35 MPa. <sup>3)</sup> ICAO RWY classification: 2b.

### EHAL AD 2.13 DECLARED DISTANCES

RWY Designator	TORA (M)	TODA (M)	ASDA (M)	LDA (M)	Remarks
1	2	3	4	5	6
08	860	860	860	860	NIL
26	860	860	860	860	NIL

### EHAL AD 2.15 OTHER LIGHTING, SECONDARY POWER SUPPLY

1	ABN/IBN location, characteristics and hours of operation	NIL
2	LDI location and LGT Anemometer location and LGT	LDI and anemometer: 500 M S from THR RWY 26, unlighted.
3	TWY edge and centre line lighting	NIL
4	Secondary power supply Switch-over time	NIL
5	Remarks	NIL

### EHAL AD 2.16 HELICOPTER LANDING AREA

1	Co-ordinates TLOF or THR of FATO Geoid undulation	NIL Information not AVBL.
2	TLOF and/or FATO elevation M/FT	NIL
3	TLOF and FATO area dimensions, surface, strength, marking	NIL
4	True BRG of FATO	NIL
5	Declared distance available	NIL
6	APCH and FATO lighting	Pilot controlled lighting (see EHAL AD 2.23).
7	Remarks	Helicopter landing area 400 M SSW from THR RWY 26. Heliport available for HEMS flights only.

### EHAL AD 2.17 ATS AIRSPACE

1	Designation and lateral limits	NA
2	Vertical limits	NA
3	Airspace classification	G
4	ATS unit call sign Language(s)	NA
5	Transition altitude	IFR: 3000 FT AMSL; VFR: 3500 FT AMSL.
6	Hours of applicability	NA
7	Remarks	NIL

### EHAL AD 2.18 ATS COMMUNICATION FACILITIES

Service designation	Call sign	Channel/ Frequency (MHz)	Hours of operation	Remarks
1	2	3	4	5
Aerodrome Information	Ameland Radio	118.355	See EHAL AD 2.3.	NIL

## EHAL AD 2.20 LOCAL AERODROME REGULATIONS

### 1 TAXI PROCEDURES

Taxiing outside the marked ways is not allowed.

## EHAL AD 2.22 FLIGHT PROCEDURES

### 1 VFR FLIGHT PROCEDURES AND REGULATIONS

1. The minimum approach altitude for the aerodrome is 1011 FT AMSL (1000 FT AAL).
2. The circuit altitude is 711 FT AMSL (700 FT AAL).
3. Helicopters shall avoid low flying above the solar farm:
  - civil helicopters join and leave via the circuit;
  - rescue helicopters allowed for direct approach to the helispot, with sufficient altitude.
4. Departing aircraft are requested to turn as soon (and safe) as possible towards the North Sea and continue to climb along the coastline.
5. For motorised civil air traffic above the natural area Waddenzee the following applies:
  - flights below 1500 FT AGL are not allowed;
  - when ceiling < 1500 FT AGL or flight visibility < 8 KM, flights between 1000 FT AGL and 1500 FT AGL are allowed within the corridors depicted on chart ENR 6-5.3 (see ENR 5.6 paragraph 2).
6. Two-way radio communication with Ameland Radio is strongly recommended due to combined operations of motorised traffic and gliders.

## EHAL AD 2.23 ADDITIONAL INFORMATION

### 1 CAUTION AND ADDITIONAL INFORMATION

1. Intensive flights may take place by military aircraft or offshore helicopters in the area covered by the chart AD 2.EHAL-VAC.
2. Intensive parachute jumping may take place, this will be promulgated by NOTAM or supplement.
3. In the period JUN-AUG intensive glider activities with winch and tow starts.
4. Use caution while taxiing on TWY A: landing gliders might cross TWY A at low altitude.
5. TWY D closed during glider activities.
6. Possible sun reflection and glare caused by solar panels in southwest corner of the aerodrome.
7. Grass cutting may take place at irregular times.

### 2 PILOT CONTROLLED LIGHTING

To operate the pilot controlled heliport lighting select 118.355 and click the (push-to-talk) microphone switch repeatedly.

- Switch on heliport lighting: 5 clicks within 5 SEC. The lights remain on for 15 MIN.
- Switch off heliport lighting: 3 clicks within 5 SEC.

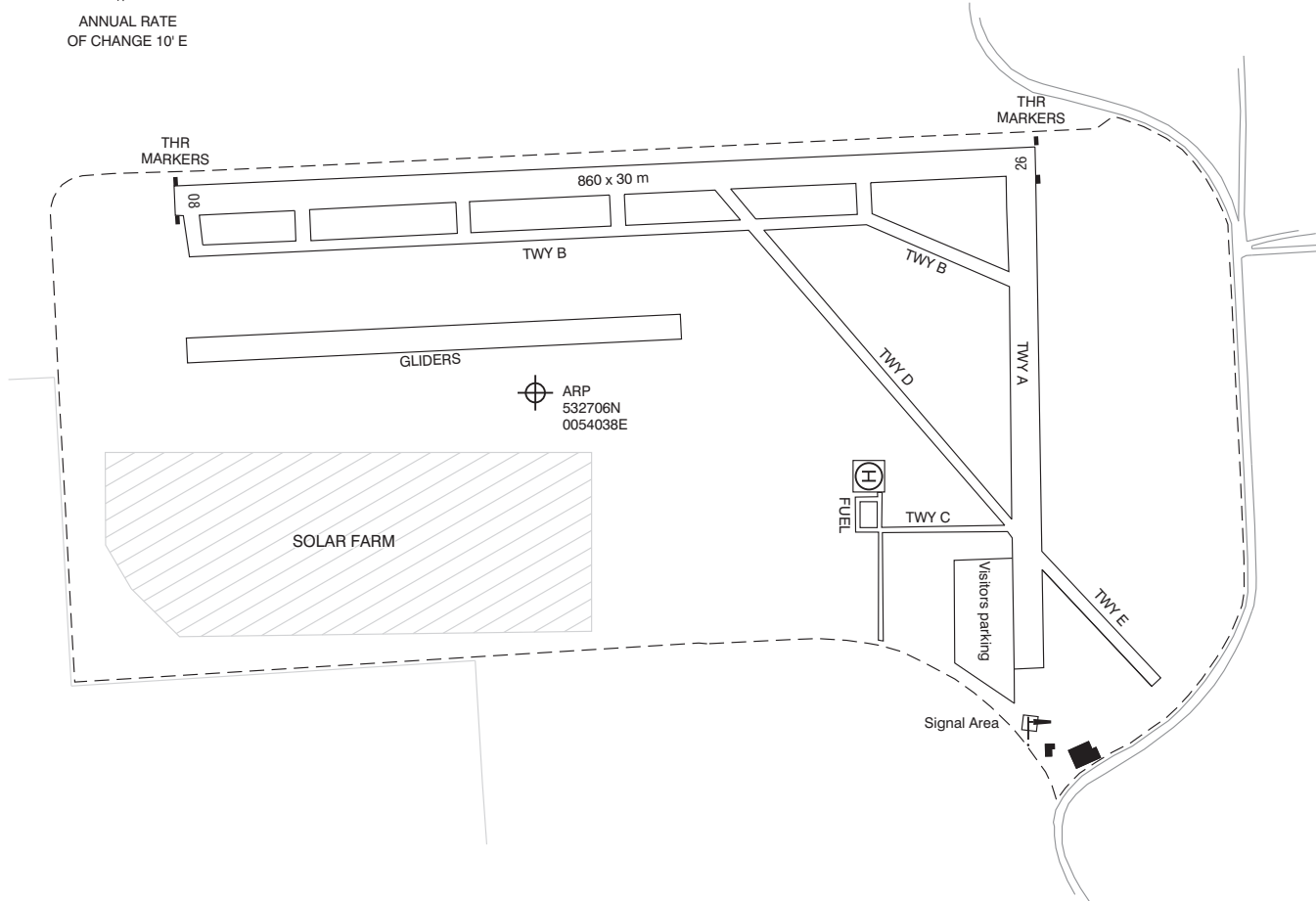
## EHAL AD 2.24 CHARTS RELATED TO AN AERODROME

Type of chart	Page
Aerodrome chart	AD 2.EHAL-ADC
Visual approach chart	AD 2.EHAL-VAC

AD ELEV 11

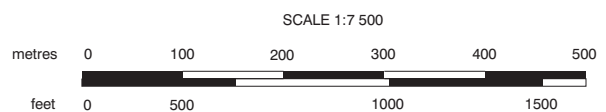
AD info 118.355 Ameland Radio

VAR 2° E (2020)  
ANNUAL RATE  
OF CHANGE 10' E



PHYSICAL CHARACTERISTICS				
RWY	DIRECTION	MAX A UW	MAX TYRE PRESS	SURFACE
08	085°	6000 kg	0.35 MPa	GRASS
26	265°	6000 kg	0.35 MPa	GRASS

DIRECTIONS ARE MAGNETIC  
ELEVATIONS IN FEET AMSL  
DIMENSIONS IN METRES

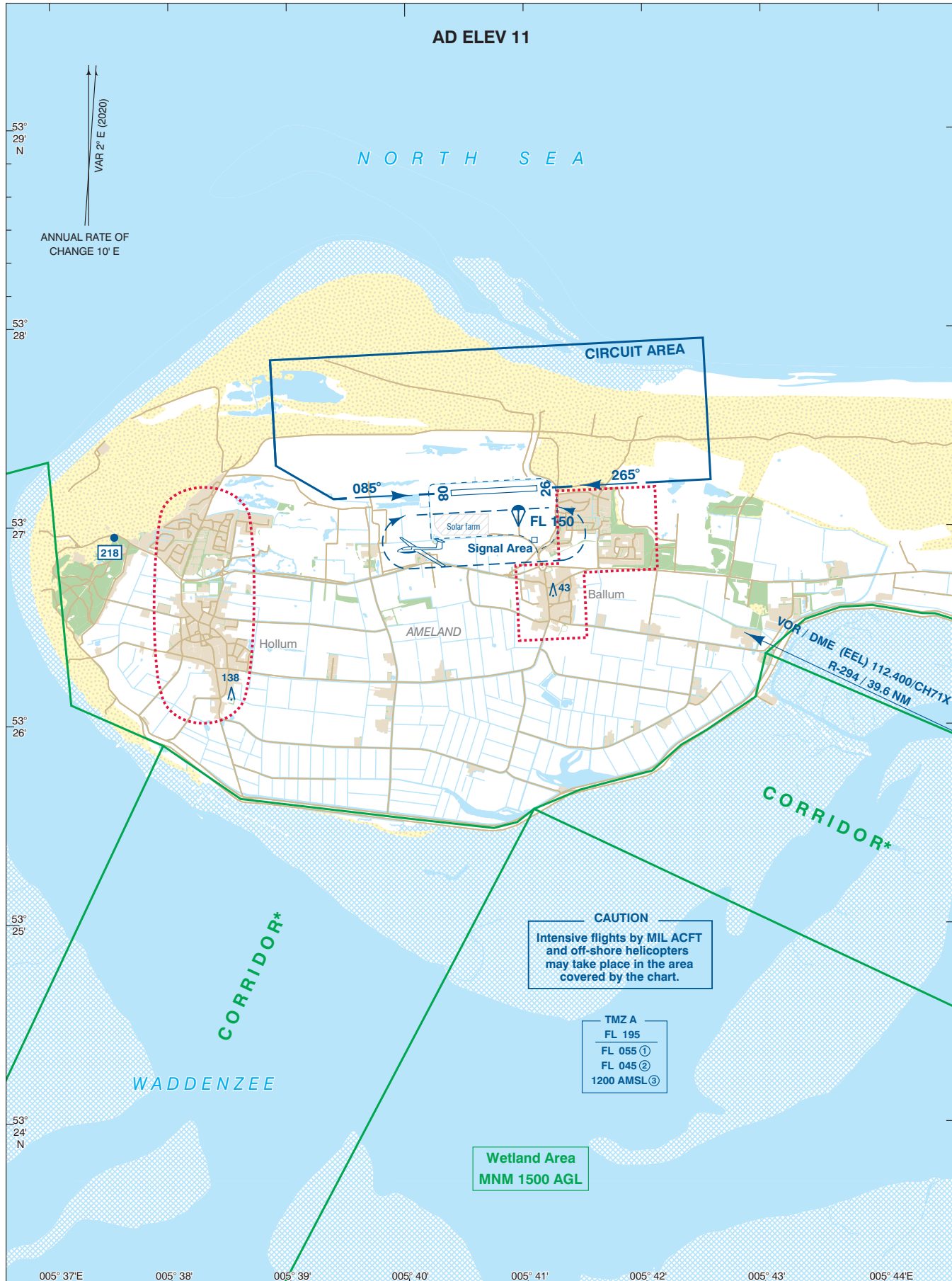


**LIGHTING AIDS**  
RWY: None.  
Heliport: Green perimeter lights.  
PCL; see EHAL AD 2.23.

**MARKING AIDS**  
THR: White markers.  
RWY: White cones.  
TWY: Blue cones.

- CAUTION:**
1. Use caution while taxiing on TWY A: landing gliders might cross TWY A at low altitude.
  2. TWY D closed during glider activities.
  3. Grass cutting may take place at irregular times.





For description VFR - procedures see EHAL AD 2.22.

**NOTE:**

- \* For motorised civil air traffic above the natural area Waddenzee the following applies:
  - flights below 1500 FT AGL are not allowed.
  - when ceiling < 1500 FT AGL or flight visibility < 8 KM, flights between 1000 FT AGL and 1500 FT AGL are allowed within the corridors.

**TMZ A:**

- ① MON-FRI before 0800 (0700) and after 1600 (1500), SAT, SUN and HOL.
- ② MON-FRI 0800-1600 (0700-1500), EXCL HOL: lower limit for non-motorised hanggliders and paragliders.
- ③ MON-FRI 0800-1600 (0700-1500), EXCL HOL: lower limit 1200 AMSL.

- Area to be avoided
- Wetland Area

AD Info 118.355 Ameland Radio  
FIC (MIL) 132.350 Dutch MIL Info

DIRECTIONS ARE MAGNETIC  
DISTANCES IN NM  
ALTITUDES AND ELEVATIONS  
IN FEET AMSL  
HIGHEST KNOWN ELEVATION  
ON THIS CHART: **[218]**

