

AD ELEV -11

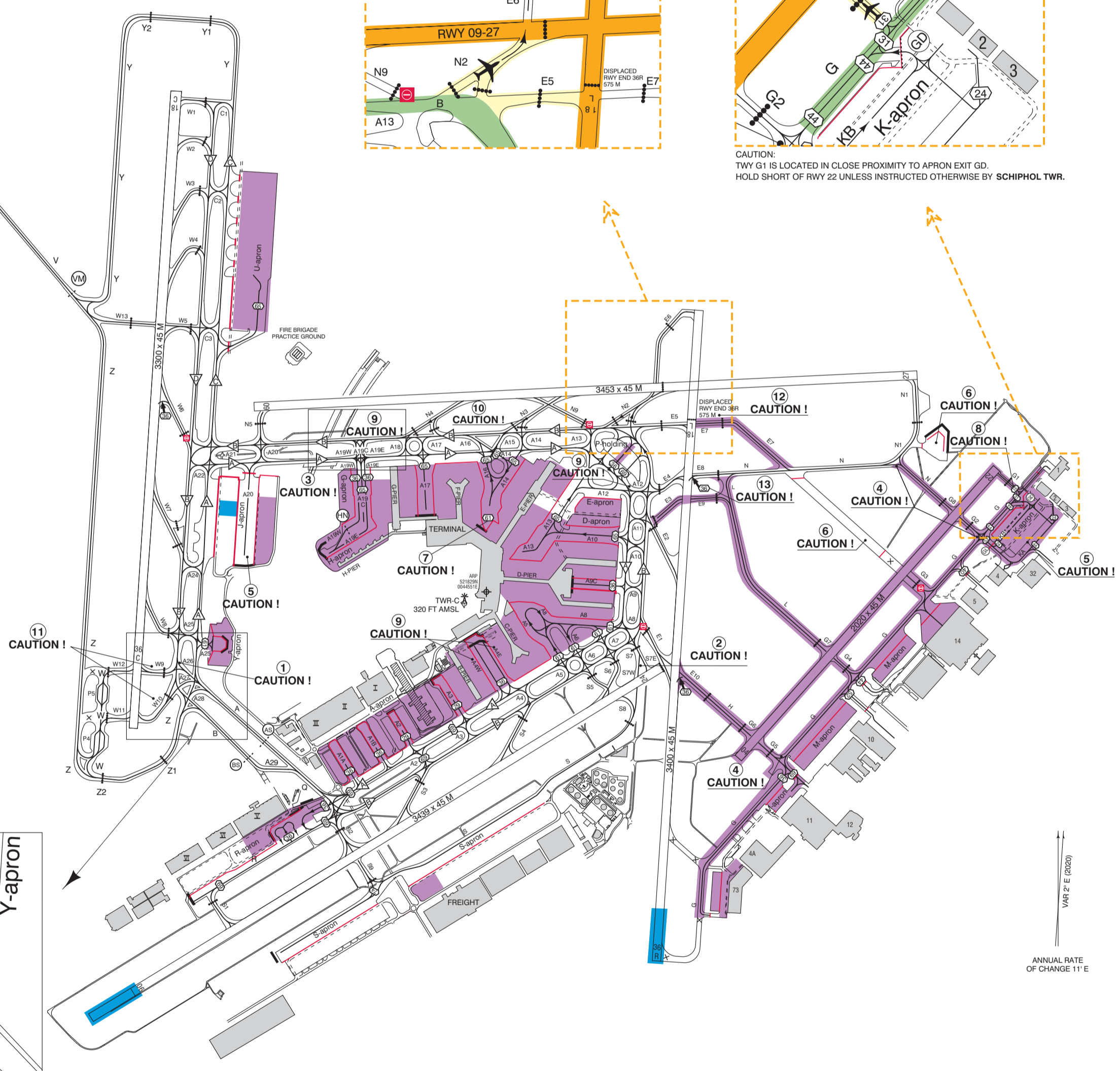
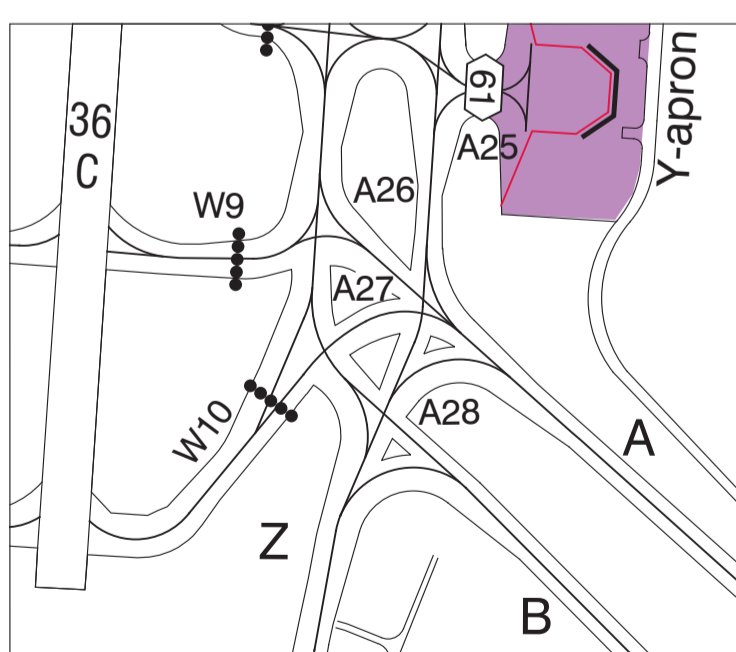
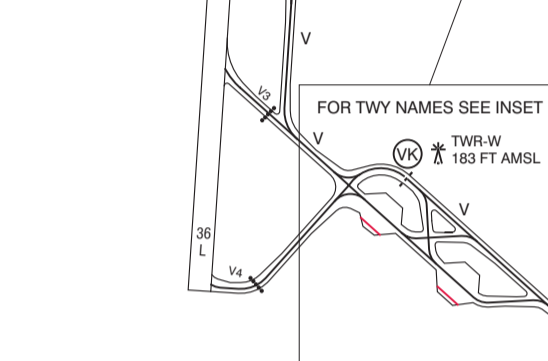
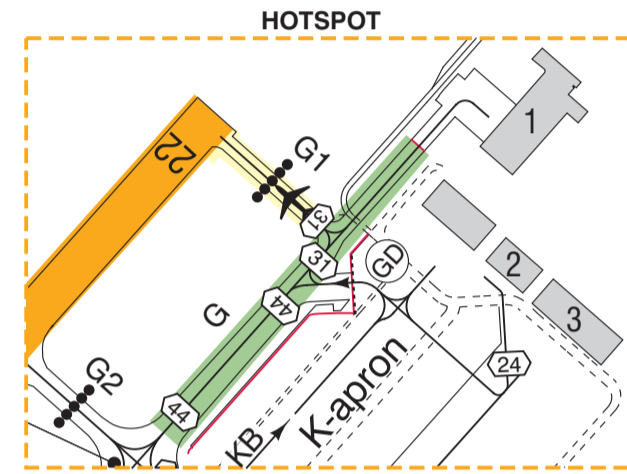
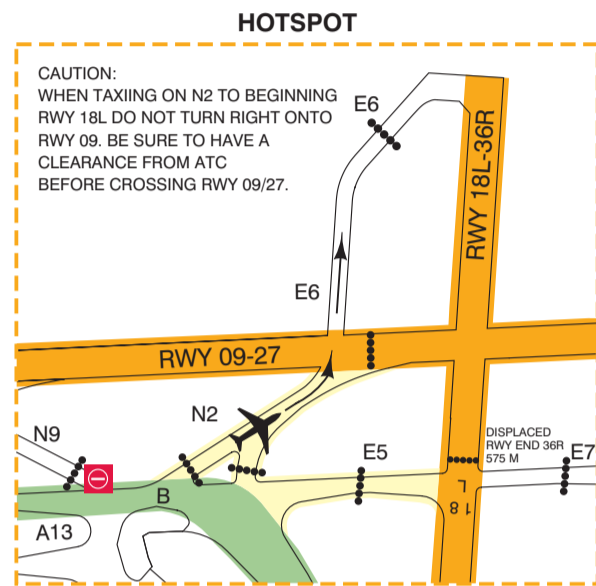
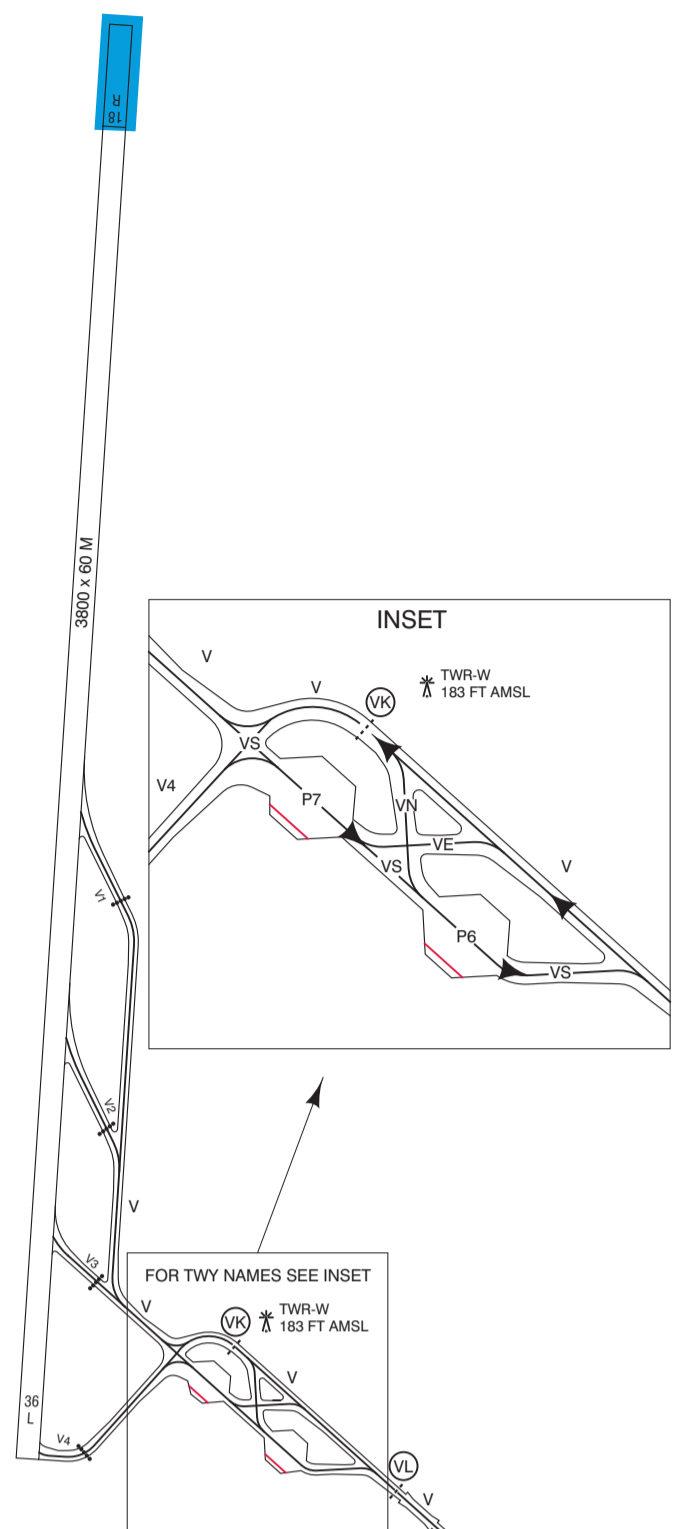
B747-8

Operational restrictions. For additional information see AD 2.23.

After landing contact Schiphol Ground:

RWY	CHANNEL
04/22	121.805
06/24	121.705
09/27	121.805
18C/36C	121.905
18R	121.560
36R	121.805

- Aircraft stands for parking the B747-8:**
- E18, E24
 - G9
 - J81
 - P10, P12, P14, P16
 - R72, R74, R77, R80
 - S64-S69, S77-S96



DIRECTIONS ARE MAGNETIC
ELEVATIONS IN FEET AMSL
DIMENSION IN METERS

General taxi instructions

RTF instruction inbound:
VIA NORTH: taxi via TWY A and north side of airport.
VIA SOUTH: taxi via TWY B and TWY Q.

RTF instruction outbound:
VIA NORTH: taxi via TWY B and north side of airport.
VIA SOUTH: taxi via TWY A and TWY Q.

CAUTION:

- Do not confuse RWY 36C with TWY B situated east of RWY 36C.
- TWY S7W designated for crossing RWY 06/24 only.
- Avoid holding on the upslope between A19 and A20 to prevent backward movement of the aircraft.
- Oversteering required for aircraft with wingspan >= 36 M.
- J-apron and K-apron is not controlled by ATC.
- Towing only.
- MAX wingspan 61 M only applicable to aircraft taxiing to E3.
- Vacating RWY 04 via TWY G1 is restricted to aircraft with a maximum wingspan of 31 M due to wingspan restriction on adjacent taxiways.
- Standard taxi routing, unless otherwise instructed by ATC, for ACFT docking at ACFT stands specified below:
ACFT stands B15 - B35: TWY A4W.
ACFT stands C6 - C14: TWY A4E.
ACFT stand E24: aircraft with wingspan greater than 65 M: TWY A12.
ACFT stands G3 - G9 and H1 - H7, aircraft with wingspan 36 M or less: from TWY A/B via TWY A19E (orange line).
ACFT stands G71 - G79, aircraft with wingspan 36 M or less: from TWY A/B via TWY A19W (blue line).
ACFT stands G3 - G9 and G73 - G79, aircraft with wingspan greater than 36 M: from TWY A/B via TWY A19C.
- To TWY A: diverge left on N3, enter TWY A14, turn left onto TWY A.
- After vacating RWY 18C via TWY W9 or TWY W10, taxiing is only possible in non-standard taxi routing either to TWY A southbound or TWY B northbound.
- Displaced runway end RWY 36R is indicated by red lights across the runway. Do not cross displaced runway end RWY 36R.
- TWY E8 MAX wingspan 36 M only applicable to aircraft vacating runway 36R or aircraft entering runway 18L.

SCALE 1 : 20 000

M 500 0 500
FT 1000 0 1000 2000

LEGEND

- No-entry: runway entry prohibited at this point.
- TWY E1 from TWY A, B and B.
- TWY G3 from TWY G.
- TWY W9 from TWY A and B.
- TWY W6 from TWY A, B and D.
- STOP BAR
- INTERMEDIATE HOLDING POSITION LIGHTED
- MAX WINGSPAN 29 M LIMITED ENTRY
- STANDARD TAXI ROUTING, UNLESS OTHERWISE INSTRUCTED BY ATC. ALL OTHER ROUTES MAY BE USED TWO-WAY ON ATC DISCRETION ONLY.
- ATC SERVICE BORY
- BLAST FENCE
- HANGAR NO. 12
- FREIGHT STATION NO. III
- SERVICE ROAD
- NOT IN USE

HOTSPOT

- RUNWAY
- ENTRY / EXIT
- TAXIWAY

CODE LETTER F ACFT

- PROHIBITED
- RESTRICTED