

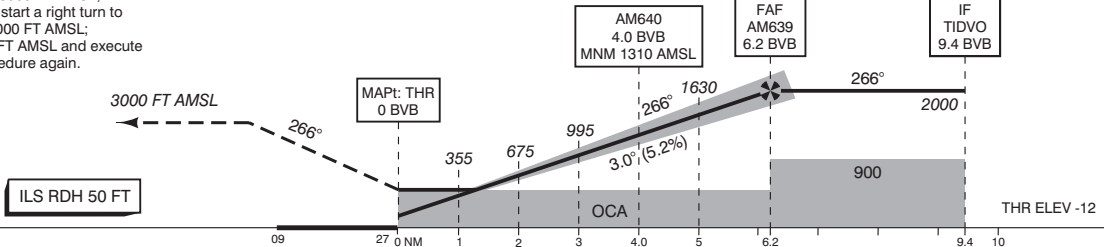
- NOTES:**
1. Navigation in the initial and intermediate approach segment is primarily based on radar vectors provided by ATC.
  2. Execution of the complete procedure overhead SPL VOR in case of COM failure.
  3. DME required.
  4. DME BVB reads ZERO at THR 27.
  5. Approaches on RWY 06, 18C, 18R, 36C or 36R may be executed simultaneously.
  6. Contact Schiphol Ground after vacating RWY.
  7. In case of COM failure, the Amsterdam ACC Supervisor may be reached on telephone number +3120 406 3999.

**WARNING!**  
When average surface wind velocity exceeds 30 KT, moderate turbulence can be expected on final approach from APRX 3.0 to 1.0 BVB.

APP	119.055	Schiphol Approach / Departure
	121.205	
	118.405	Schiphol Arrival
	126.680	
TWR	119.230	Schiphol Tower Primary
	118.105	
	135.110	
	121.805	Schiphol Ground Ground Control
	121.500	General Emergency
	243.000	
ATIS	132.980	Arrival Information
LOC	111.550	BVB
DME	CH52Y	BVB
GP	332.750	

1. Missed approach
  - Inform ATC immediately.
  - Track 266° MAG and climb to 3000 FT AMSL.
2. Missed approach in case of communication failure
  - Track 266° MAG and climb to 3000 FT AMSL;
  - When passing 2000 FT AMSL start a right turn to AM260 and cross AM260 at 3000 FT AMSL;
  - After AM260 descent to 2000 FT AMSL and execute the instrument approach procedure again.

TRANSITION LEVEL BY ATC  
TRANSITION ALTITUDE 3000 FT AMSL



DIST RELATED TO BVB DME	09	27 0 NM	1	2	3	4.0	5	6.2	9.4	10
GS IN KT	100	120	140	160	180	200	220			
VERTICAL SPEED	530 FT/MIN	635 FT/MIN	745 FT/MIN	850 FT/MIN	955 FT/MIN	1060 FT/MIN	1165 FT/MIN			

ACFT CAT		CAT III supported		LOC MAP: THR	CIRCLING**	* Circling procedures to and landing on RWY 18L and 36L is not permitted, except in case of an emergency. ** Caution: during circling to RWY 22 or RWY 24 identify correct RWY.	MSA BASED ON SPL VOR/DME
		CAT I	CAT II				
A	126 (138)	(50)		440 (450)	630 (641)	THR 27 521906.2N 0044748.8E AM260 522410.4N 0045111.9E AM261 522437.3N 0050458.5E AM262 522123.4N 0050514.9E AM639 521926.2N 0045750.4E AM640 521919.3N 0045419.3E	
B	133 (145)	(59)			790 (801)		
C	146 (158)	(73)			890 (901)		
D	159 (171)	(86)			900 (911)		
DL	162 (174)	(86)					
CEILING AND VISIBILITY MINIMA				DIRECTIONS ARE MAGNETIC DISTANCES IN NM ALTITUDES AND ELEVATIONS IN FEET AMSL			
TAKE-OFF	DAY:	NA	NIGHT:	NA			
LANDING	DAY:	NA	NIGHT:	NA			