

AD ELEV -11

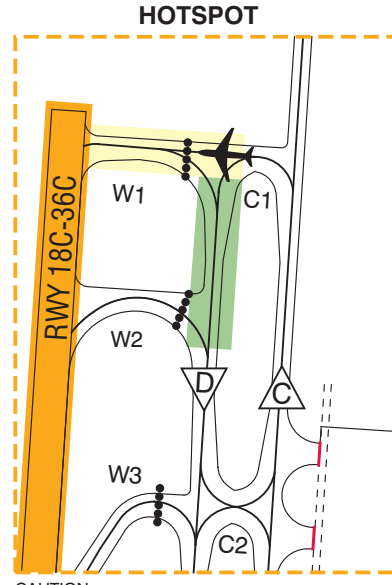
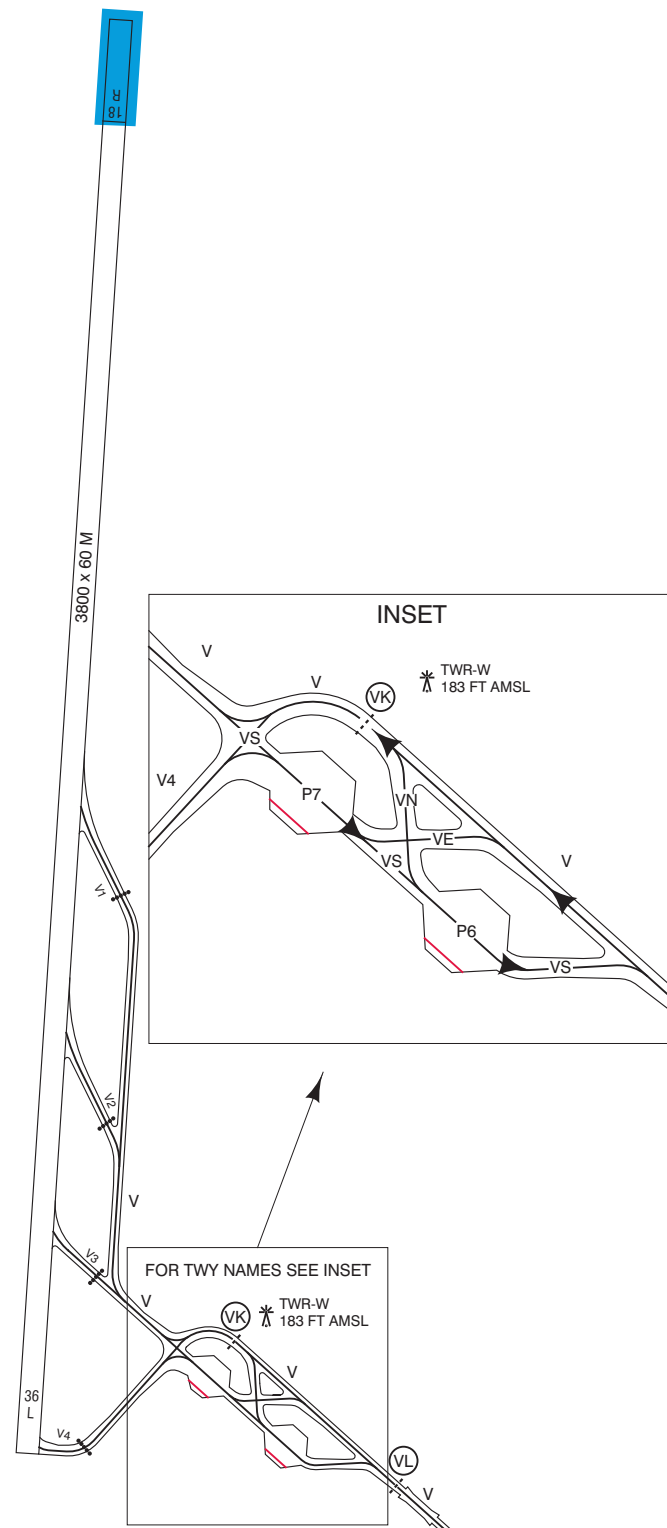
A380

**Operational restrictions.
For additional information
see AD 2.23.**

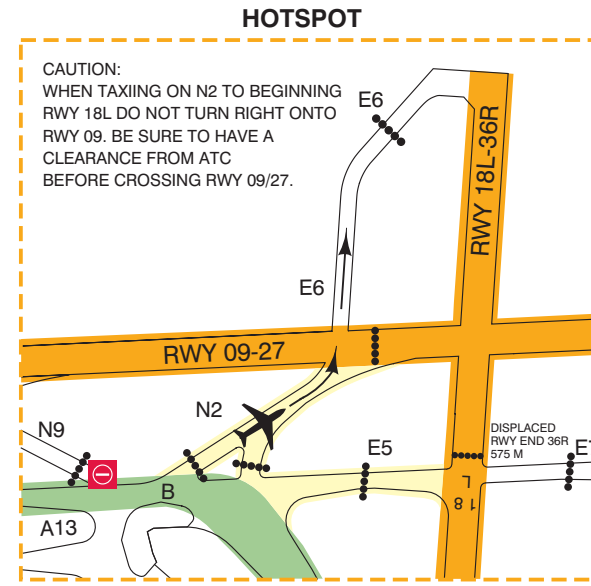
RWY	CHANNEL
04/22	121.805
06/24	121.705
09/27	121.805
18C/36C	121.905
18R	121.560
36R	121.805

Aircraft stands for parking the A380:

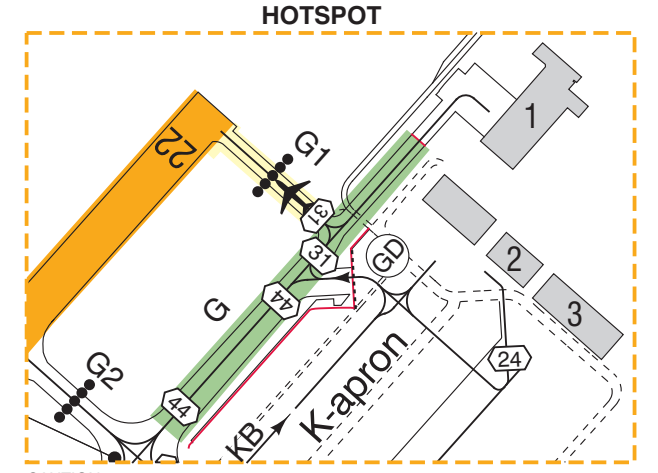
E18, E24
G9
J81
P10, P12, P14, P16



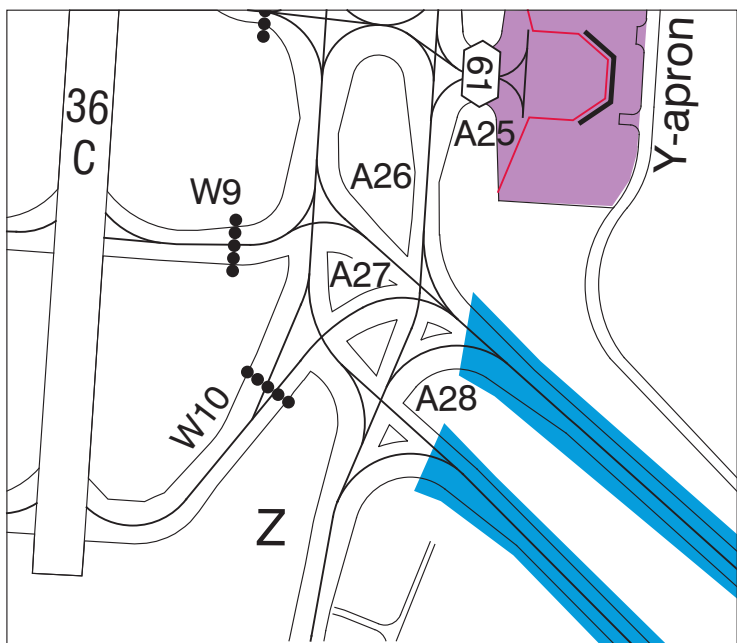
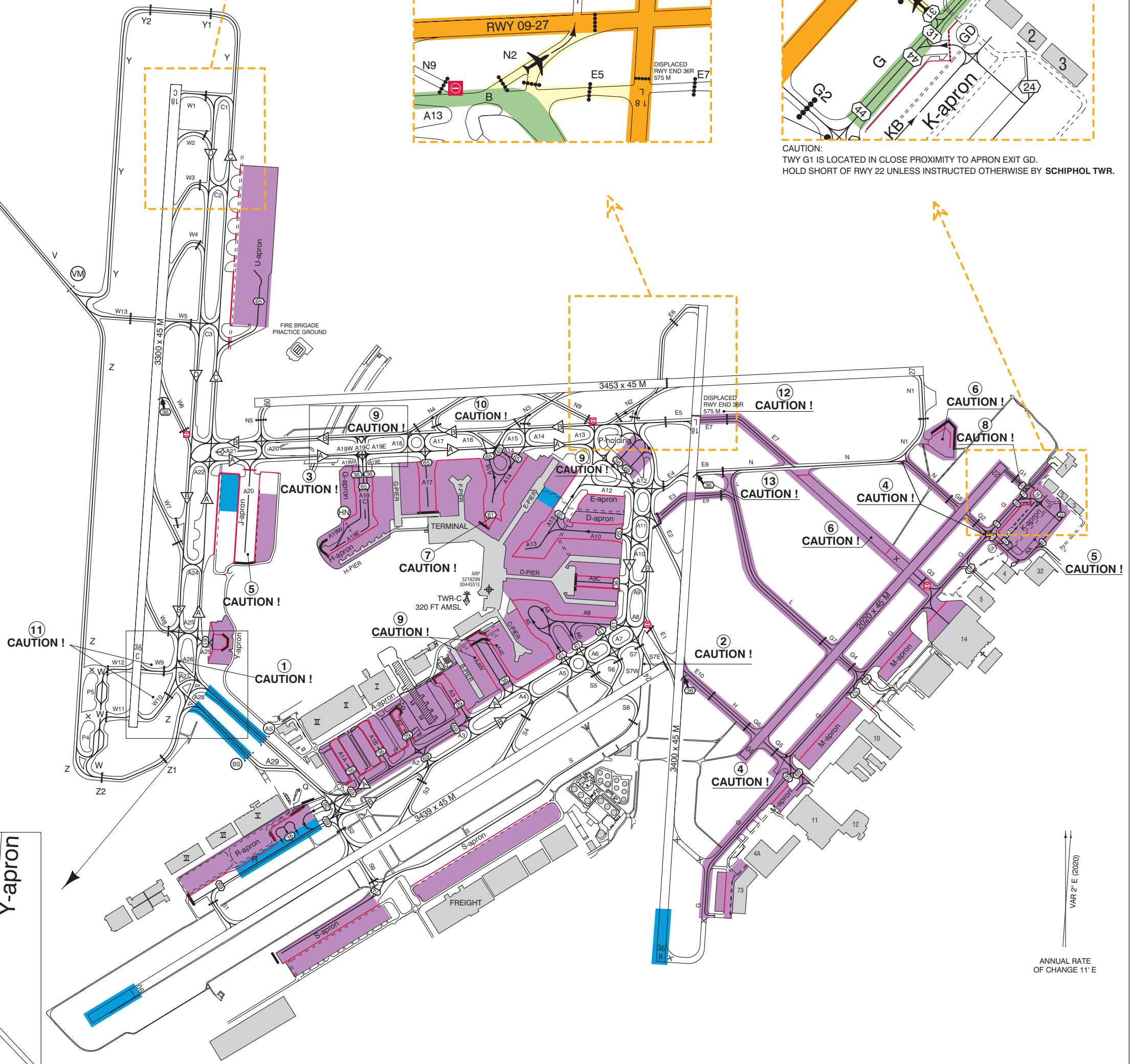
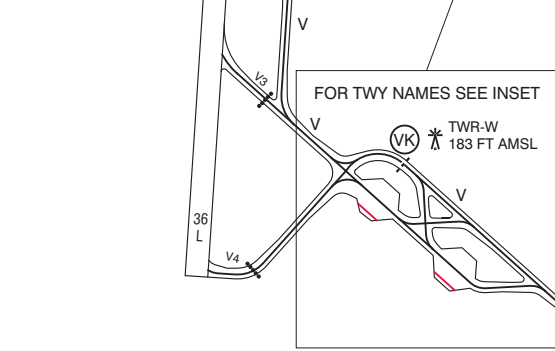
CAUTION:
DO NOT CONFUSE RWY 18C WITH TWY D SITUATED EAST OF RWY 18C.



CAUTION:
WHEN TAXIING ON N2 TO BEGINNING RWY 18L DO NOT TURN RIGHT ONTO RWY 09. BE SURE TO HAVE A CLEARANCE FROM ATC BEFORE CROSSING RWY 09/27.



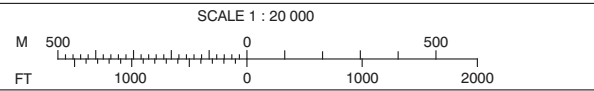
CAUTION:
TWY G1 IS LOCATED IN CLOSE PROXIMITY TO APRON EXIT GD. HOLD SHORT OF RWY 22 UNLESS INSTRUCTED OTHERWISE BY SCHIPHOL TWR.



DIRECTIONS ARE MAGNETIC
ELEVATIONS IN FEET AMSL
DIMENSION IN FEET

General taxi instructions
RTF instruction inbound:
VIA NORTH: taxi via TWY A and north side of airport.
VIA SOUTH: taxi via TWY B and TWY Q.
RTF instruction outbound:
VIA NORTH: taxi via TWY B and north side of airport.
VIA SOUTH: taxi via TWY A and TWY Q.

- CAUTION:**
- Do not confuse RWY 36C with TWY B situated east of RWY 36C.
 - TWY S7W designated for crossing RWY 06/24 only.
 - Avoid holding on the upslope between A19 and A20 to prevent backward movement of the aircraft.
 - Oversteering required for aircraft with wingspan >= 36 M.
 - J-apron and K-apron is not controlled by ATC.
 - Towing only.
 - MAX wingspan 61 M only applicable to aircraft taxiing to E3.
 - Vacating RWY 04 via TWY G1 is restricted to aircraft with a maximum wingspan of 31 M due to wingspan restriction on adjacent taxiways.
 - Standard taxi routing, unless otherwise instructed by ATC, for ACFT docking at ACFT stands specified below:
ACFT stands B15 - B35: TWY A4W.
ACFT stands C6 - C14: TWY A4E.
ACFT stand E24: aircraft with wingspan greater than 65 M: TWY A12.
ACFT stands G3 - G9 and H1 - H7, aircraft with wingspan 36 M or less: from TWY A/B via TWY A19E (orange line).
ACFT stands G71 - G79, aircraft with wingspan 36 M or less: from TWY A/B via TWY A19W (blue line).
ACFT stands G3 - G9 and G73 - G79, aircraft with wingspan greater than 36 M: from TWY A/B via TWY A19C.
 - To TWY A: diverge left on N3, enter TWY A14, turn left onto TWY A.
 - After vacating RWY 18C via TWY W9 or TWY W10, taxiing is only possible in non-standard taxi routing either to TWY A southbound or TWY B northbound.
 - Displaced runway end RWY 36R is indicated by red lights across the runway. Do not cross displaced runway end RWY 36R.
 - TWY E8 MAX wingspan 36 M only applicable to aircraft vacating runway 36R or aircraft entering runway 18L.



LEGEND

- No-entry: runway entry prohibited at this point.
- TWY E1 from TWY A, A8 and B.
- TWY G3 from TWY G.
- TWY W9 from TWY A and B.
- TWY W6 from TWY A, B and D.
- STOP BAR
- INTERMEDIATE HOLDING POSITION LIGHTED
- MAX WINGSPAN 29 M LIMITED ENTRY
- STANDARD TAXI ROUTING, UNLESS OTHERWISE INSTRUCTED BY ATC. ALL OTHER ROUTES MAY BE USED TWO-WAY ON ATC DISCRETION ONLY.
- ATC SERVICE BORY
- BLAST FENCE
- HANGAR NO. 12
- FREIGHT STATION NO. III
- SERVICE ROAD
- NOT IN USE

HOTSPOT

- RUNWAY
- ENTRY / EXIT
- TAXIWAY

CODE LETTER F ACFT

- PROHIBITED
- RESTRICTED