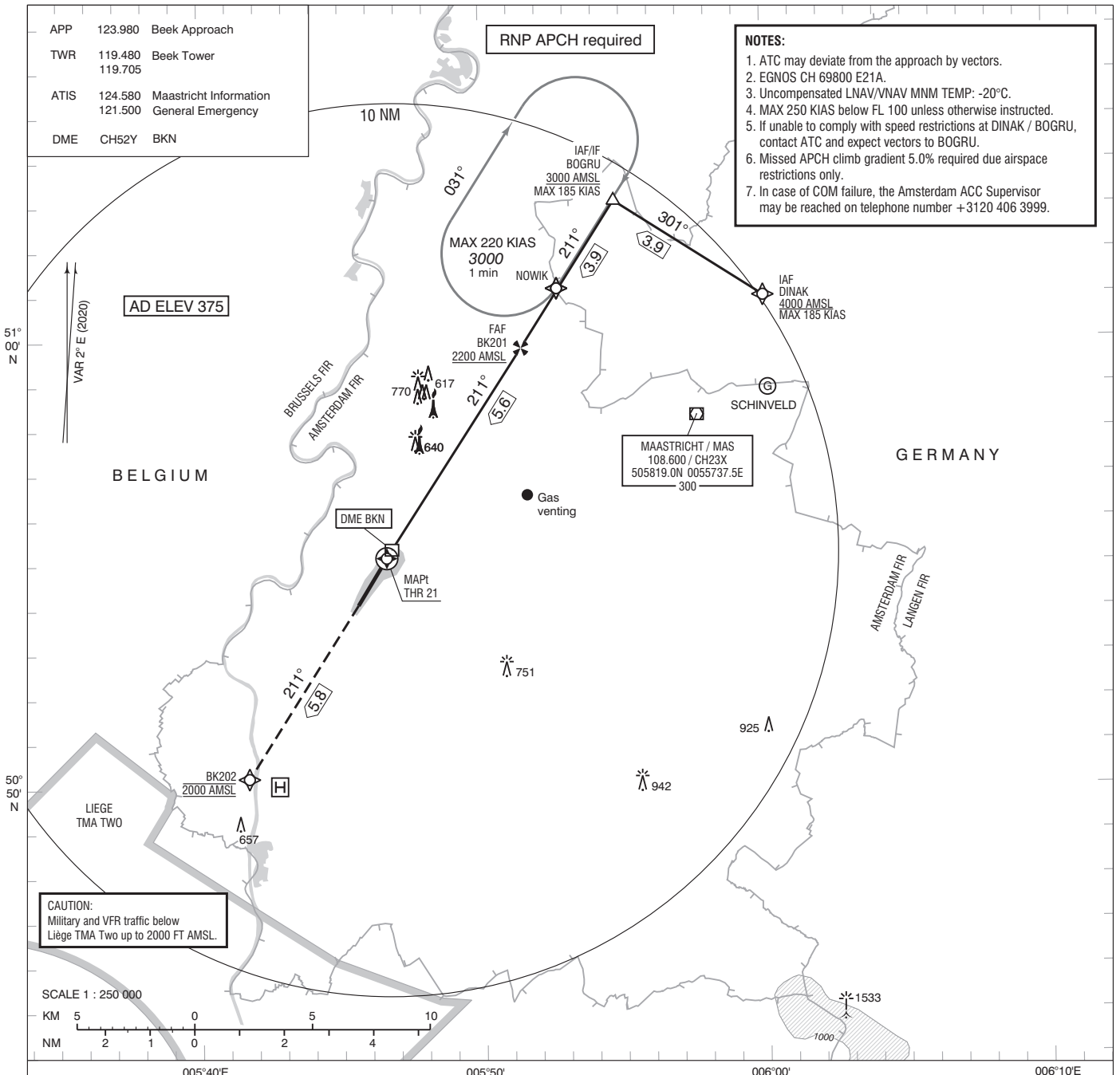


APP 123.900 Beek Approach
TWR 119.480 Beek Tower
119.705
ATIS 124.580 Maastricht Information
121.500 General Emergency
DME CH52Y BKN

RNP APCH required

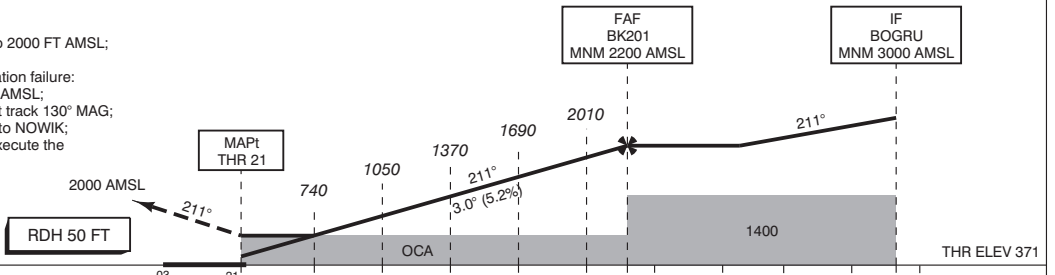
NOTES:
1. ATC may deviate from the approach by vectors.
2. EGNOS CH 69800 E21A.
3. Uncompensated LNAV/VNAV MNM TEMP: -20°C.
4. MAX 250 KIAS below FL 100 unless otherwise instructed.
5. If unable to comply with speed restrictions at DINAK / BOGRU, contact ATC and expect vectors to BOGRU.
6. Missed APCH climb gradient 5.0% required due airspace restrictions only.
7. In case of COM failure, the Amsterdam ACC Supervisor may be reached on telephone number +3120 406 3999.



CAUTION:
Military and VFR traffic below
Liège TMA Two up to 2000 FT AMSL.

TRANSITION LEVEL BY ATC
TRANSITION ALTITUDE 3000 FT AMSL

- Missed Approach:
 - Track 211° MAG to BK202 and climb to 2000 FT AMSL;
 - Inform ATC.
- Missed Approach in case of communication failure:
 - Track 211° MAG and climb to 3000 FT AMSL;
 - At 3.4 BKN beyond the runway turn left track 130° MAG;
 - When passing 2300 FT AMSL turn left to NOWIK;
 - Cross NOWIK at 3000 FT AMSL and execute the instrument approach procedure again.

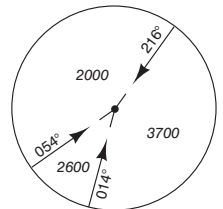


DIST RELATED TO THR 21	0.3	2.1	5.6	9.5	10		
GS IN KT	60	80	100	120	140	160	180
VERTICAL SPEED	320 FT/MIN	425 FT/MIN	530 FT/MIN	635 FT/MIN	745 FT/MIN	850 FT/MIN	955 FT/MIN

OCA (OCH) ELEV THR 21: 370.5 FT

ACFT CAT	LPV		LNAV / VNAV MNM TEMP: -20°C		LNAV		CIRCLING
	5.0%	2.5%	5.0%	2.5%	5.0%	2.5%	
A	607 (236)	1295 (924)	644 (273)	1308 (938)	820 (445)	1310 (929)	890 (520)
B	619 (248)	1301 (930)	655 (284)	1325 (954)			940 (570)
C	627 (256)	1304 (934)	662 (291)	1335 (965)	1170 (800)		1170 (800)
D	638 (267)	1310 (939)	671 (300)	1348 (978)			
DL	638 (267)	1310 (939)	671 (300)	1348 (978)			

MSA BASED ON MAS VOR/DME



CEILING AND VISIBILITY MINIMA			
TAKE-OFF	DAY:	NA	NIGHT: NA
LANDING	DAY:	NA	NIGHT: NA

DIRECTIONS ARE MAGNETIC
DISTANCES IN NM
ALTITUDES AND ELEVATIONS
IN FEET