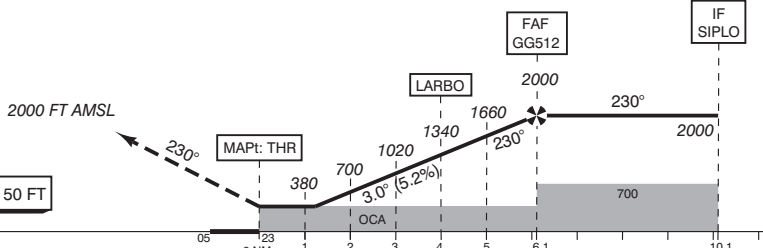


APP	120.305	Eelde Approach
TWR	118.705	Eelde Tower
	119.705	
ATIS	133.555	Eelde Information
	121.500	General Emergency
EGNOS	CH 52837	E23A

TRANSITION LEVEL BY ATC
TRANSITION ALTITUDE 3000 FT AMSL

ILS RDH 50 FT



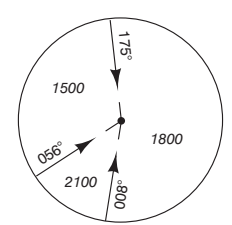
1. Missed Approach:
 - Track 230° MAG and climb to 2000 FT AMSL. Inform ATC.
2. Missed Approach in case of communication failure:
 - Track 230° MAG and climb to 3000 FT AMSL;
 - When reaching 3000 FT AMSL turn right to EEL;
 - After passing EEL proceed to HECTI via EEL 052;
 - After arriving over HECTI hold or descend to 2000 FT AMSL in an outbound turn, intercept final approach and execute the instrument approach procedure again.

GS IN KT	60	80	100	120	140	160	180
VERTICAL SPEED	320 FT/MIN	425 FT/MIN	530 FT/MIN	635 FT/MIN	745 FT/MIN	850 FT/MIN	955 FT/MIN

OCA (OCH) ELEV THR 23: 12.5 FT

ACFT CAT	LPV	LNAV/VNAV MNM TEMP -15°C	LNAV	CIRCLING*	THR 23	GG512	GG752
A	263 (251)	280 (268)	440 (422)	450 (432)	530729.8N	531114.8N	525946.2N
B	263 (251)	290 (278)		520 (502)	0063525.0E	0064322.6E	0061908.7E
C	263 (251)	300 (288)		620 (602)			
D	263 (251)	310 (298)		850 (832)			

MSA BASED ON EEL VOR/DME



CEILING AND VISIBILITY MINIMA				* Circling approaches shall be executed south-east of the AD, unless otherwise instructed by ATC.	DIRECTIONS ARE MAGNETIC DISTANCES IN NM ALTITUDES AND ELEVATIONS IN FEET
TAKE-OFF	DAY:	NA	NIGHT:		
LANDING	DAY:	NA	NIGHT:	NA	

CHANGE: obstacles added; MNM ALT; editorial.