

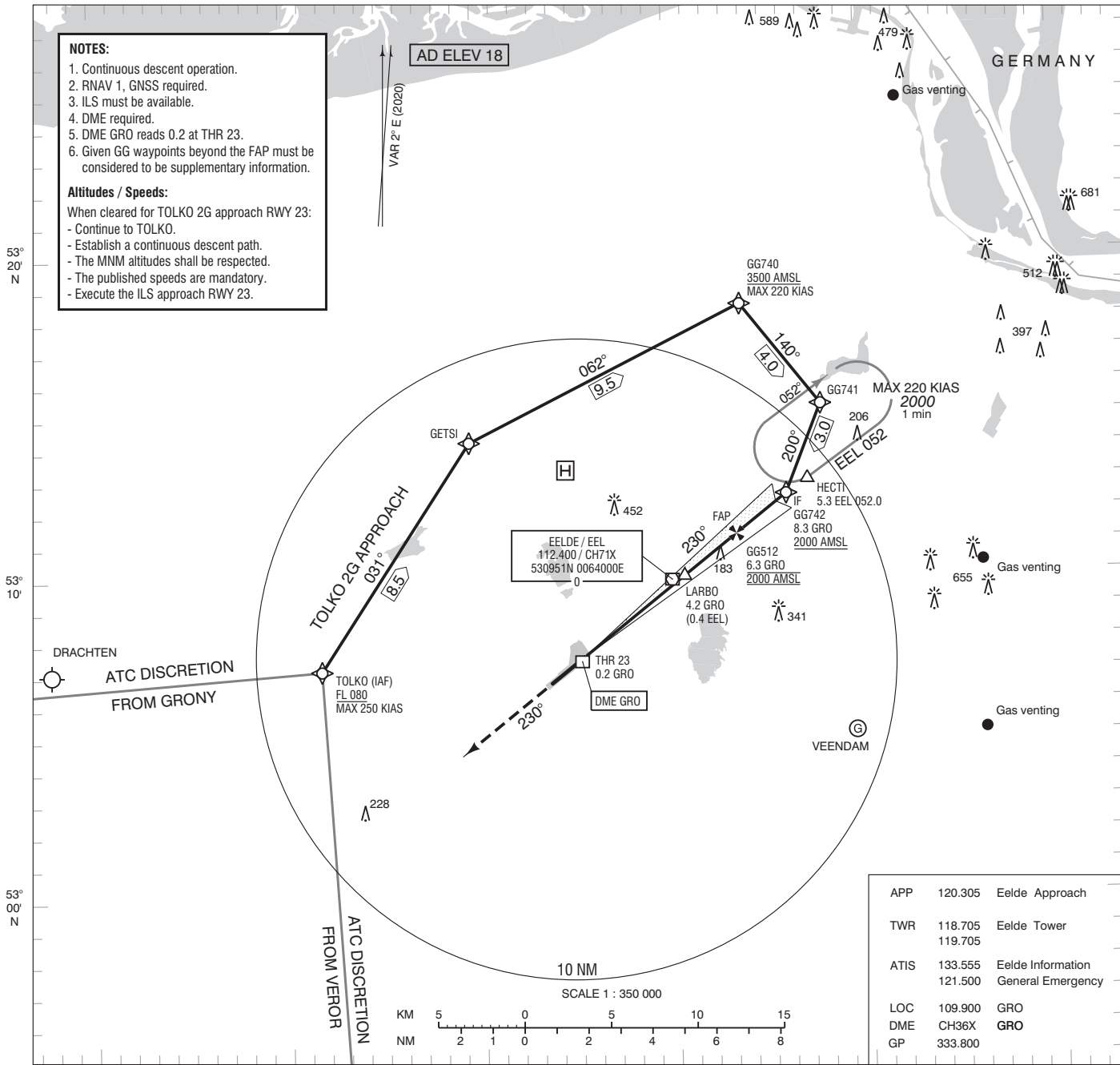
**NOTES:**

1. Continuous descent operation.
2. RNAV 1, GNSS required.
3. ILS must be available.
4. DME required.
5. DME GRO reads 0.2 at THR 23.
6. Given GG waypoints beyond the FAP must be considered to be supplementary information.

**Altitudes / Speeds:**

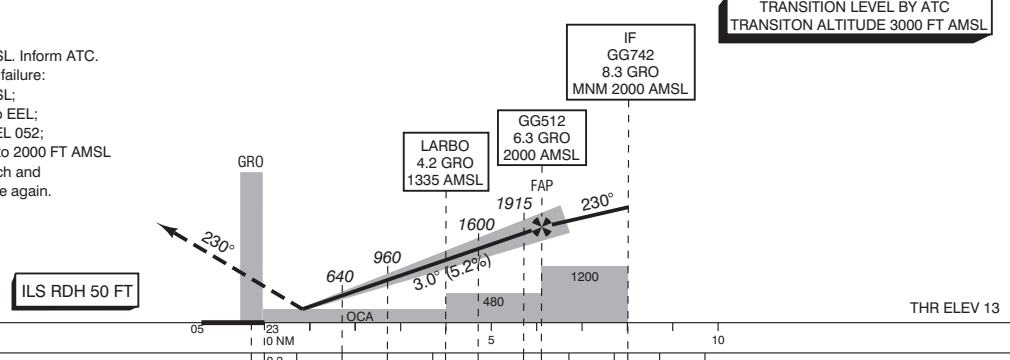
When cleared for TOLKO 2G approach RWY 23:

- Continue to TOLKO.
- Establish a continuous descent path.
- The MNM altitudes shall be respected.
- The published speeds are mandatory.
- Execute the ILS approach RWY 23.



APP	120.305	Eelde Approach
TWR	118.705 119.705	Eelde Tower
ATIS	133.555 121.500	Eelde Information General Emergency
LOC	109.900	GRO
DME	CH36X	GRO
GP	333.800	

1. Missed approach:
  - Track 230° MAG and climb to 2000 FT AMSL. Inform ATC.
2. Missed approach in case of communication failure:
  - Track 230° MAG and climb to 3000 FT AMSL;
  - When reaching 3000 FT AMSL turn right to EEL;
  - After passing EEL proceed to HECTI via EEL 052;
  - After arriving over HECTI hold or descend to 2000 FT AMSL in an outbound turn, intercept final approach and execute the instrument approach procedure again.

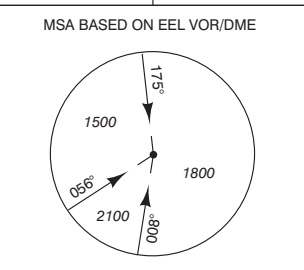


GS IN KT	60	80	100	120	140	160	180
VERTICAL SPEED	320 FT/MIN	425 FT/MIN	530 FT/MIN	635 FT/MIN	745 FT/MIN	850 FT/MIN	955 FT/MIN

OCA (OCH) ELEV THR 23: 12.5 FT			* Circling approaches shall be executed south-east of the AD, unless otherwise instructed by ATC.	THR 23 530729.8N 0063525.0E GG512 531114.8N 0064322.6E GG740 531824.0N 0064345.8E GG741 531515.2N 0064752.0E GG742 531228.6N 0064559.8E
ACFT CAT	CAT I	CIRCLING*		
A	161 (149)	450 (432)		
B	174 (162)	520 (502)		
C	184 (172)	620 (602)		

CEILING AND VISIBILITY MINIMA			
TAKE-OFF	DAY:	NA	NIGHT: NA
LANDING	DAY:	NA	NIGHT: NA

DIRECTIONS ARE MAGNETIC DISTANCES IN NM ALTITUDES AND ELEVATIONS IN FEET



CHANGE: obstacles added; MNM ALT; editorial.