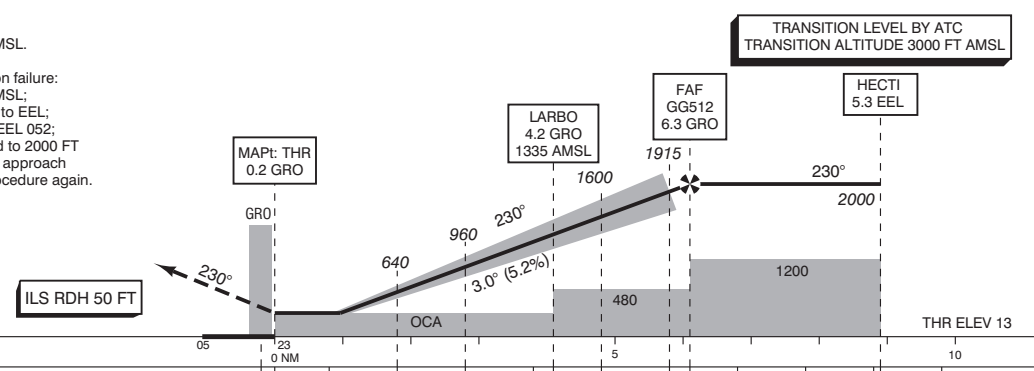


NOTES:
1. DME required.

APP	120.305	Eelde Approach
TWR	118.705 119.705	Eelde Tower
ATIS	133.555 121.500	Eelde Information General Emergency
LOC	109.900	GRO
DME	CH36X	GRO
GP	333.800	

- Missed Approach:
 - Track 230° MAG and climb to 2000 FT AMSL. Inform ATC.
- Missed Approach in case of communication failure:
 - Track 230° MAG and climb to 3000 FT AMSL;
 - When reaching 3000 FT AMSL, turn right to EEL;
 - After passing EEL proceed to HECTI via EEL 052;
 - After arriving over HECTI hold or descend to 2000 FT AMSL in an outbound turn, intercept final approach and execute the instrument approach procedure again.



DIST RELATED TO GRO DME		05	23	0	2	3	4.2	5	6	6.3	9.1	10
GS IN KT		60	80	100	120	140	160	180				
VERTICAL SPEED		320 FT/MIN	425 FT/MIN	530 FT/MIN	635 FT/MIN	745 FT/MIN	850 FT/MIN	955 FT/MIN				
OCA (OCH) ELEV THR 23: 12.5 FT										MSA BASED ON EEL VOR/DME		
ACFT CAT	CAT I	LOC MAPt: THR	CIRCLING*	* Circling approaches shall be executed south-east of the AD, unless otherwise instructed by ATC.		THR 23	530729.8N	0063525.0E				
A	161 (149)	460 (442)	450 (432)			GG512	531114.8N	0064322.6E				
B	174 (162)		520 (502)									
C	184 (172)		620 (602)									
D	197 (185)		850 (832)									
CEILING AND VISIBILITY MINIMA										DIRECTIONS ARE MAGNETIC DISTANCES IN NM ALTITUDES AND ELEVATIONS IN FEET		
TAKE-OFF	DAY:	NA	NIGHT:	NA								
LANDING	DAY:	NA	NIGHT:	NA								

